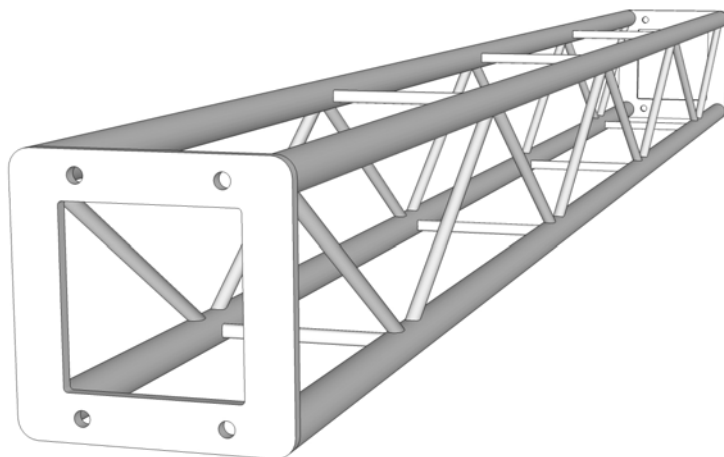


ALLOY TRUSS



CLS

CONCERT LIGHTING SYSTEMS AUSTRALIA



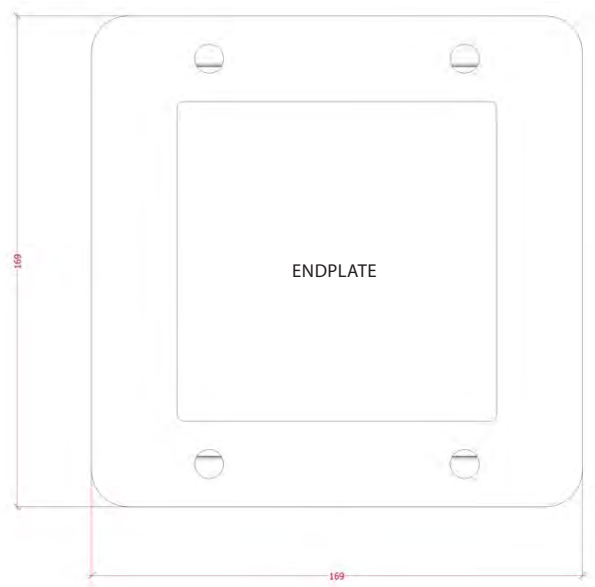
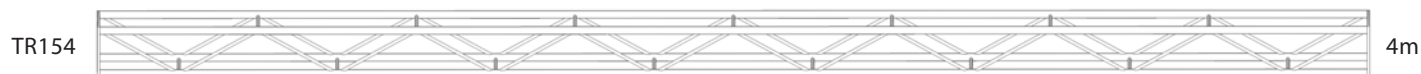
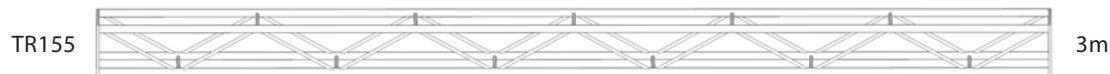
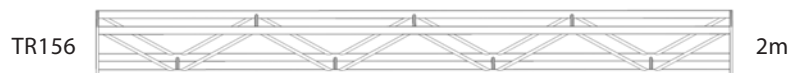
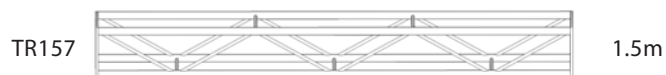
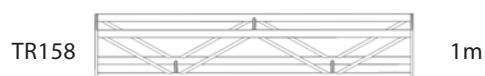
CLS BABY BOX-TRUSS

TR154 TR155 TR156 TR157 TR158 TR159

FEATURES:

CLS BABY BOX-TRUSS, WITH IT'S LOW-PROFILE SECTION OF 144mm CENTRES BETWEEN MAIN CHORDS OF Ø25mm - IS DESIGNED FOR ULTRA LIGHT DUTY APPLICATIONS WHERE AN INDUSTRIOUS LOOK IS DESIRED. EQUALLY SUITED FOR SHOPFRONTS OR ART GALLERIES, IT CARRIES ITS APPEARANCE WITHOUT BEING AS LARGE OR OBTRUSIVE AS IT'S 300mm COUSINS. LOOKS GREAT WITH SMALLER 'BIRDIE' PAR-CANS.

NOTE: • NOT RATED - DESIGNED TO CARRY LIGHT LOADS ONLY
E.G. SMALL SPEAKERS, SMALL PAR-CANS.



4x M10 BOLTS USED FOR JOINING.

CUSTOM SIZES (ACCURATE TO 1mm) AVAILABLE ON REQUEST.

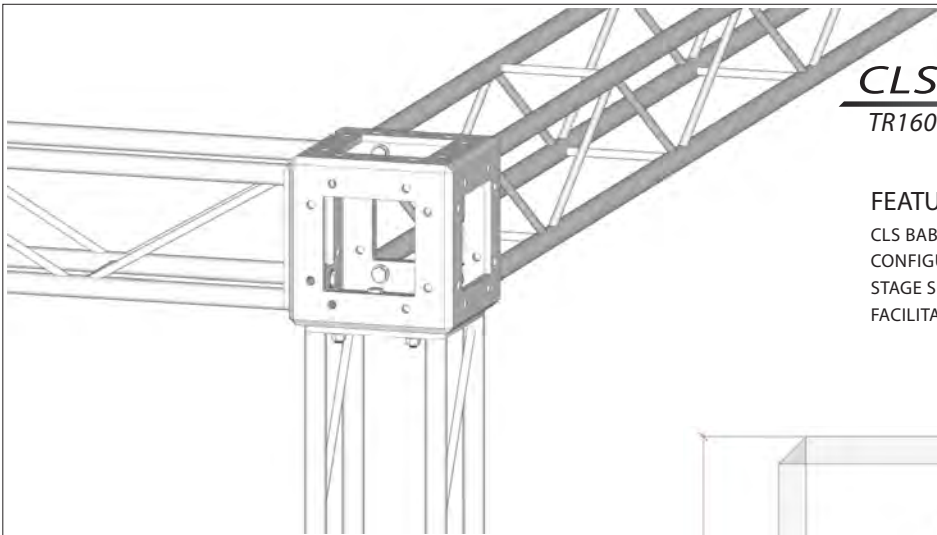
CUSTOM CIRCLES / ARCS OF ANY RADIUS AND ARC LENGTH, ALSO AVAILABLE ON REQUEST.
(ACCURATE TO 1mm / 1°)

CLS Australia P/L
1 Rogers Street
Port Melbourne VIC 3207
P: (03) 9646 8890 E: info@clsa.com.au

©2008 CLSA PTY. LTD.



CONCERT LIGHTING SYSTEMS AUSTRALIA

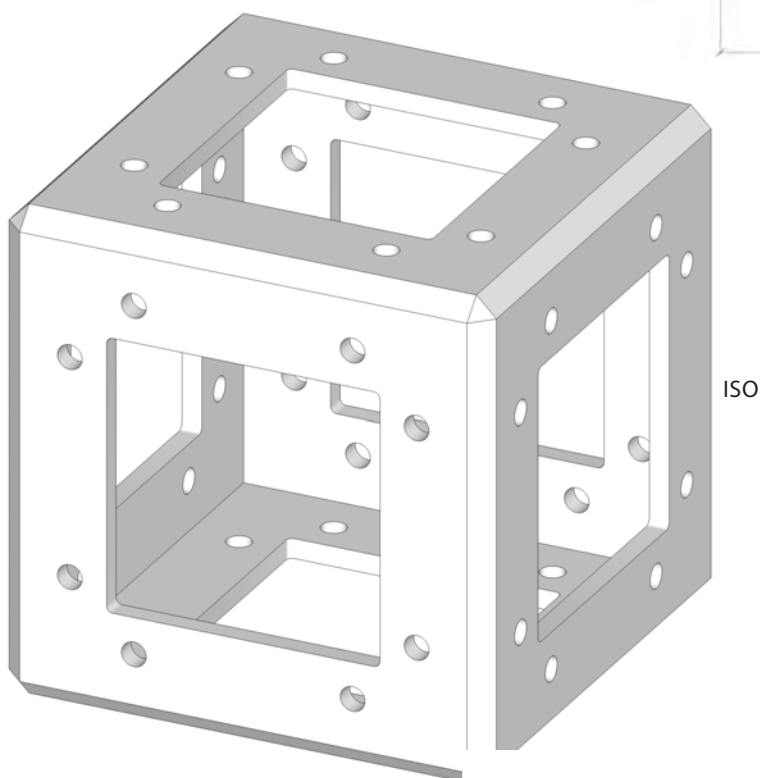
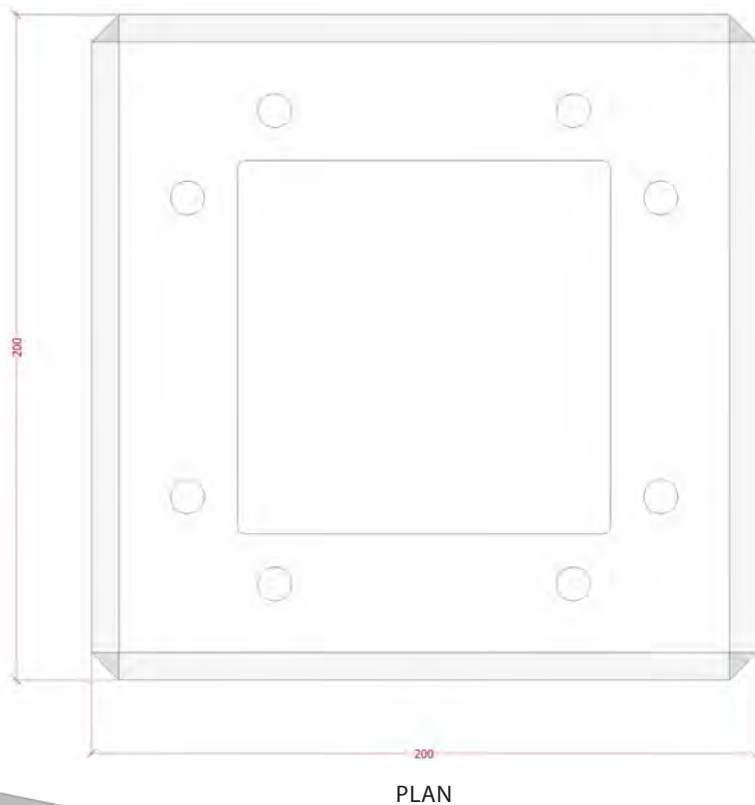


CLS BABY BOX-TRUSS CUBE

TR160

FEATURES:

CLS BABY BOX-TRUSS CUBES ALLOW DESIGNERS TO PRODUCE ELABORATE CONFIGURATIONS FOR SHOP-FRONTS OR EVEN CREATE A SCALED-DOWN STAGE SHOW LOOK. BOLT HOLES IN EACH ORIENTATION OF ITS FACES FACILITATE JOINING OF SYSTEMS IN SYMMETRY & CONSISTENCY.



CLS Australia P/L
1 Rogers Street
Port Melbourne VIC 3207
P: (03) 9646 8890 E: info@clsa.com.au

©2008 CLSA PTY. LTD.



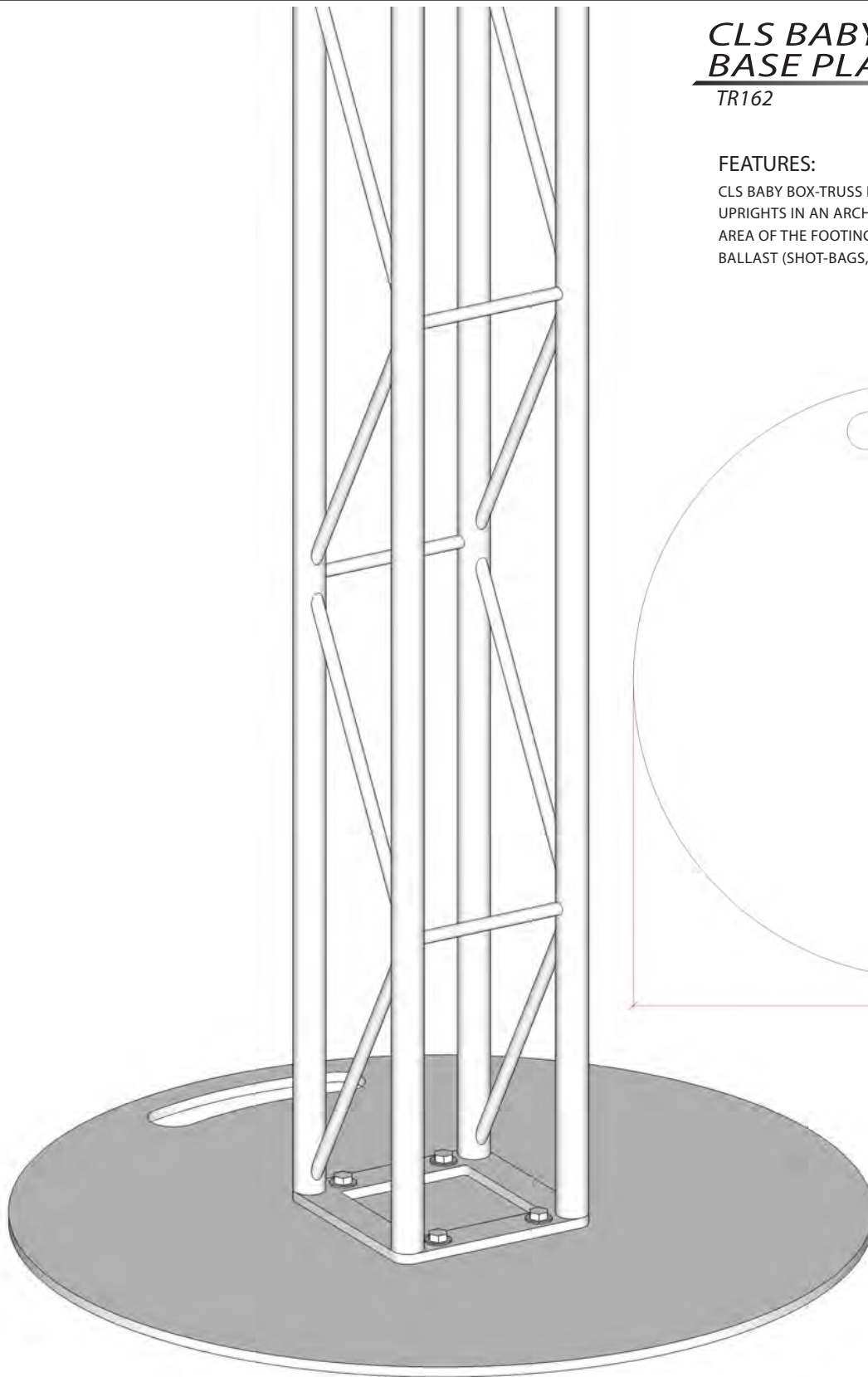
CONCERT LIGHTING SYSTEMS AUSTRALIA

CLS BABY BOX-TRUSS BASE PLATE

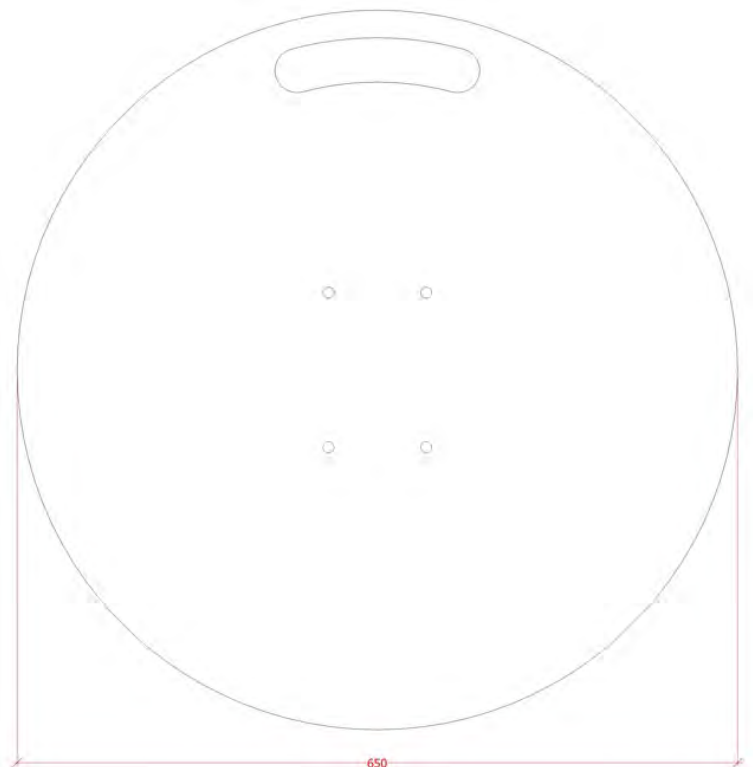
TR162

FEATURES:

CLS BABY BOX-TRUSS BASE PLATES FACILITATE GROUND SUPPORT OF UPRIGHTS IN AN ARCH, OR STANDALONE. THEY INCREASE THE OVERALL AREA OF THE FOOTING AND PROVIDE CONSIDERABLE AREA TO PLACE BALLAST (SHOT-BAGS, SANDBAGS, WATER-CONTAINERS ETC).



4x M10 THREADS TAPPED INTO MILD STEEL BASE.



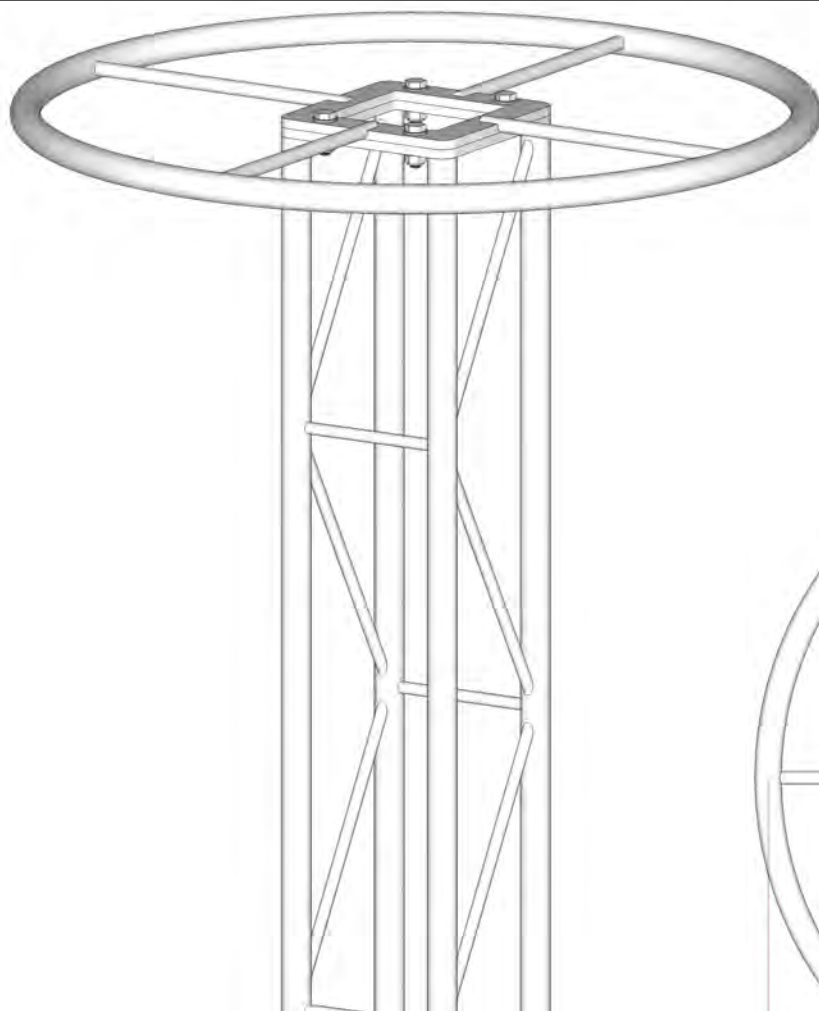
650
PLAN

CLS Australia P/L
1 Rogers Street
Port Melbourne VIC 3207
P: (03) 9646 8890 E: info@clsa.com.au

©2008 CLSA PTY. LTD.



CONCERT LIGHTING SYSTEMS AUSTRALIA

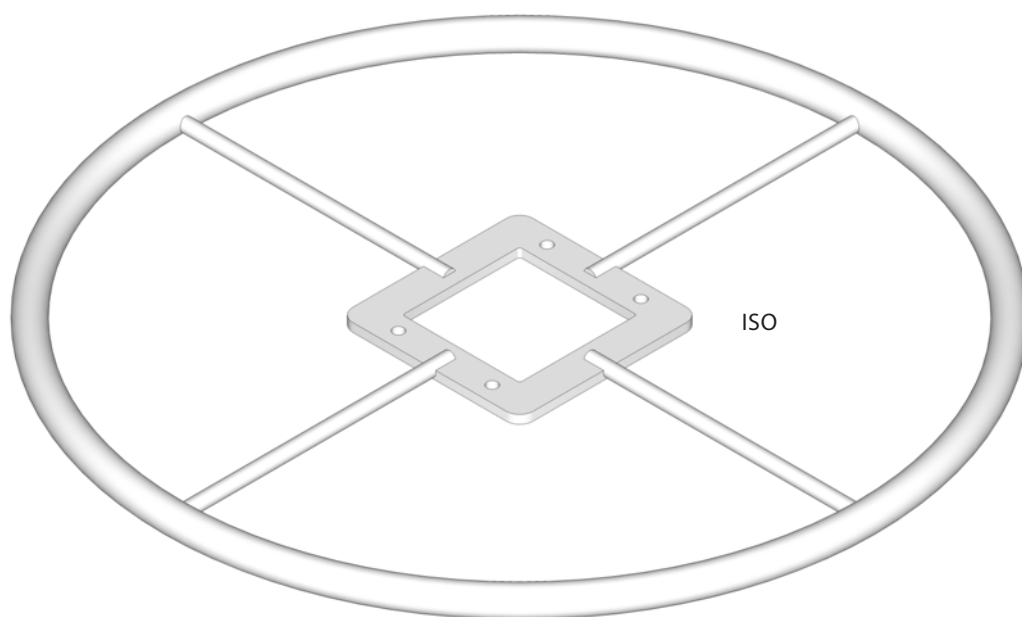
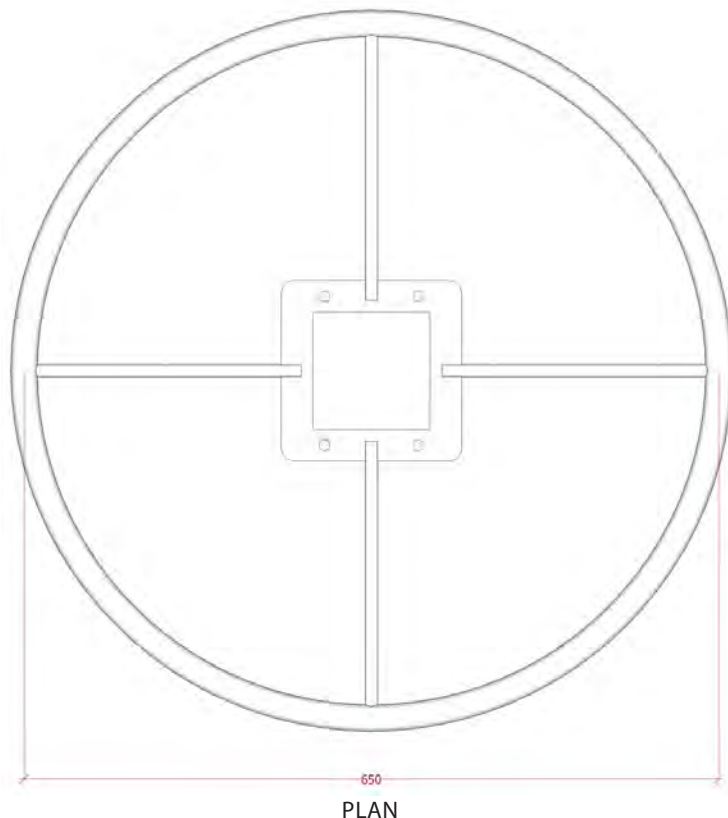


CLS BABY BOX-TRUSS LINTON RING

TR161

FEATURES:

CLS BABY BOX-TRUSS LINTON RINGS PROVIDE A SIMPLE AND EFFECTIVE MEANS OF SUPPORTING LIGHTING OR BANNERS AT EXHIBITIONS AND TRADESHOWS. WITH A 25mm MAIN RAIL, THE SAME CLAMPS MAY BE USED AS WOULD BE USED ON THE TRUSS ITSELF, PROVIDING A QUICK MEANS OF ENHANCING ANY DISPLAY.

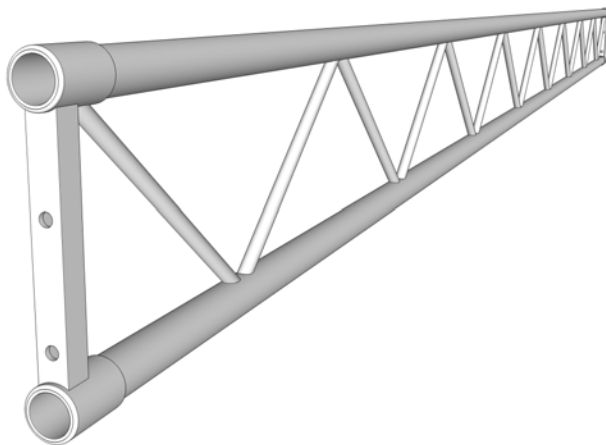


CLS Australia P/L
1 Rogers Street
Port Melbourne VIC 3207
P: (03) 9646 8890 E: info@clsa.com.au

©2008 CLSA PTY. LTD.



CONCERT LIGHTING SYSTEMS AUSTRALIA



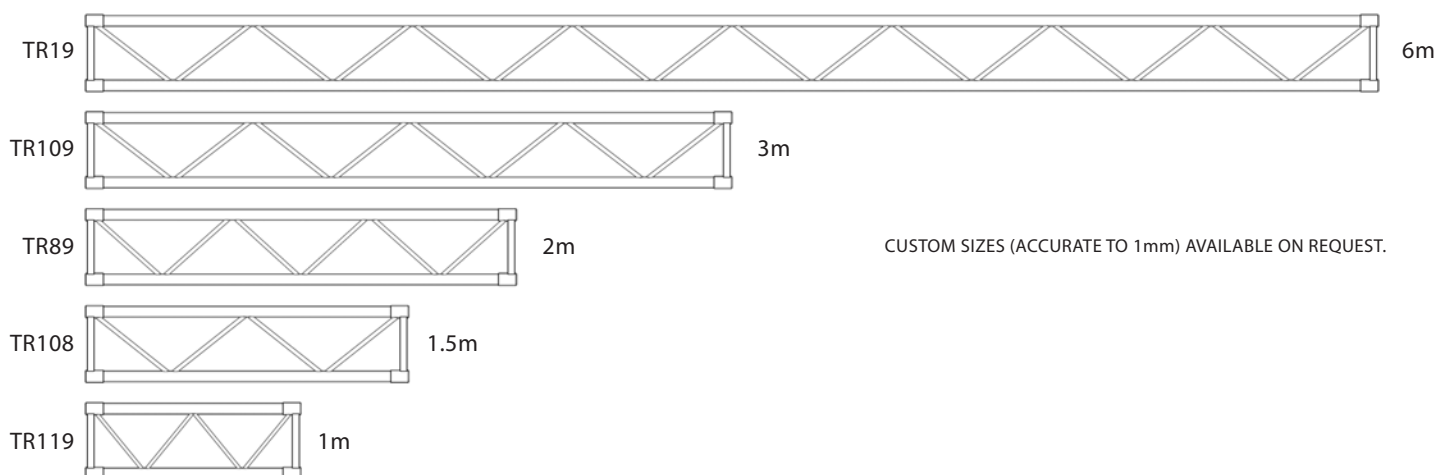
CLS LIGHT-DUTY FLAT-TRUSS

TR19 TR89 TR108 TR109 TR119

FEATURES:

CLS 300mm LIGHT-DUTY FLAT-TRUSS IS IDEAL FOR SIMPLE FIXTURES IN A LIGHTING GALLERY, DRAPE-SUPPORT, OR TO SUPPORT SIMPLE FIXTURES & SCENERY BETWEEN ELEMENTS OF LARGER RIGS.

NOTE: • FLAT-TRUSS IS ONLY STRUCTURAL WHEN KEPT AS CLOSE TO PERFECTLY VERTICAL AS PRACTICAL. IT MUST NOT BE USED HORIZONTALLY, OR HUNG FROM ANY FITTING THAT RENDERS IT OFF-AXIS. KEEP HEAVIER LOADS AS CLOSE AS POSSIBLE TO PICKUP-POINTS - THESE HELP KEEP THE TRUSS LEVEL AND RIGID. IF FLAT-TRUSS BEGINS TO BOW, DE-RIG IMMEDIATELY, AS IT BECOMES NO STRONGER THAN THE CHORD MATERIAL. RE-RIG ONCE IT HAS RETURNED TO ZERO-DEFLECTION.



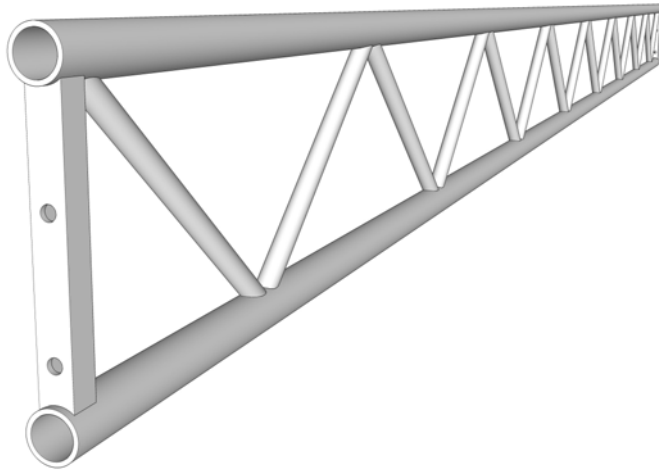
CUSTOM SIZES (ACCURATE TO 1mm) AVAILABLE ON REQUEST.

CLS Australia P/L
1 Rogers Street
Port Melbourne VIC 3207
P: (03) 9646 8890 E: info@clsa.com.au

©2008 CLSA PTY. LTD.



CONCERT LIGHTING SYSTEMS AUSTRALIA



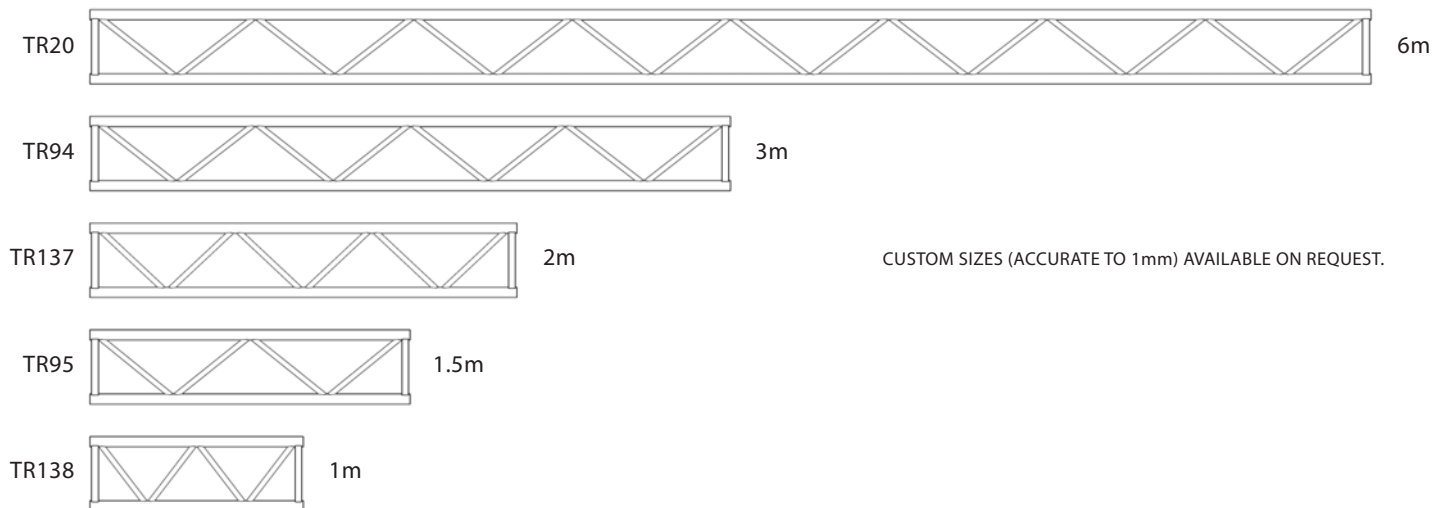
CLS HEAVY-DUTY FLAT-TRUSS

TR20 TR94 TR95 TR137 TR138

FEATURES:

CLS 300mm HEAVY-DUTY TRUSS IS DESIGNED FOR A COMBINATION OF SIMPLE FIXTURES AND BASIC MOVING FIXTURES (COLOUR-SCROLLERS ETC) IN A THEATRE CONTEXT. IT'S MADE FROM STRONGER SCAFFOLD-TUBE AND THE SAME WEBBING AS OUR 400 & 500mm BOX TRUSS PRODUCTS.

NOTE: • PICKUP NO MORE THAN EVERY FOUR METRES. SEE HANGING-BRACKETS PAGE FOR OPTIONS THAT BEST-GRIP THE TRUSS SAFELY FOR INSTALLATION AND ALSO MINIMISE LEAN AND SWINGING.
• FLAT-TRUSS IS ONLY STRUCTURAL WHEN KEPT AS CLOSE TO PERFECTLY VERTICAL AS PRACTICAL. IT MUST NOT BE USED HORIZONTALLY, OR HUNG FROM ANY FITTING THAT RENDERS IT OFF-AXIS. KEEP HEAVIER LOADS AS CLOSE AS POSSIBLE TO PICKUP-POINTS - THESE HELP KEEP THE TRUSS LEVEL AND RIGID. IF FLAT-TRUSS BEGINS TO BOW, DE-RIG IMMEDIATELY, AS IT BECOMES NO STRONGER THAN THE CHORD MATERIAL. RE-RIG ONLY ONCE IT HAS RETURNED TO ZERO-DEFLECTION.



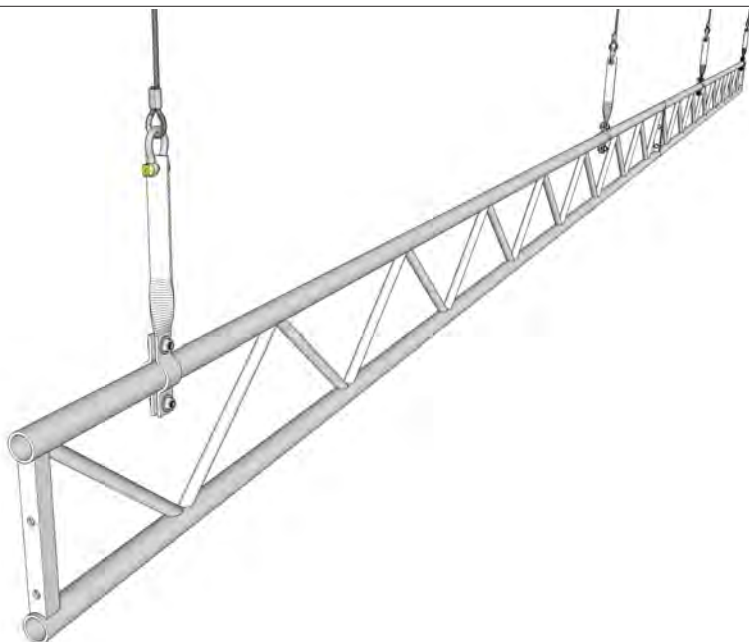
CUSTOM SIZES (ACCURATE TO 1mm) AVAILABLE ON REQUEST.

CLS Australia P/L
1 Rogers Street
Port Melbourne VIC 3207
P: (03) 9646 8890 E: info@clsa.com.au

©2008 CLSA PTY. LTD.



CONCERT LIGHTING SYSTEMS AUSTRALIA



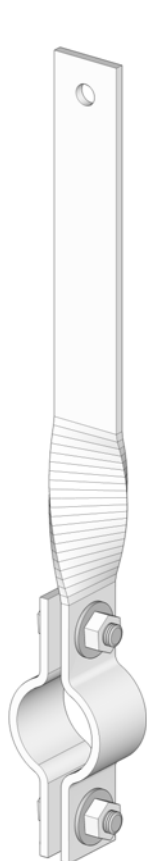
FLAT-TRUSS HANGING BRACKETS

CL11 CL20 CL30

FEATURES:

CLS FLAT-TRUSS HANGING BRACKETS ARE IN FACT A DOUBLE-USE OF OUR BOOM-ARM DESIGN. WITH TWO DIFFERENT SIZES AND TWO DIFFERENT DESIGNS - THEY OFFER A SIMPLE AND COST-EFFECTIVE MEANS OF FLYING FLAT-TRUSS IN YOUR VENUE OR INSTALLATION. THE LONGER DESIGN IS PARTICULARLY POPULAR AS IT RAISES THE CENTRE OF GRAVITY - REDUCING LEAN OR THE IMPACT MOVING FIXTURES HAVE ON LINES FLOWN IN THEATRES AND PERFORMANCE VENUES. MATERIAL IS 5mm MILD STEEL.

NOTE: • THE 90° TWIST ON CL11 MODEL CAN HELP AVOID THE TWIST THAT SHACKLES INTRODUCE WHEN THE FITTING SLIDES TOWARD ONE SIDE OF THE PIN. WITH THE SHACKLE PARALLEL TO THE BAR / TRUSS, ANY MOVEMENT IS LATERAL.



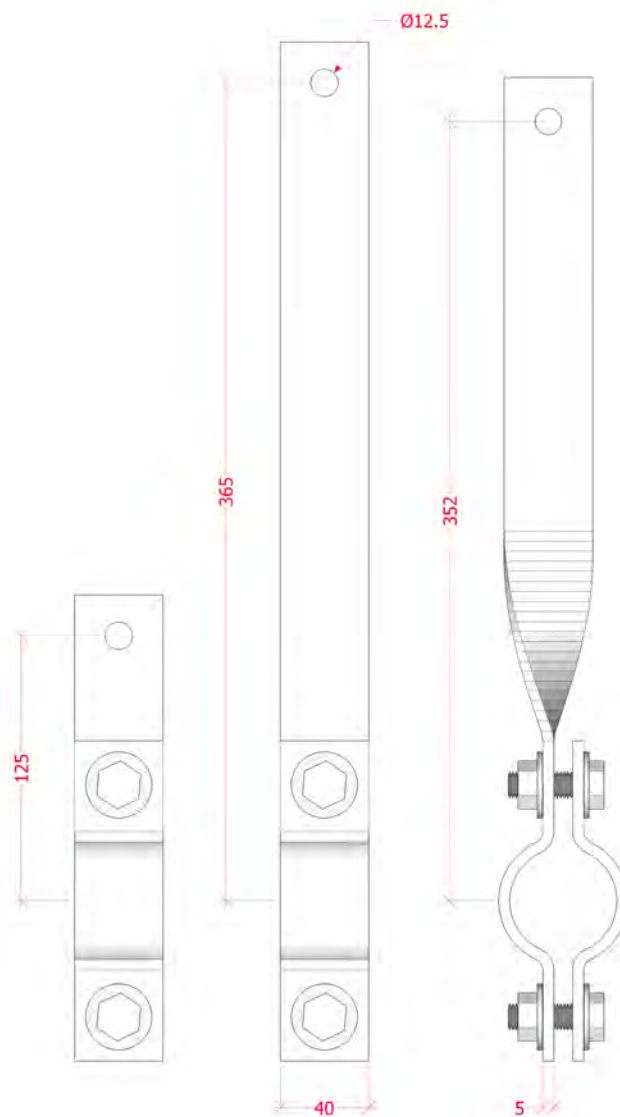
ISO - CL11



ISO - CL20



ISO - CL30



FRONT

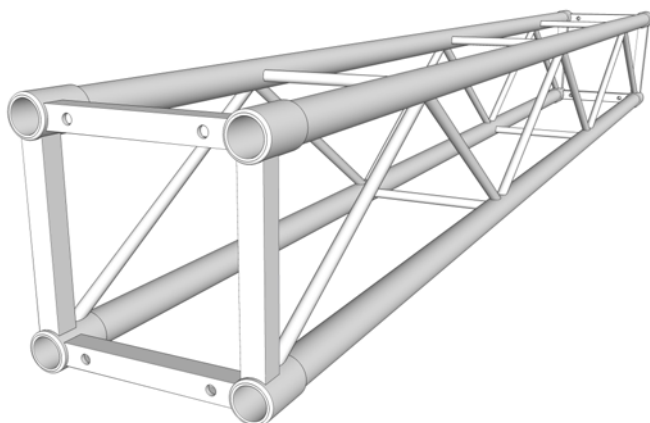
CLS Australia P/L
1 Rogers Street
Port Melbourne VIC 3207

P: (03) 9646 8890 E: info@clsa.com.au

©2008 CLSA PTY. LTD.



CONCERT LIGHTING SYSTEMS AUSTRALIA

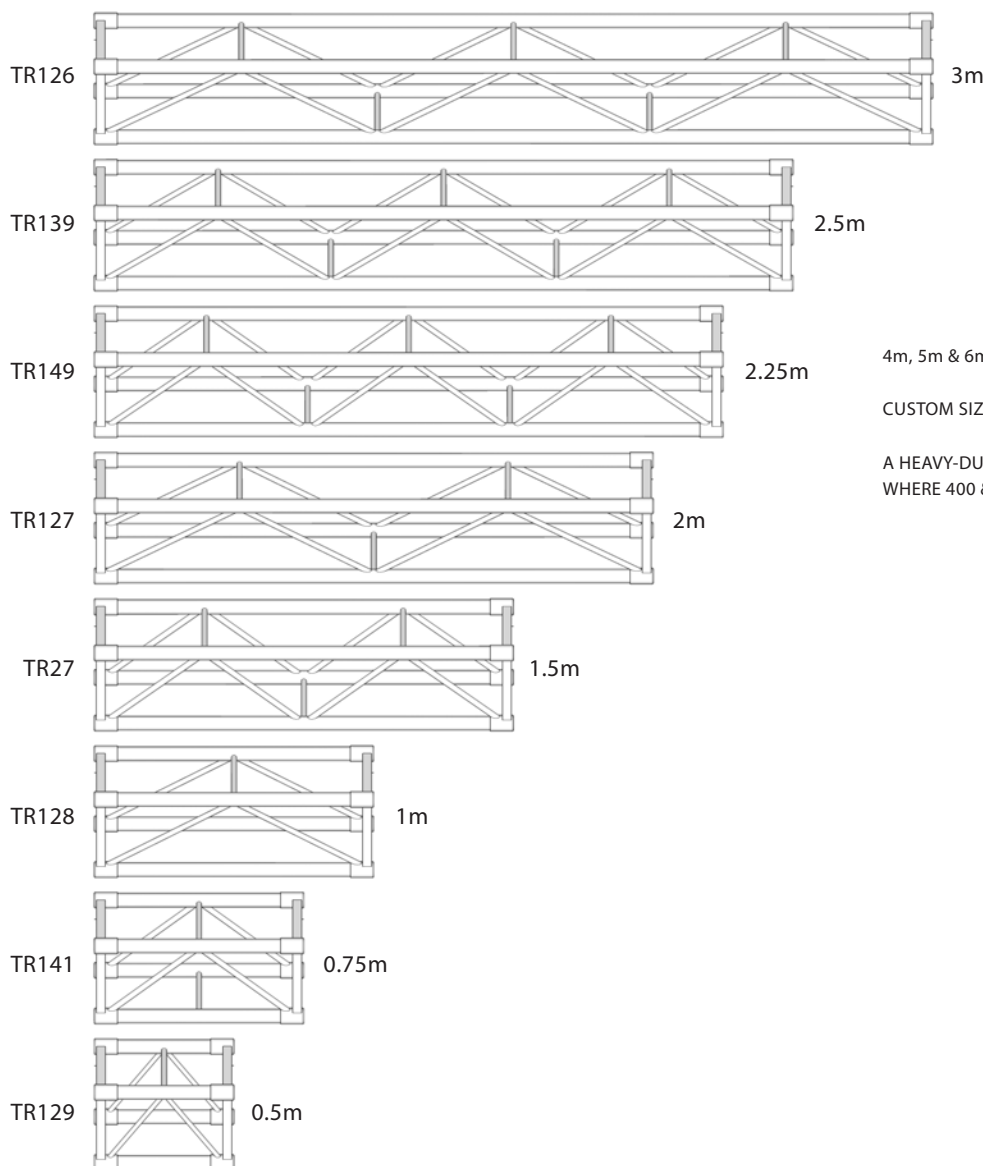


CLS BOX-TRUSS

TR27 TR125 TR126 TR127 TR128 TR129
TR139 TR141 TR149 TR187 TR188

FEATURES:

CLS 300mm BOX-TRUSS PRODUCTS ARE THE NATURAL PROGRESSION WHEN SOMETHING WITH A SIMILAR PROFILE TO TRI-TRUSS IS REQUIRED, BUT WITH THE ADDED STRENGTH & RIGIDITY OF BOX. CLS BOX-TRUSS ALLOWS THE HIRER TO COMFORTABLY HANG UP TO MEDIUM-SIZE MOVING FIXTURES REGULARLY OVER A 9 OR 12m SPAN. IT IS EQUALLY SUITED TO HANGING PROJECTORS AND SOUND REINFORCEMENT EQUIPMENT - OR EVEN SIGNAGE BACK-TO-BACK FOR EXHIBITIONS & TRADESHOWS. OUR RANGE OF SUPPORT ACCESSORIES INCLUDE A SUSPENSION BRACKET THAT RAISES THE CENTRE OF GRAVITY - FACILITATING THE LOADING OF ADJACENT CHORDS SEPARATELY.



4m, 5m & 6m ALSO AVAILABLE (FOR SALE ONLY) - SEE SALES PRICE-LIST.

CUSTOM SIZES (ACCURATE TO 1mm) AVAILABLE ON REQUEST.

A HEAVY-DUTY DESIGN IS ALSO AVAILABLE FOR SPECIAL APPLICATIONS WHERE 400 & 500mm BOX IS IMPRACTICAL - SEE SALES PRICE-LIST.

SPAN (METRES)	MAXIMUM POINT LOAD (Kg)	MAXIMUM UNIFORMLY DISTRIBUTED LOAD (Kg/m)
3	695	463
6	332	110
9	204	45
12	134	22

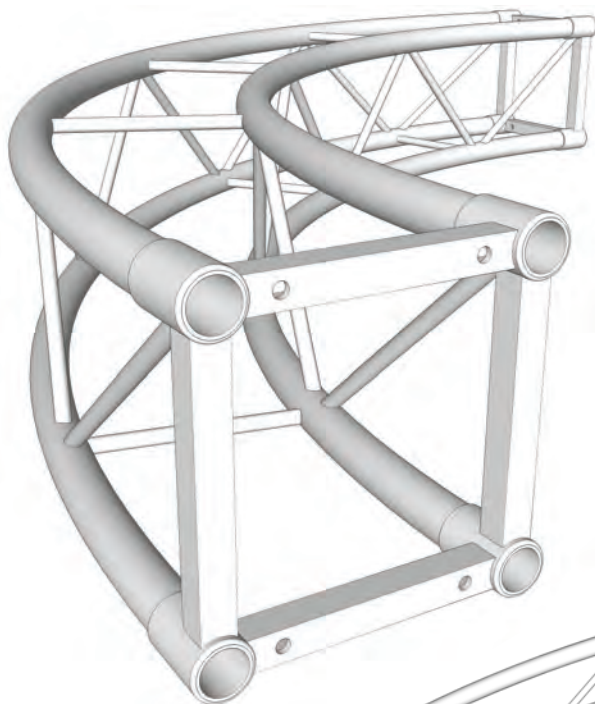
NOTE: • RATINGS VALID ONLY INDOORS
E.G. RATINGS DO NOT APPLY IN WIND
• ABOVE RATINGS IN ADDITION TO
NET WEIGHT OF SPAN (BASED ON
3M SECTIONS)

CLS Australia P/L
1 Rogers Street
Port Melbourne VIC 3207
P: (03) 9646 8890 E: info@clsa.com.au

©2008 CLSA PTY. LTD.



CONCERT LIGHTING SYSTEMS AUSTRALIA



CLS BOX-TRUSS CIRCLES

CT10 CT11 CT12 CT13

FEATURES:

CLS BOX-TRUSS CIRCLES OFFER AN ATTRACTIVE SOLUTION FOR LIGHTING / SCENERY SUPPORT AT SHOWPIECE EVENTS. MODERN MOVING LIGHTS BENEFIT FROM THE CIRCULAR FORMATION AND A TAUT SCRIM CAN BE RIGGED INSIDE THE CIRCLE TO CREATE A PROJECTION SURFACE - PARTICULARLY PRACTICAL FOR THE RANGE OF MOVING PROJECTOR FIXTURES NOW ON THE MARKET. CLS BOX-TRUSS CIRCLES BENEFIT FROM THE ADDED RIGIDITY THAT BOX TRUSS PROVIDES, AND ALLOW FOR THE FITTING OF LARGE PROJECTORS AND MOVING FIXTURES THAT RELY ON TWO POINT SUPPORT. ALTERNATIVELY A SEAMLESS ROUND BANNER CAN BE HUNG TAUT BETWEEN TWO CONCENTRIC CIRCLES AND LIT OR PROJECTED UPON FROM INSIDE - CREATING A DRAMATIC FEATURE FOR EXHIBITIONS & TRADESHOWS.

3m (Ø6m)

2m (Ø4m)

1.5m (Ø3m)

1m (Ø2m)

CT10

CT11

CT12

CT13

ALL STANDARD BOX CIRCLES COMPRISE FOUR 90° ARCS.

7.5m RADIUS AVAILABLE FOR HIRE (30° ARC - 12 PART CIRCLE).

CUSTOM RADII & ARCS (ACCURATE TO 1mm / 1°) AVAILABLE ON REQUEST.

NOTE: - CORRECT RIGGING OF CIRCLES AND ARCS MUST BE ASSESSED ON A PER-JOB BASIS. A MINIMUM FOUR POINTS MUST BE USED ON CIRCLES 2m RADIUS OR OVER. LARGER CIRCLES ARE BEST HUNG IN A BRIDLE TYPE CONFIGURATION (e.g. FOUR HOISTS CAN PICKUP A CIRCLE FROM EIGHT POINTS). ANGLE INSIDE BRIDLE-LEGS MUST NOT EXCEED 120° AND WHEN USED, SLING RATING IS HALVED. ENSURE PICKUP FROM BOTH TOP CHORDS OF TRUSS ADJACENT OR THROUGH NEAREST WEBS.

©2008 CLSA PTY. LTD.

CLS Australia P/L
1 Rogers Street

Port Melbourne VIC 3207

P: (03) 9646 8890 E: info@clsa.com.au

CONCERT LIGHTING SYSTEMS AUSTRALIA

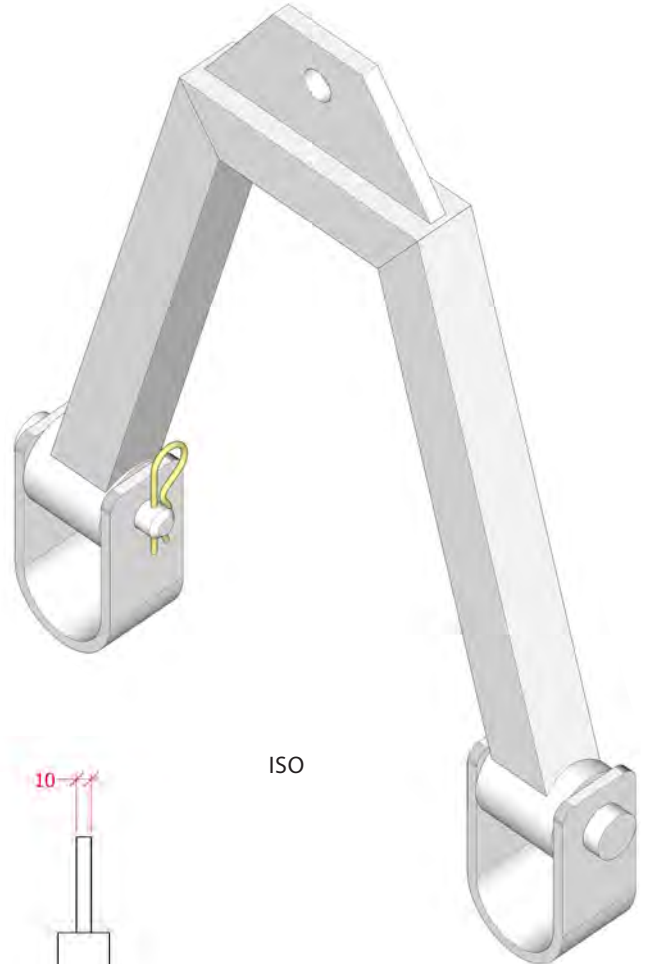
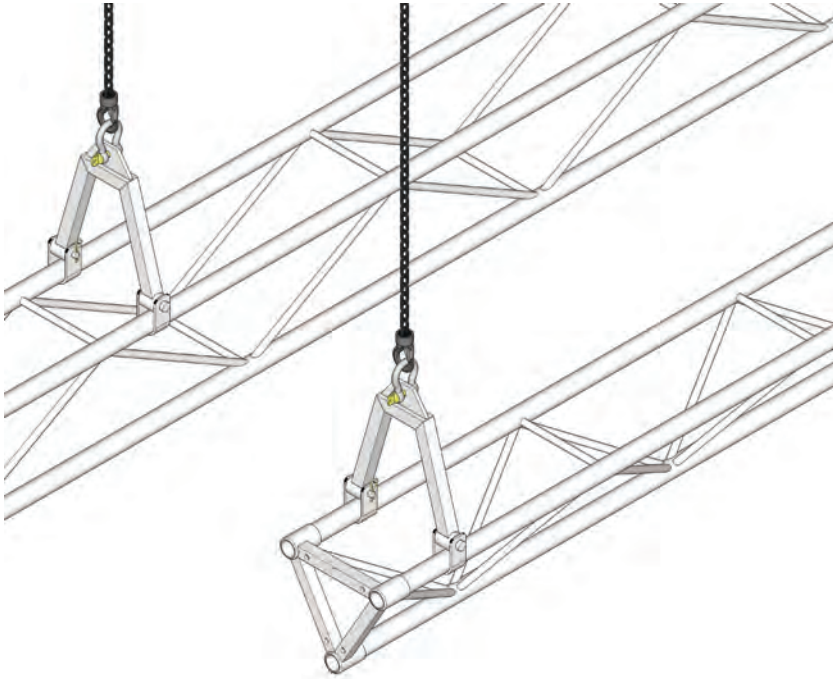


CLS 300mm UNIVERSAL SUSPENSION BRACKET

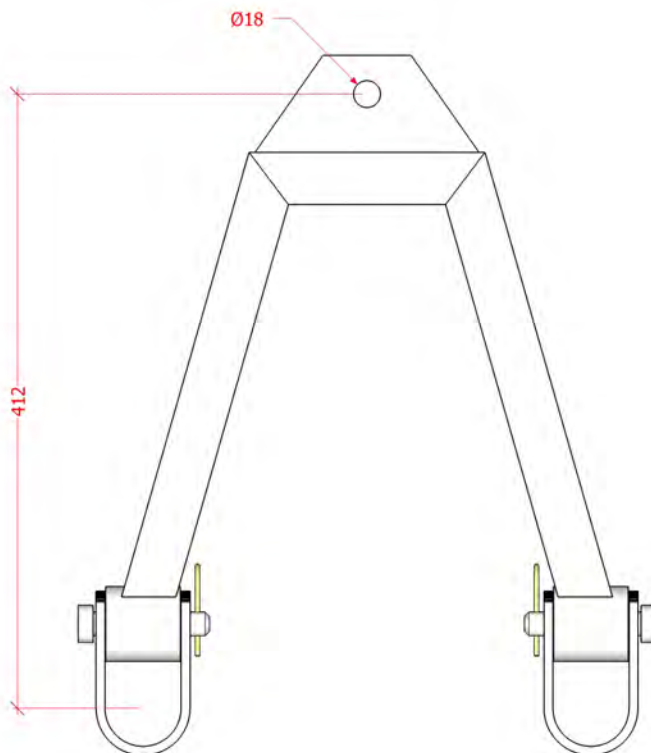
TR111

FEATURES:

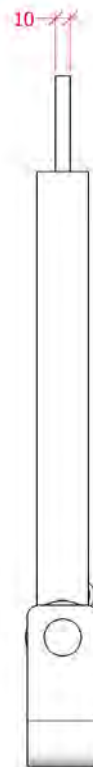
CLS SUSPENSION BRACKETS PROVIDE A TIDY AND EFFECTIVE MEANS OF HANGING 300mm TRI & BOX TRUSS PRODUCTS. EASILY INSTALLED, THEY'RE IDEAL FOR INSTALLATIONS WHERE AESTHETICS ARE PARAMOUNT - OR TRUSS BALANCE IS ESSENTIAL.



ISO



FRO

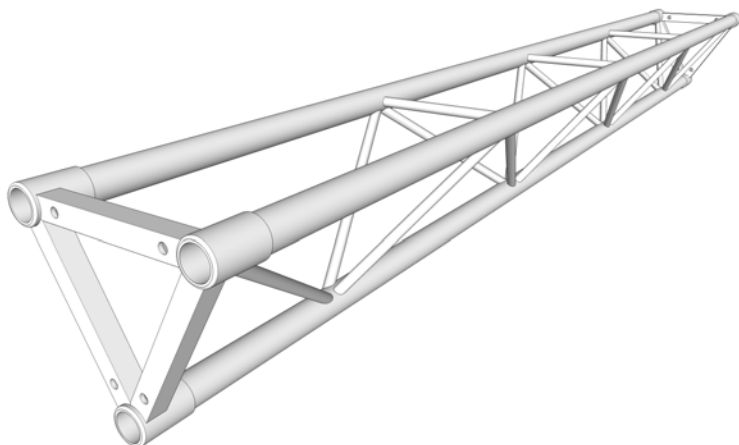


CLS Australia P/L
1 Rogers Street
Port Melbourne VIC 3207
P: (03) 9646 8890 E: info@clsa.com.au

©2008 CLSA PTY. LTD.



CONCERT LIGHTING SYSTEMS AUSTRALIA

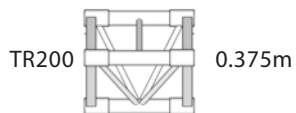
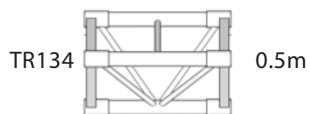
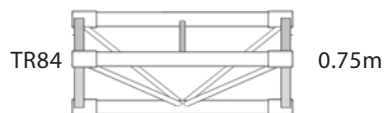
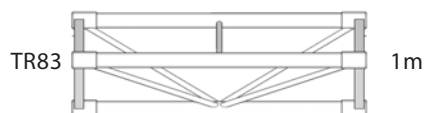
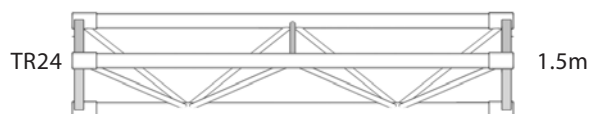
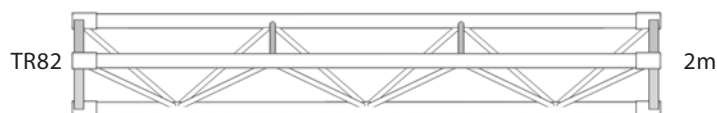
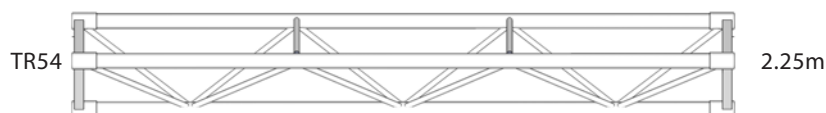
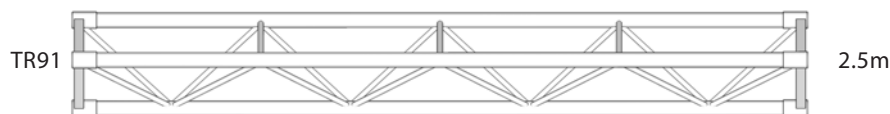
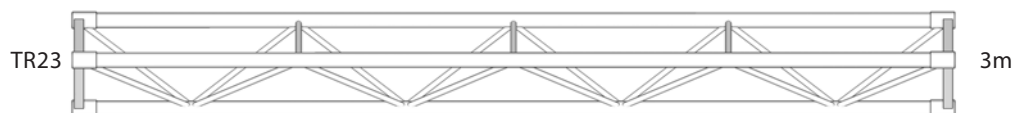


CLS TRI-TRUSS

TR23 TR24 TR54 TR73 TR82 TR83
TR84 TR91 TR123 TR124 TR134 TR200

FEATURES:

CLS TRI-TRUSS PRODUCTS ARE A STAPLE OF THE PRODUCTION INDUSTRY IN AUSTRALIA. MADE USING THE HIGHEST-GRADE STRUCTURAL ALUMINIUM, THEY'RE THE FIRST CHOICE FOR LIGHTING & RIGGING APPLICATIONS ANYWHERE FROM LOCAL 100-SEAT AUDITORIUMS TO CAVERNOUS VENUES INCLUDING THE EXHIBITION-CENTRE. BE IT FOR DRAPE SUPPORT OR STUNT RIGGING, CLS TRI-TRUSS WILL GET YOU OVER THE LINE.



4m, 5m & 6m ALSO AVAILABLE (FOR SALE ONLY) - SEE SALES PRICE-LIST.

CUSTOM SIZES (ACCURATE TO 1mm) AVAILABLE ON REQUEST.

SPAN (METRES)	MAXIMUM POINT LOAD (Kg)	MAXIMUM UNIFORMLY DISTRIBUTED LOAD (Kg/m)
3	390	430
6	295	100
9	185	40
12	41	13

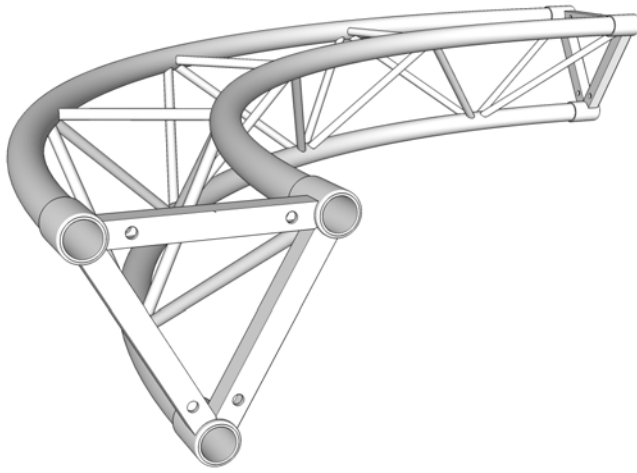
NOTE: • RATINGS VALID ONLY INDOORS
E.G. RATINGS DO NOT APPLY IN WIND
• RATINGS VALID ONLY FOR TRI-TRUSS
MADE SINCE 20-02-1991
(DESIGN CHANGE)
• ABOVE RATINGS IN ADDITION TO
NET WEIGHT OF SPAN (BASED ON
3M SECTIONS)

CLS Australia P/L
1 Rogers Street
Port Melbourne VIC 3207
P: (03) 9646 8890 E: info@clsa.com.au

©2008 CLSA PTY. LTD.



CONCERT LIGHTING SYSTEMS AUSTRALIA



CLS TRI-TRUSS CIRCLES

CT01 CT02 CT03 CT04 CT05
CT06 CT07 CT08 CT09

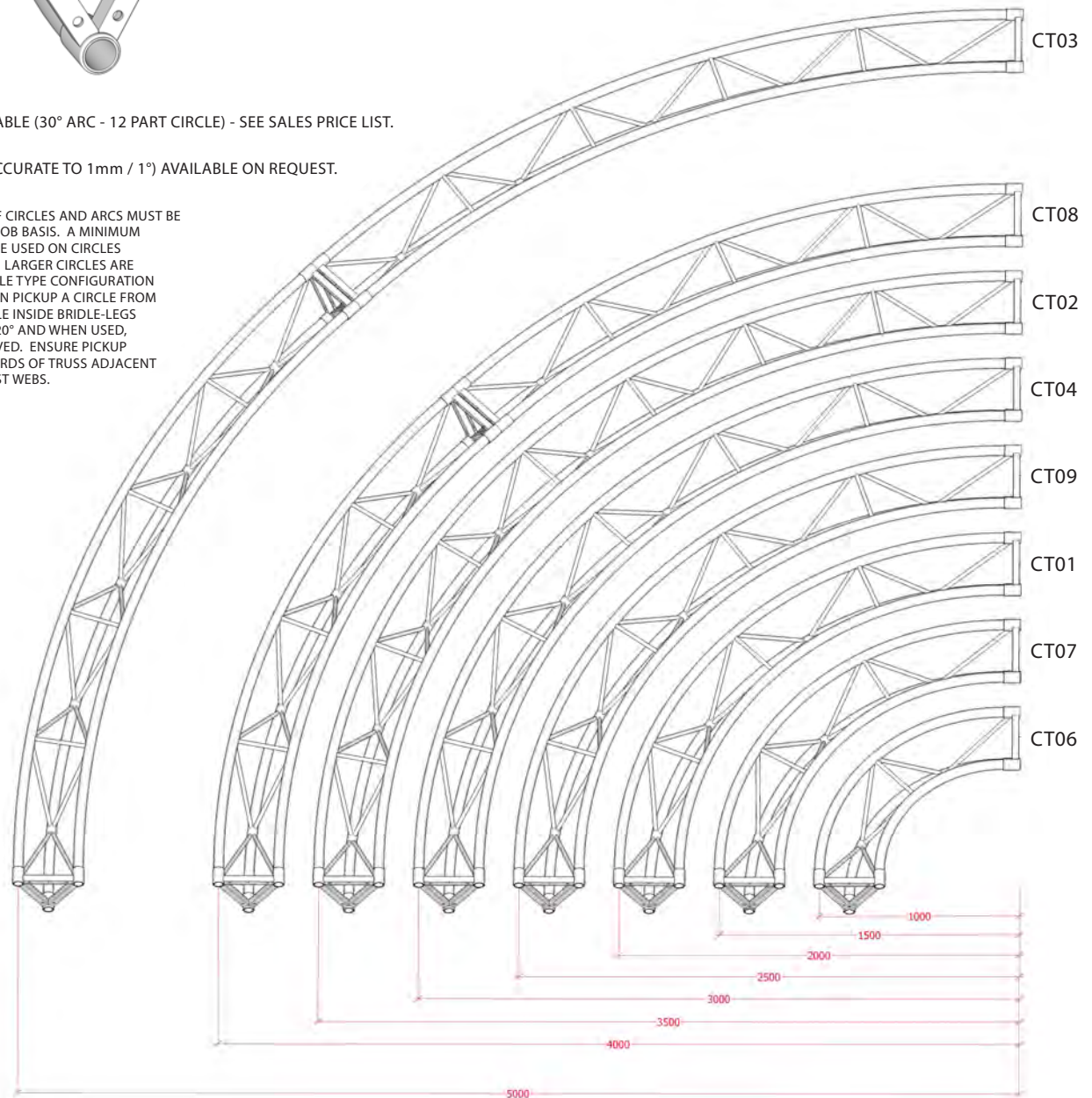
FEATURES:

CLS TRI-TRUSS CIRCLES OFFER AN ATTRACTIVE SOLUTION FOR LIGHTING SUPPORT AT SHOWPIECE EVENTS. MODERN MOVING LIGHTS BENEFIT FROM THE CIRCULAR FORMATION AND A TAUT SCRIM CAN BE RIGGED INSIDE THE CIRCLE TO CREATE A PROJECTION SURFACE - PARTICULARLY PRACTICAL FOR THE RANGE OF MOVING PROJECTOR FIXTURES NOW ON THE MARKET.

7.5m RADIUS ALSO AVAILABLE (30° ARC - 12 PART CIRCLE) - SEE SALES PRICE LIST.

CUSTOM RADII & ARCS (ACCURATE TO 1mm / 1°) AVAILABLE ON REQUEST.

NOTE: • CORRECT RIGGING OF CIRCLES AND ARCS MUST BE ASSESSED ON A PER-JOB BASIS. A MINIMUM FOUR POINTS MUST BE USED ON CIRCLES 2m RADIUS OR OVER. LARGER CIRCLES ARE BEST HUNG IN A BRIDLE TYPE CONFIGURATION (e.g. FOUR HOISTS CAN PICKUP A CIRCLE FROM EIGHT POINTS). ANGLE INSIDE BRIDLE-LEGS MUST NOT EXCEED 120° AND WHEN USED, SLING RATING IS HALVED. ENSURE PICKUP FROM BOTH TOP CHORDS OF TRUSS ADJACENT OR THROUGH NEAREST WEBS.

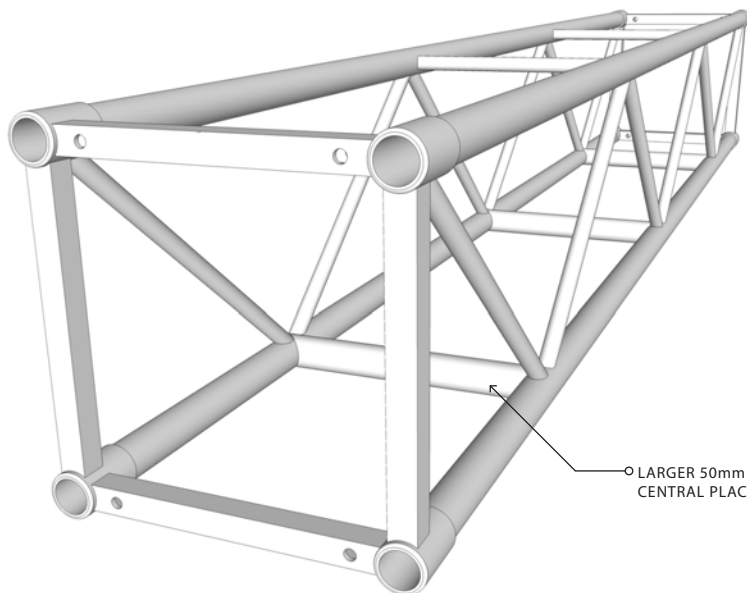


CLS Australia P/L
1 Rogers Street
Port Melbourne VIC 3207
P: (03) 9646 8890 E: info@clsa.com.au

©2008 CLSA PTY. LTD.



CONCERT LIGHTING SYSTEMS AUSTRALIA



CLS 400mm STANDARD-DUTY -TRUSS

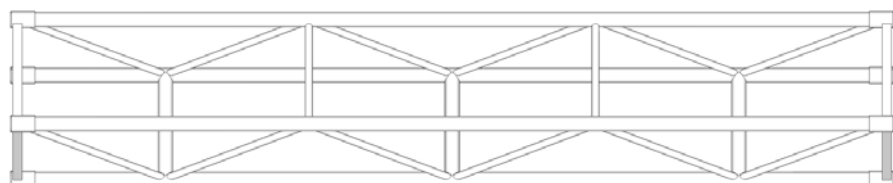
TR208 TR210 TR212

FEATURES:

CLS STANDARD-DUTY 400mm BOX TRUSS IS IDEAL FOR SCENARIOS WHERE YOU NEED ONLY THE CAPACITY OF 300mm BOX, BUT OVER A LARGER SPAN. WITH THE SAME CONSTRUCTION AS OUR 300mm PRODUCTS ALBEIT WITH SOME IMPROVEMENTS AFFORDED BY THE LARGER DESIGN, IT'S LIGHT WEIGHT, CLEAN AND ELEGANT.

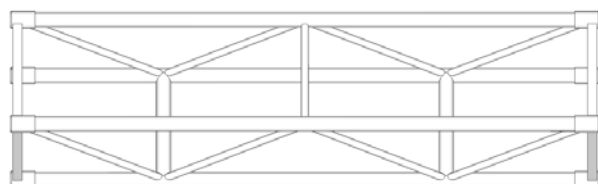
○ LARGER 50mm RUNGS ACCOMODATE MOVING LIGHTS.
CENTRAL PLACEMENT ALLOWS TRUSS TO HANG LEVEL.

TR208



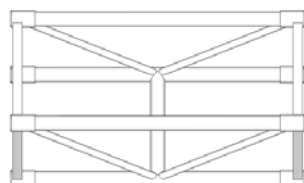
3m

TR210



2m

TR212



1m

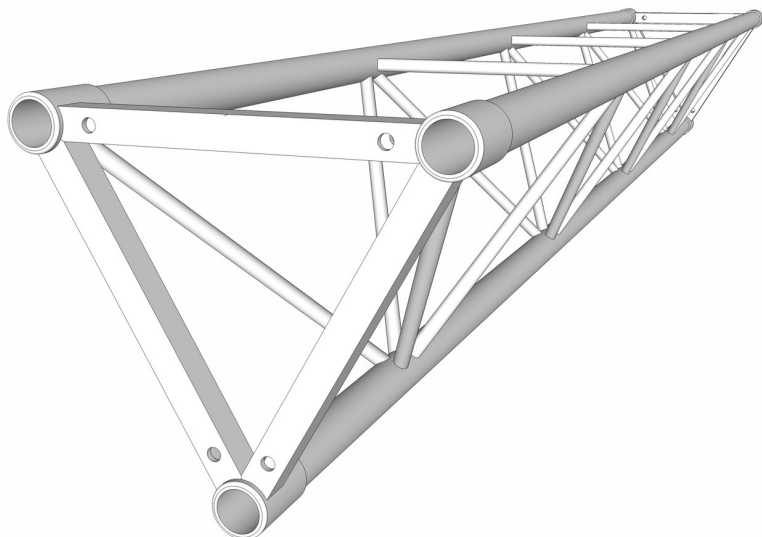
CUSTOM SIZES (ACCURATE TO 1mm) AVAILABLE ON REQUEST.

©2008 CLSA PTY. LTD.

CLS Australia P/L
1 Rogers Street
Port Melbourne VIC 3207
P: (03) 9646 8890 E: info@clsa.com.au



CONCERT LIGHTING SYSTEMS AUSTRALIA



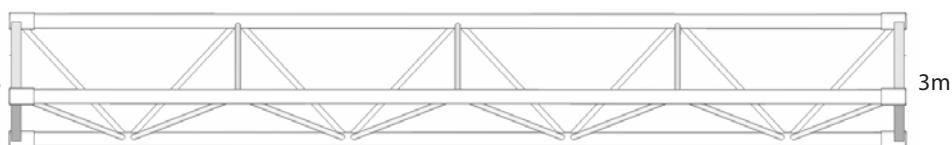
CLS 400mm STANDARD-DUTY TRI-TRUSS

TR213 TR214 TR215 TR216

FEATURES:

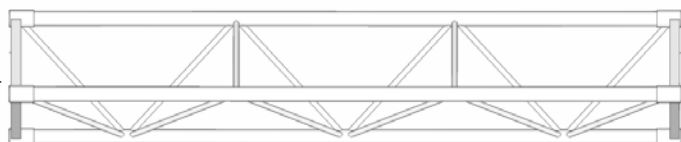
CLS STANDARD-DUTY 400mm TRI TRUSS IS IDEAL FOR SCENARIOS WHERE YOU NEED ONLY THE CAPACITY OF 300mm TRI, BUT OVER A LARGER SPAN. WITH THE SAME CONSTRUCTION AS OUR 300mm PRODUCTS, IT'S LIGHT-WEIGHT, CLEAN AND ELEGANT.

TR213



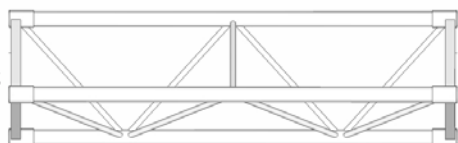
3m

TR214



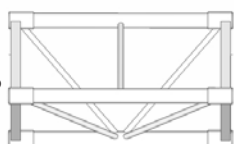
2.25m

TR215



1.5m

TR216



0.75m

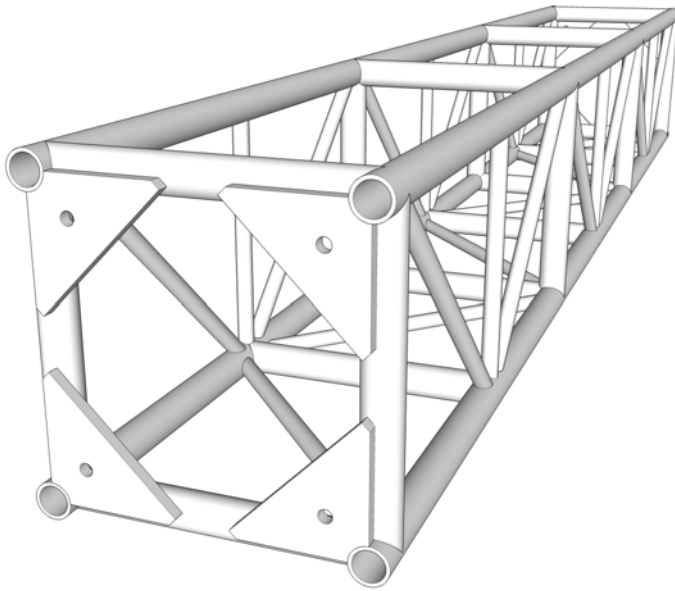
CUSTOM SIZES (ACCURATE TO 1mm) AVAILABLE ON REQUEST.

CLS Australia P/L
1 Rogers Street
Port Melbourne VIC 3207
P: (03) 9646 8890 E: info@clsa.com.au

©2008 CLSA PTY. LTD.



CONCERT LIGHTING SYSTEMS AUSTRALIA



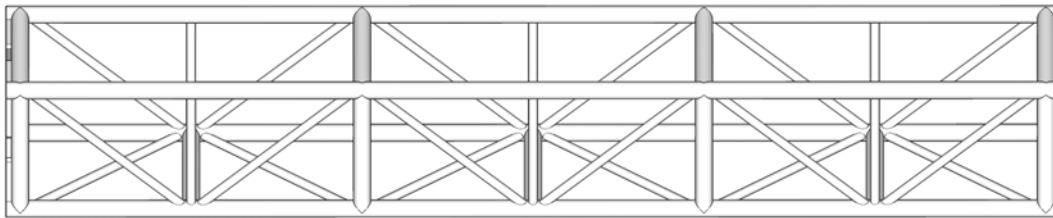
CLS 400mm BOX-TRUSS

TR115 TR116 TR117 TR118 TR131 TR132 TR181

FEATURES:

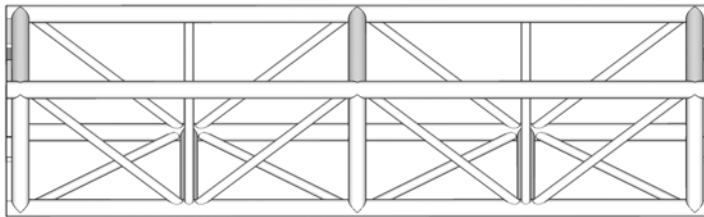
CLS 400mm BOX TRUSS - THE SMALLER BROTHER TO OUR FLAGSHIP 500mm SERIES - IS THE ANSWER WHEN YOU NEED TORSIONAL RIGIDITY OVER A WIDE-SPAN. MADE USING THE SAME SIZE MATERIALS AS CLS 500mm BOX, IT'S A REAL HEAVYWEIGHT. FOR TOURING SHOWS WITH LARGE MOVING FIXTURES BUT A PREMIUM ON TRUCK SPACE - 400mm BOX IS THE OBVIOUS CHOICE.

TR117



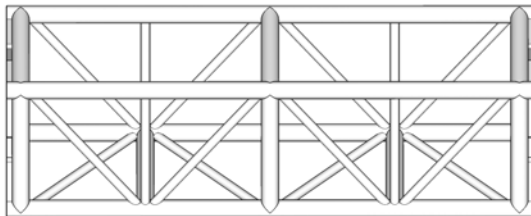
3m

TR116



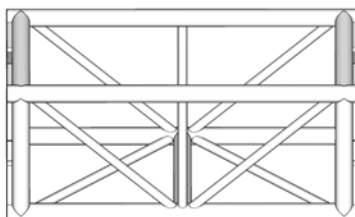
2m

TR181



1.5m

TR115



1m

4m, 5m & 6m ALSO AVAILABLE (FOR SALE ONLY) - SEE SALES PRICE-LIST.

CUSTOM SIZES (ACCURATE TO 1mm) AVAILABLE ON REQUEST.

NOT AVAILABLE FOR HIRE - USE 500mm BOX OR GROUND SUPPORT TOWERS INSTEAD.

GROUND SUPPORT TOWERS SHARE SAME DESIGN AND GEOMETRY BUT WITH ADDITIONAL 48.4mm RUNGS ON THE LADDER-SIDE.

SPAN (METRES)	MAXIMUM POINT LOAD (Kg)	MAXIMUM UNIFORMLY DISTRIBUTED LOAD (Kg/m)
3	5053	2405
6	1077	359
9	675	150
12	462	76
15	329	43
18	222	24

NOTE: • RATINGS VALID ONLY INDOORS
E.G. RATINGS DO NOT APPLY IN WIND
• ABOVE RATINGS IN ADDITION TO
NET WEIGHT OF SPAN (BASED ON
3M SECTIONS)

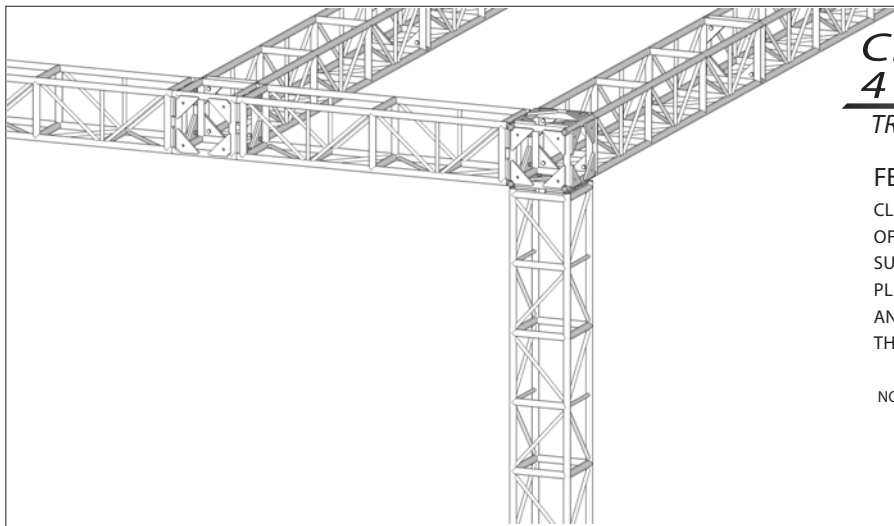
CLS Australia P/L
1 Rogers Street
Port Melbourne VIC 3207

P: (03) 9646 8890 E: info@clsa.com.au

©2008 CLSA PTY. LTD.



CONCERT LIGHTING SYSTEMS AUSTRALIA



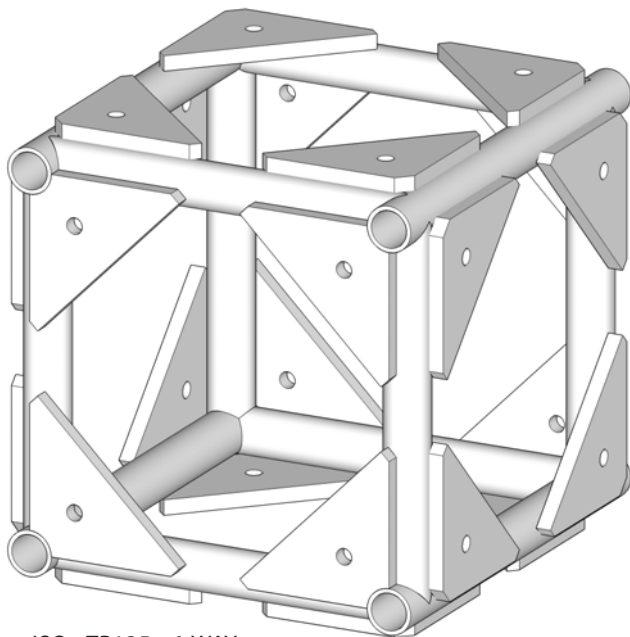
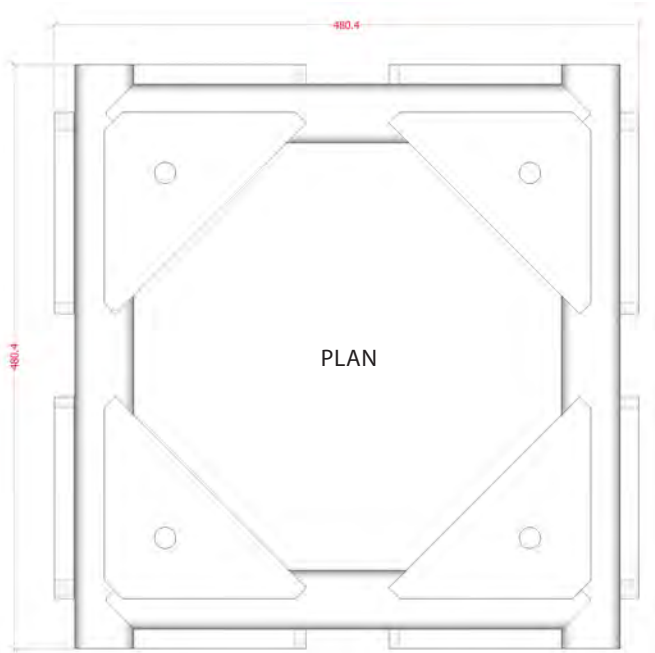
CLS 400mm BOX 4 & 6-WAY JOINERS

TR135 TR214

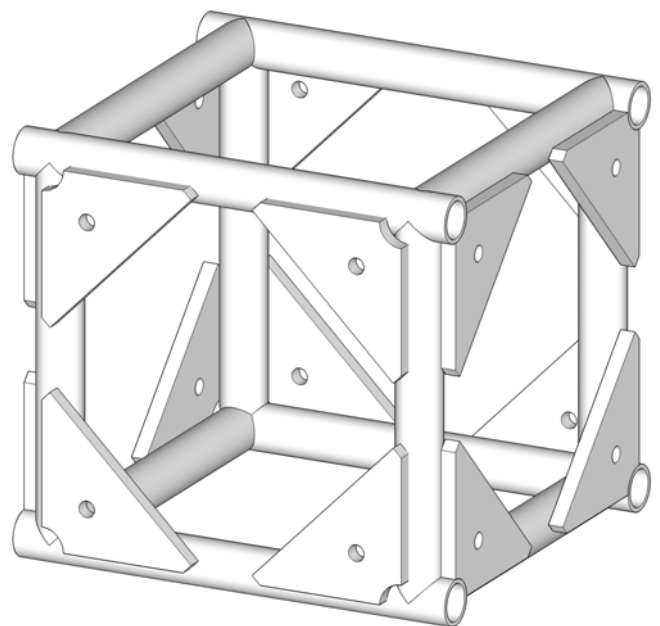
FEATURES:

CLS 400mm BOX-TRUSS JOINING CUBES ARE THE STANDARD MEANS OF BUILDING HEAVY-DUTY MOTHER-GRIDS OR CRANE-ERECTED GROUND SUPPORT STRUCTURES. THEY FEATURE THE SAME 16mm ALLOY GUSSET-PLATES FOUND THROUGHOUT ALL CLS 400 & 500mm BOX PRODUCTS, AND AS SUCH PROVIDE THE CONSISTENT APPEARANCE AND RIGIDITY THE PRODUCTION INDUSTRY IN AUSTRALIA HAS COME TO EXPECT.

NOTE: • IN A MOTHER-GRID - USE CUBES AND JOINING SECTIONS TO SHARE LOAD ACROSS HOISTS AND AID LATERAL RIGIDITY. DO NOT CREATE A MOTHER-GRID TO REDUCE THE OVERALL NUMBER OF HOISTS REQUIRED - ALWAYS OVER-SPECIFY RIGGING, PICKUP EACH HEAVY RUN INDEPENDENTLY, AND FACTOR IN SELF-WEIGHT OF TRUSS & RIGGING.



ISO - TR135 - 6-WAY



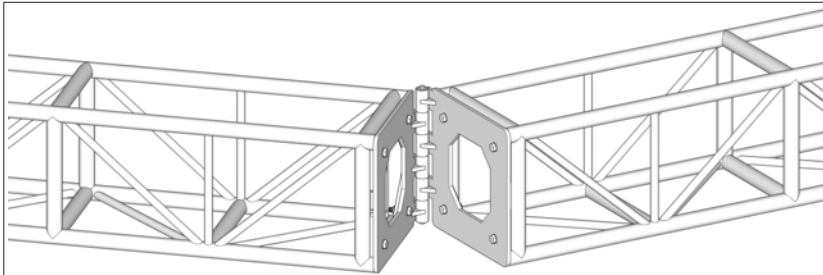
ISO - TR214 - 4-WAY

©2008 CLSA PTY. LTD.

CLS Australia P/L
1 Rogers Street
Port Melbourne VIC 3207
P: (03) 9646 8890 E: info@clsa.com.au



CONCERT LIGHTING SYSTEMS AUSTRALIA



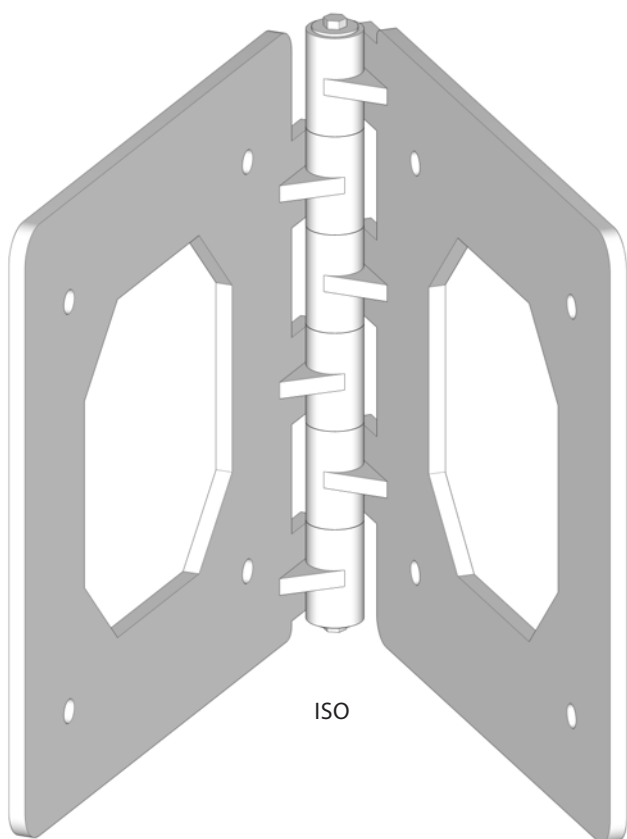
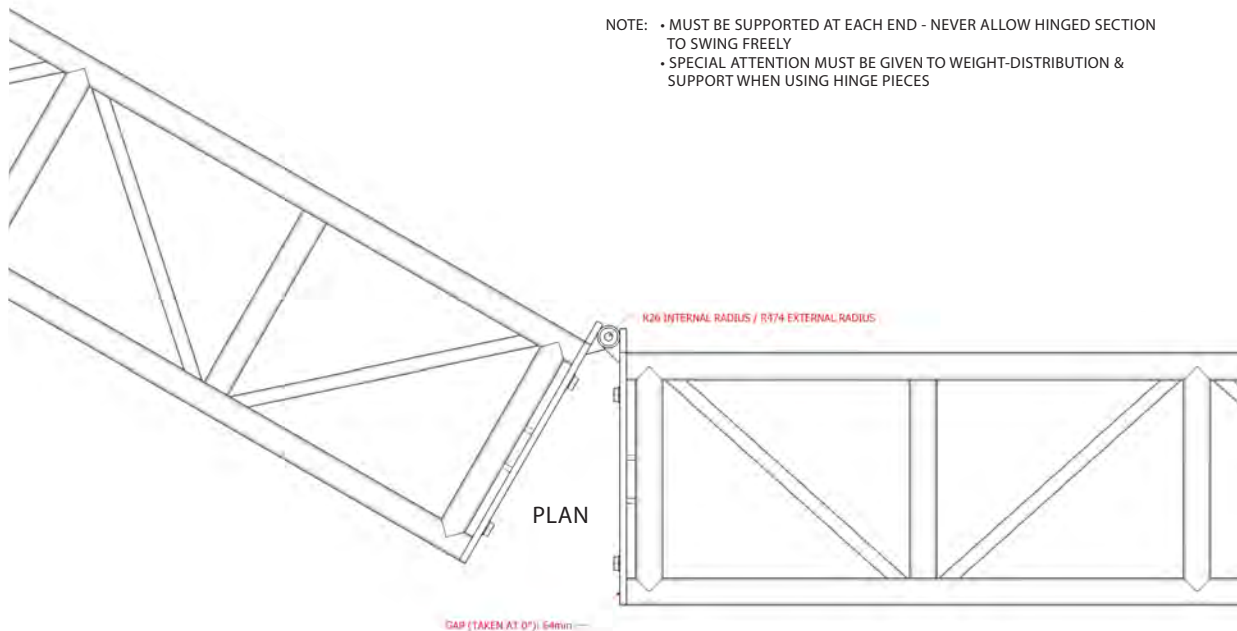
CLS 400mm BOX-TRUSS HINGE-JOINER

TR213

FEATURES:

CLS 400mm HINGE-JOINERS OFFER A SOLID-MEANS OF CONNECTING ADJACENT RUNS OF TRUSS. MADE FROM 12mm ALLOY PLATE WITH GUSSET-REINFORCED HINGES, THE HINGE-JOINER IS IDEAL FOR CLOSING A TRIANGLE OR TO KEEP A SEAMLESS SHAPE FOR 'IN THE ROUND' LIGHTING & DRAPE SUPPORT.

NOTE: • MUST BE SUPPORTED AT EACH END - NEVER ALLOW HINGED SECTION TO SWING FREELY
• SPECIAL ATTENTION MUST BE GIVEN TO WEIGHT-DISTRIBUTION & SUPPORT WHEN USING HINGE PIECES



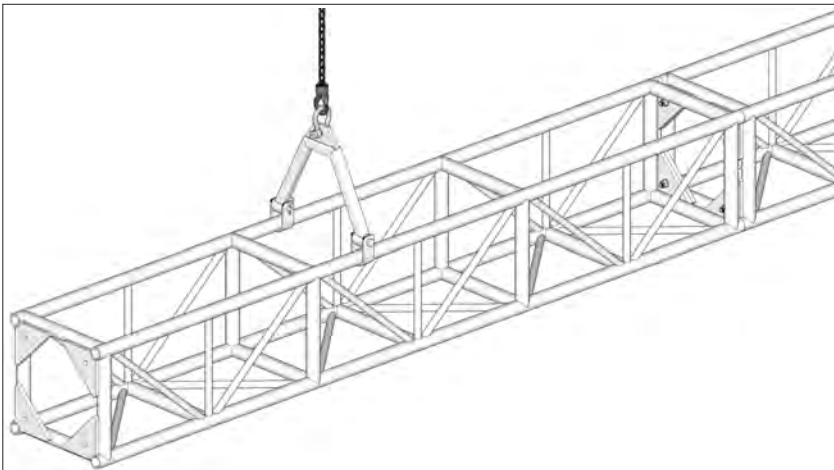
ISO

©2008 CLSA PTY. LTD.

CLS Australia P/L
1 Rogers Street
Port Melbourne VIC 3207
P: (03) 9646 8890 E: info@clsa.com.au



CONCERT LIGHTING SYSTEMS AUSTRALIA

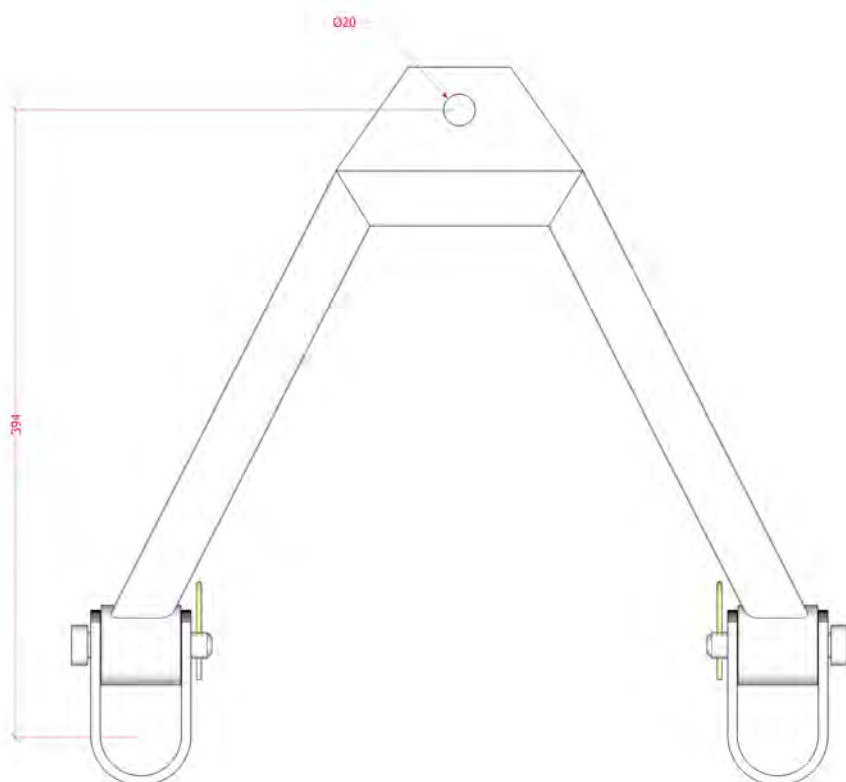
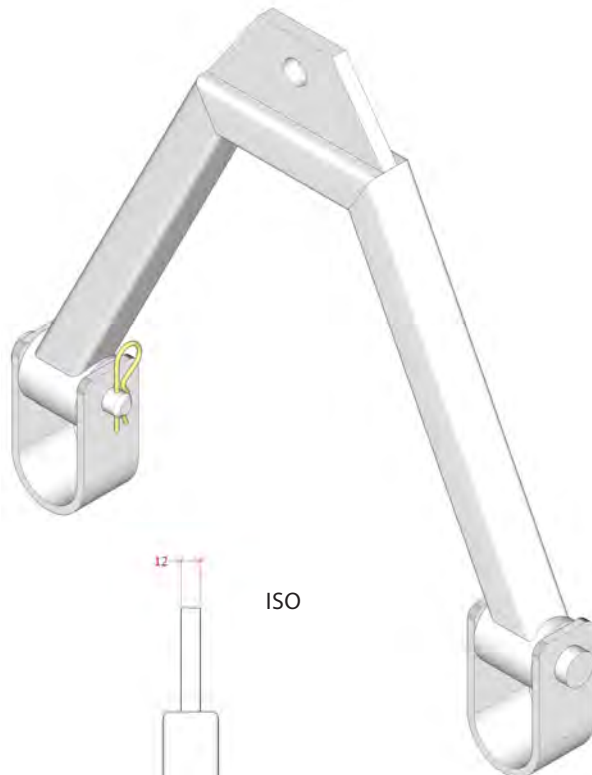


CLS 400mm BOX-TRUSS SUSPENSION BRACKET

TR112

FEATURES:

CLS 400mm SUSPENSION BRACKETS ARE A TIDY AND EFFECTIVE MEANS OF HANGING 400mm BOX TRUSS PRODUCTS. IDEAL FOR INSTALLATIONS WHERE BALANCE IS ESSENTIAL OR A QUICK MEANS OF RIGGING AND DE-RIGGING IS REQUIRED.



FRONT



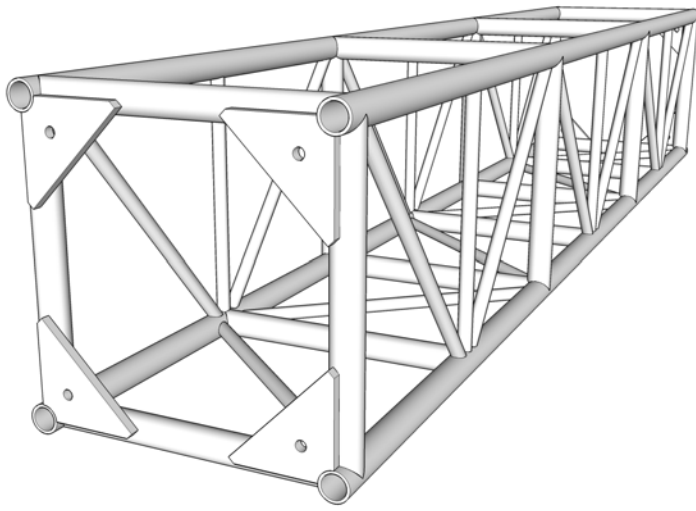
SIDE

CLS Australia P/L
1 Rogers Street
Port Melbourne VIC 3207
P: (03) 9646 8890 E: info@clsa.com.au

©2008 CLSA PTY. LTD.



CONCERT LIGHTING SYSTEMS AUSTRALIA

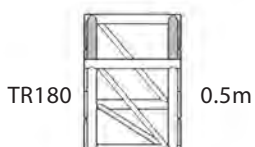
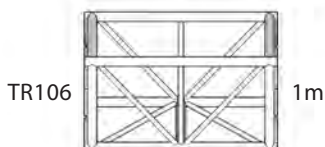
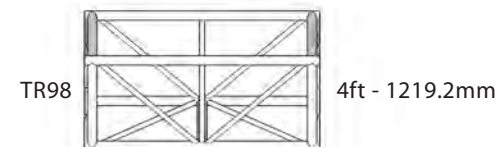
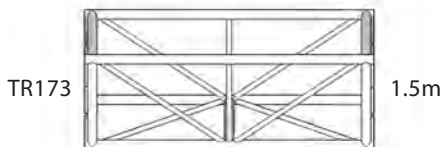
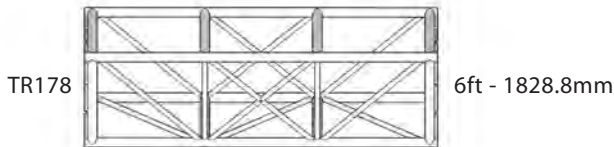
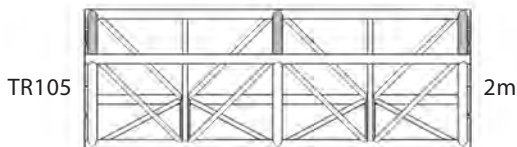
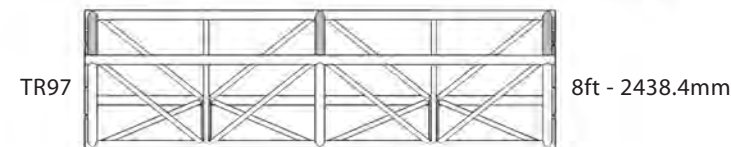
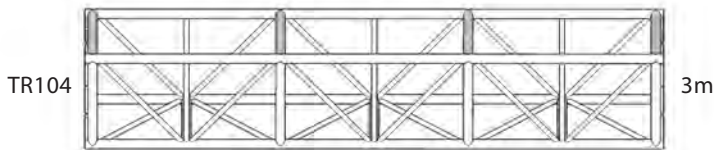


CLS 500mm BOX-TRUSS

TR97 TR98 TR104 TR105 TR106 TR178 TR179 TR180

FEATURES:

CLS 500mm BOX TRUSS IS OUR FLAGSHIP TRUSS PRODUCT. BUILT TOUGH TO LAST - IT'S A REAL PERFORMER. IT'S SIZE MAKES IT EASY TO TRAVERSE FOR TRUSS-SPOT OPERATORS AND RIGGERS, AND THE SPACING BETWEEN THE WEBS ALLOWS FOR FLEXIBLE PLACEMENT OF MOVING FIXTURES. CHAIN-HOISTS CAN ALSO BE RIGGED INSIDE THE PROFILE OF THE TRUSS, ALLOWING BOTH A SEAMLESS-FINISH (PARTICULARLY IF CLAD WITH SIGNAGE), AS WELL AS THE ABILITY TO FLY THE RIG ALL THE WAY UP WITHOUT OBSTRUCTION. TRULY THE BENIFITS ARE TOO NUMEROUS TO LIST.



CUSTOM SIZES (ACCURATE TO 1mm) AVAILABLE ON REQUEST.
CUSTOM CIRCLES/ARCS ALSO AVAILABLE - ACCURATE TO 1°

SPAN (FEET)	MAXIMUM POINT LOAD (Kg)	MAXIMUM UNIFORMLY DISTRIBUTED LOAD (Kg/m)
8	7785	3162
16	1694	694
24	1095	299
32	785	160
40	591	96
48	455	61
56	352	41
64	269	28

SPAN (METRES)	MAXIMUM POINT LOAD (Kg)	MAXIMUM UNIFORMLY DISTRIBUTED LOAD (Kg/m)
3	6322	2405
6	1360	453
9	864	192
12	603	100
15	437	58
18	317	46

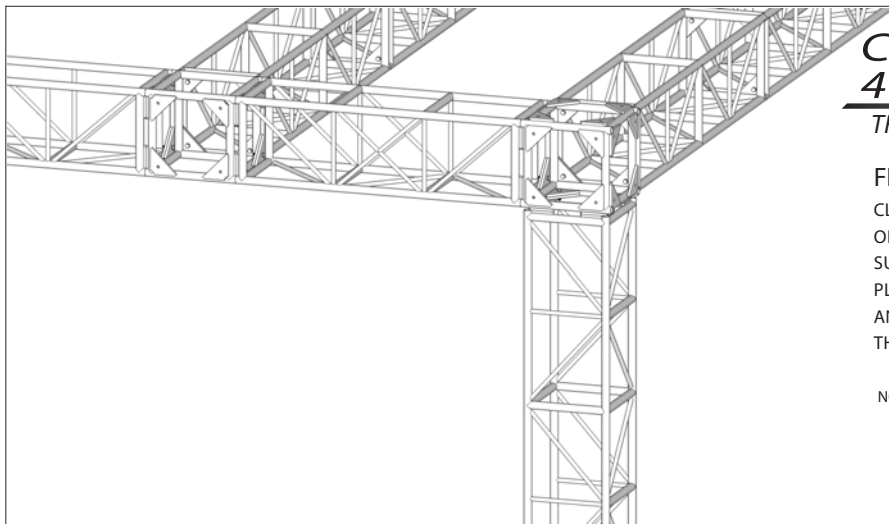
NOTE: • RATINGS VALID ONLY INDOORS
E.G. RATINGS DO NOT APPLY IN WIND
• ABOVE RATINGS IN ADDITION TO
NET WEIGHT OF SPAN (BASED ON
3M SECTIONS)

©2008 CLSA PTY. LTD.

CLS Australia P/L
1 Rogers Street
Port Melbourne VIC 3207
P: (03) 9646 8890 E: info@clsa.com.au



CONCERT LIGHTING SYSTEMS AUSTRALIA



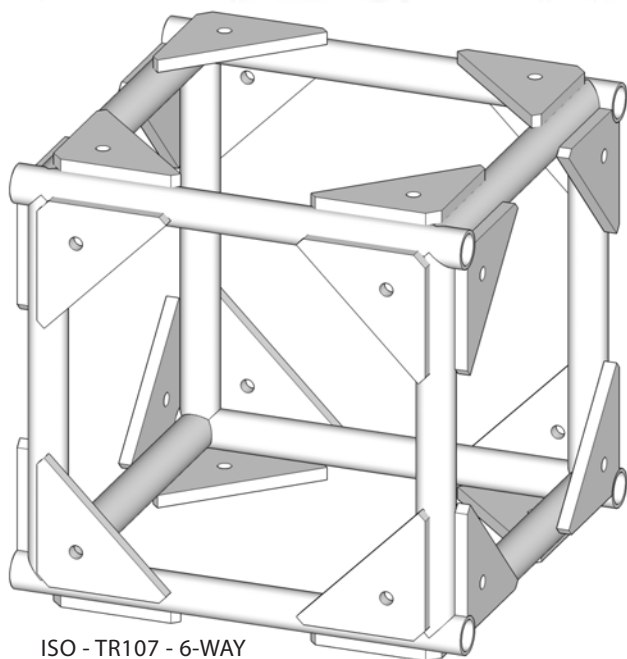
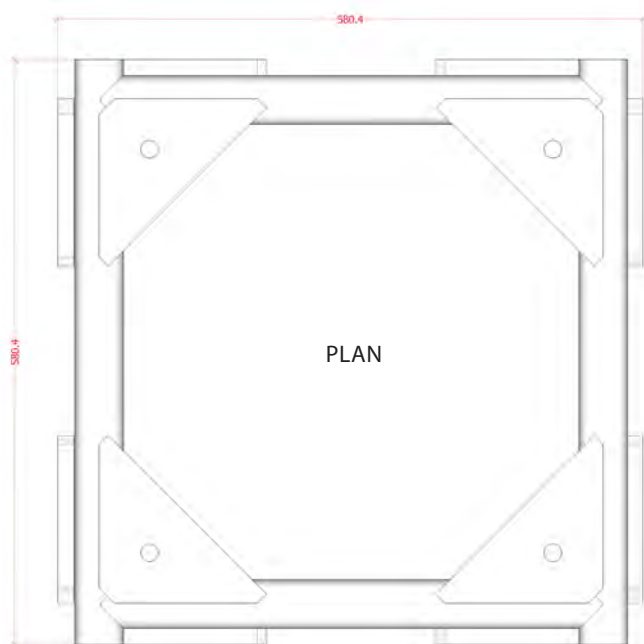
CLS 500mm BOX 4 & 6-WAY JOINERS

TR99 TR107

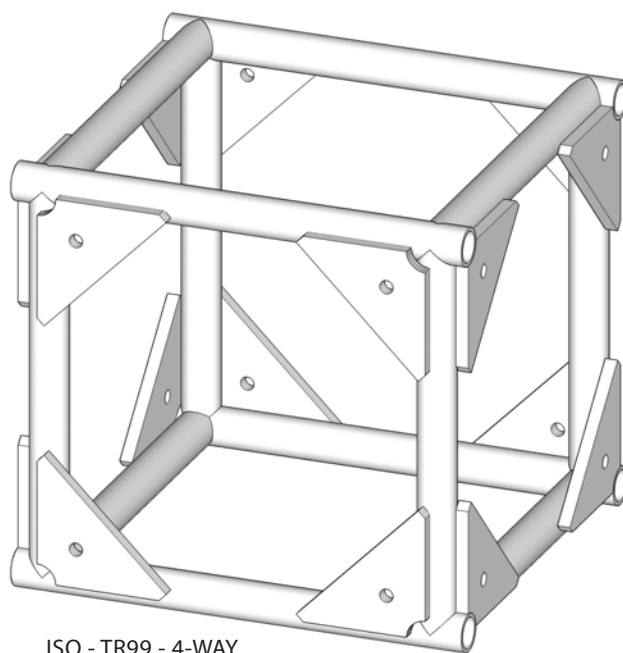
FEATURES:

CLS 500mm BOX-TRUSS JOINING CUBES ARE THE STANDARD MEANS OF BUILDING HEAVY-DUTY MOTHER-GRIDS OR CRANE-ERECTED GROUND SUPPORT STRUCTURES. THEY FEATURE THE SAME 16mm ALLOY GUSSET-PLATES FOUND THROUGHOUT ALL CLS 400 & 500mm BOX PRODUCTS, AND AS SUCH PROVIDE THE CONSISTENT APPEARANCE AND RIGIDITY THE PRODUCTION INDUSTRY IN AUSTRALIA HAS COME TO EXPECT.

NOTE: • IN A MOTHER-GRID - USE CUBES AND JOINING SECTIONS TO SHARE LOAD ACROSS HOISTS AND AID LATERAL RIGIDITY. DO NOT CREATE A MOTHER-GRID TO REDUCE THE OVERALL NUMBER OF HOISTS REQUIRED - ALWAYS OVER-SPECIFY RIGGING, PICKUP EACH HEAVY RUN INDEPENDENTLY, AND FACTOR IN SELF-WEIGHT OF TRUSS & RIGGING.



ISO - TR107 - 6-WAY



ISO - TR99 - 4-WAY

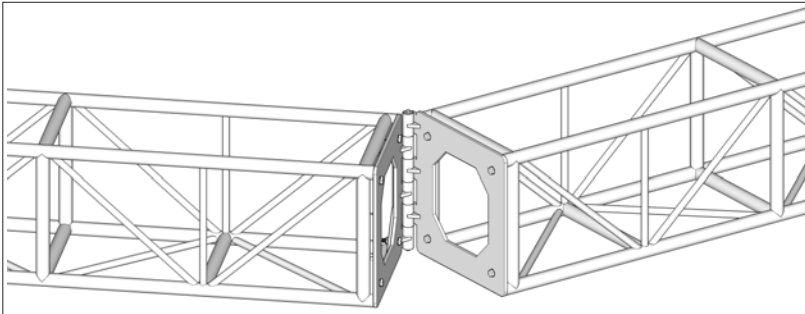
©2008 CLSA PTY. LTD.

CLS Australia P/L
1 Rogers Street
Port Melbourne VIC 3207

P: (03) 9646 8890 E: info@clsa.com.au

CONCERT LIGHTING SYSTEMS AUSTRALIA





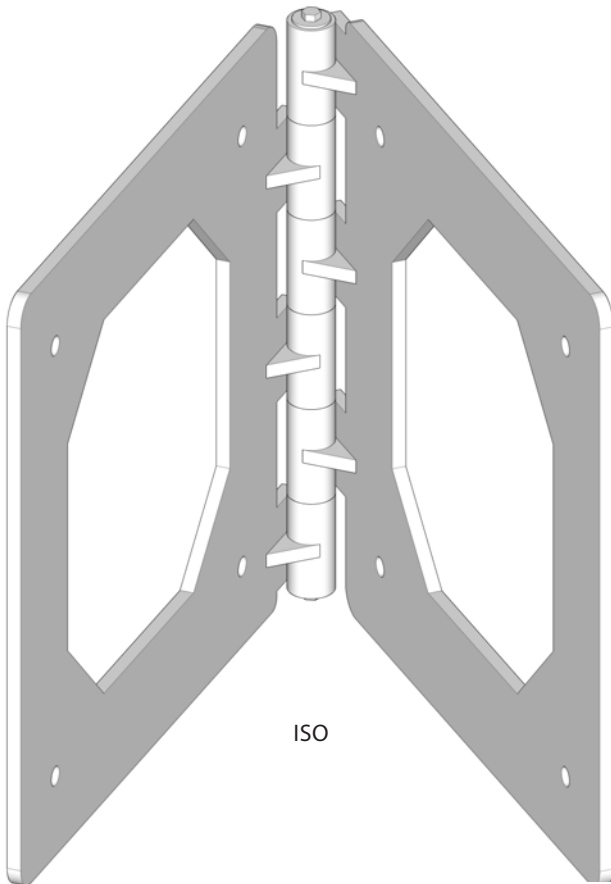
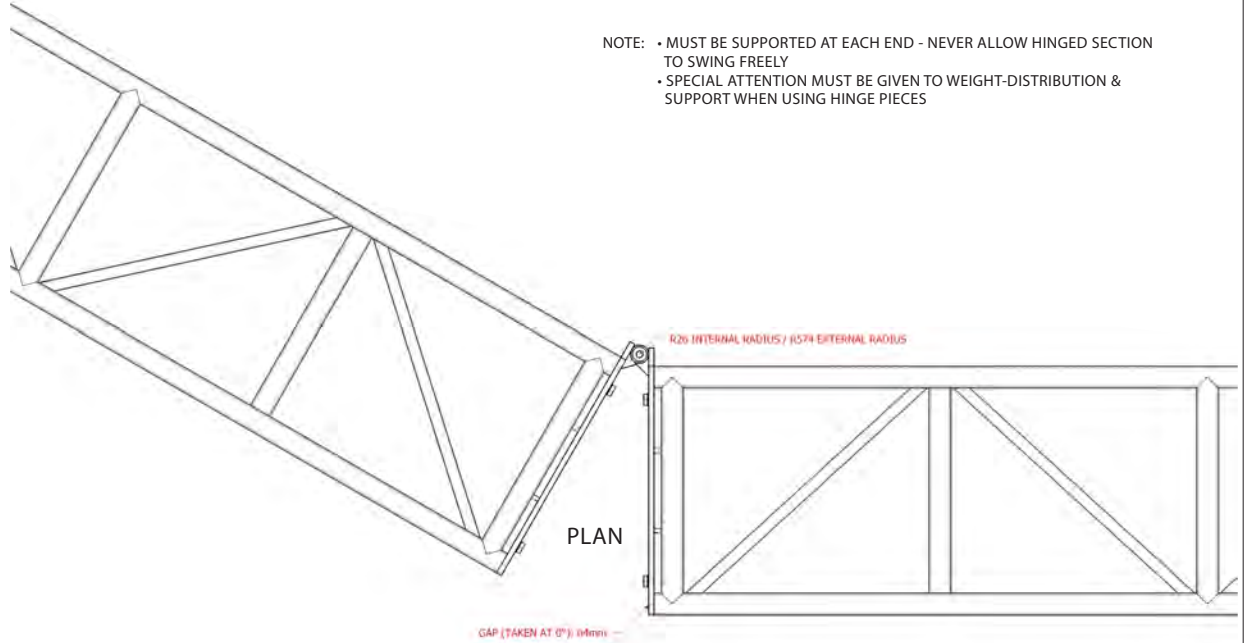
CLS 500mm BOX-TRUSS HINGE-JOINER

TR136

FEATURES:

CLS 500mm HINGE-JOINERS OFFER A SOLID-MEANS OF CONNECTING ADJACENT RUNS OF TRUSS. MADE FROM 12mm ALLOY PLATE WITH GUSSET-REINFORCED HINGES, THE HINGE-JOINER IS IDEAL FOR CLOSING A TRIANGLE OR TO KEEP A SEAMLESS SHAPE FOR 'IN THE ROUND' LIGHTING & DRAPE SUPPORT.

NOTE: • MUST BE SUPPORTED AT EACH END - NEVER ALLOW HINGED SECTION TO SWING FREELY
• SPECIAL ATTENTION MUST BE GIVEN TO WEIGHT-DISTRIBUTION & SUPPORT WHEN USING HINGE PIECES



ISO

©2008 CLSA PTY. LTD.

CLS Australia P/L
1 Rogers Street
Port Melbourne VIC 3207
P: (03) 9646 8890 E: info@clsa.com.au

CONCERT LIGHTING SYSTEMS AUSTRALIA

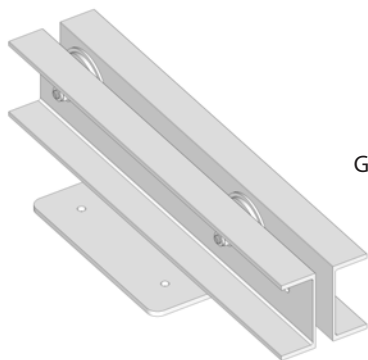


GROUND SUPPORT SYSTEM COMPONENTS

GS01 GS04 GS07 GS10

GS10 - ALLOY CAT HEAD

- REVISED TO FACILITATE INNER PULLEY POSITION FOR PICKUP FROM GS02 LIFTING PLATE

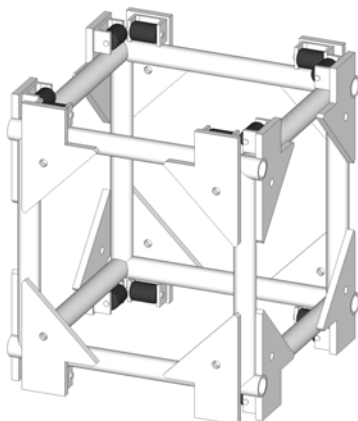


FEATURES:

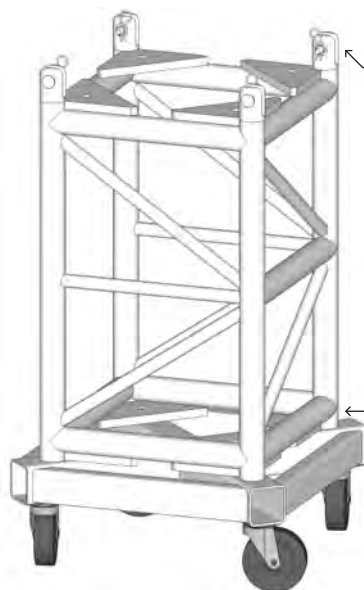
THESE COMPONENTS ARE THE FUNDAMENTAL PIECES BEHIND THE GSS DESIGN. THE TROLLEY SECTION CLIMBS THE TOWER, THROUGH A CHAIN-HOIST THREADED OVER THE CAT HEAD PULLEY SYSTEM AND BACK TO THE TROLLEY SECTION VIA THE LIFTING PLATE OR ANOTHER SECTION OF TRUSS. THE 'KNUCKLE' IS A 0.7m TOWER SECTION WITH THE FEMALE COUPLINGS TO MATE WITH THE 3m TOWER SECTION. THE STEEL BASE HAS FOUR BOLTS, ONE TO SECURE EACH LEG. THE WEIGHT IS REMOVED FROM THE CASTORS.

NOTE: • THESE COMPONENTS - INCLUDING THE CLEVIS PINS & R-CLIPS - CAN TRAVEL TOGETHER AS SHOWN BELOW. HOWEVER GREAT CARE MUST BE TAKEN WHEN STOWING OR TRAVELLING, AS THEY'RE HEAVY AND HAVE A HIGH CENTRE OF GRAVITY. IF USING RAMPS OR TAILGATE LIFTERS - BE SURE TO BRACE OR HOLD CUBE FROM A LOW POSITION.

GS01 - 4-WAY TROLLEY SECTION



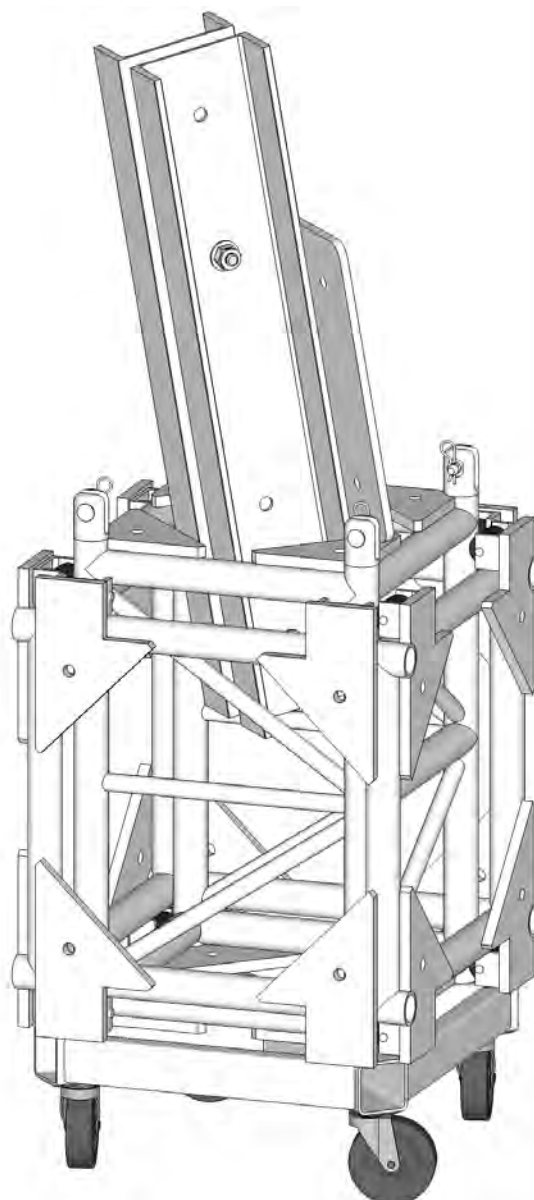
GS04 - 0.7m SECTION W/COUPLINGS



○ CLEVIS PINS & R-CLIPS NOT INCLUDED.

○ M16 BASE BOLT SETS NOT INCLUDED.

GS07 - STEEL BASE W/ CASTORS



CLS Australia P/L
1 Rogers Street
Port Melbourne VIC 3207
P: (03) 9646 8890 E: info@clsa.com.au

©2009 CLSA PTY. LTD.



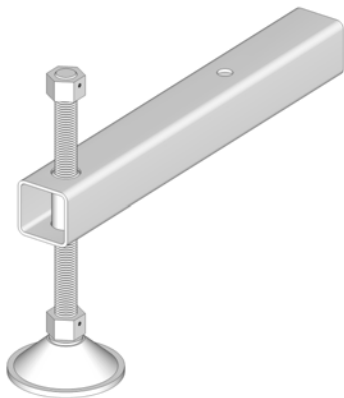
CONCERT LIGHTING SYSTEMS AUSTRALIA

GROUND SUPPORT SYSTEM COMPONENTS

GS02 GS05 GS06 GS08 GS09 TR60

FEATURES:

THESE COMPONENTS ARE SIMILARLY FUNDAMENTAL TO THE GROUND SUPPORT SYSTEM DESIGN, BUT HAVE INTERCHANGEABLE OPTIONS. FOR INDOOR RIGS ON FLOORS WITH CONSIDERABLE GROUND-BEARING PRESSURE RATINGS, THE SMALLER 0.5m LEGS ARE ADEQUATE AND SPACE- SAVING. THESE LEGS ARE ALSO USED ON A SINGLE SIDE OF OUTDOOR TOWERS TO NOT INTERFERE WITH STAGE SUPPORTS OR STAIRS. THE LARGER LEGS ARE TYPICALLY USED OUTDOORS OR INDOORS WHERE BROADER WEIGHT DISTRIBUTION IS REQUIRED. SHEETS OF TIMBER PACKING SHOULD BE USED TO DISTRIBUTE WEIGHT FURTHER. OTHER COMPONENTS INCLUDE LIFTING PLATES TO PICK UP TROLLEY CUBES, AND CUSTOM HOIST RIGGING BRACKETS.



GS06 - 0.5m LEG W/ SWIVEL FOOT



GS09 - ALLOY BRACE W/ COUPLER & PIN

GS08 - 1.5m LEG W/ 2 SWIVEL FEET

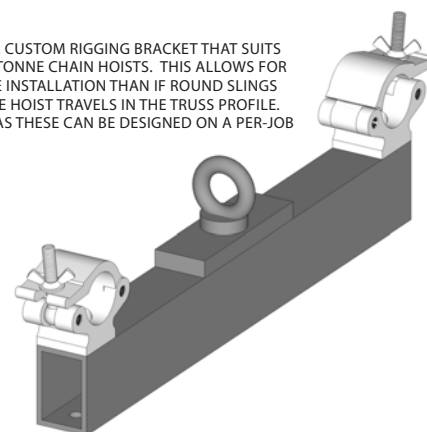
GS02 - LIFTING PLATES



GS05 - FLAT HEAD PIN & R-CLIP

FOUR PINS & R-CLIPS REQUIRED PER TOWER.

SHOWN HERE IS A CUSTOM RIGGING BRACKET THAT SUITS GIS & CM 1/2 & 1 TONNE CHAIN HOISTS. THIS ALLOWS FOR A LOWER-PROFILE INSTALLATION THAN IF ROUND SLINGS ARE USED - AS THE HOIST TRAVELS IN THE TRUSS PROFILE. BRACKETS SUCH AS THESE CAN BE DESIGNED ON A PER-JOB BASIS.



TR60 - REPLACEMENT TRUSS PIN & R-CLIP

TWO PINS & R-CLIPS ARE INCLUDED WITH THE GS09.

CLS Australia P/L
1 Rogers Street
Port Melbourne VIC 3207
P: (03) 9646 8890 E: info@clsa.com.au

©2009 CLSA PTY. LTD.



CONCERT LIGHTING SYSTEMS AUSTRALIA

GROUND SUPPORT TOWER COMPONENTS

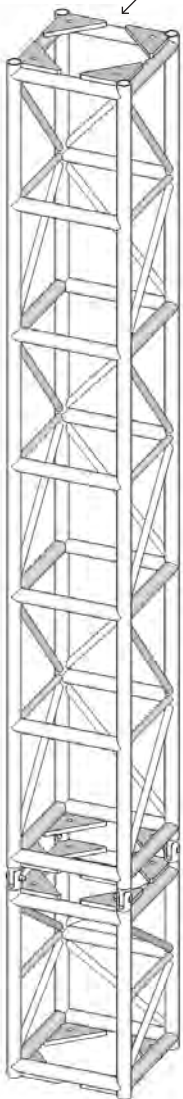
GS03 GS04 GS18 GS19 GS20 GS21

FEATURES:

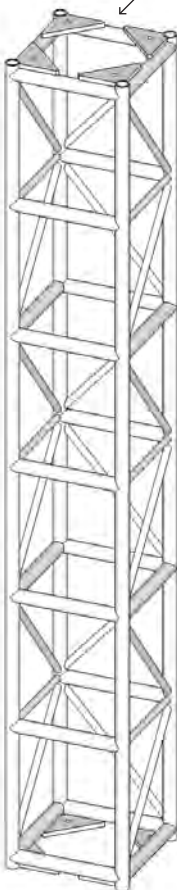
THE TOWER DESIGN FOR THE CLS GROUND SUPPORT SYSTEM IS MODELED ON STANDARD 400mm CLS BOX TRUSS. IT'S MADE MORE RIGID BY ADDITIONAL HORIZONTAL 'RUNGS' AND THE CONDENSED DESIGN OF COMPONENTS LIKE THE 1.5m SECTION. ONE 0.7m SECTION AND ONE 3m TOWER WITH COUPLINGS MUST BE USED PER TOWER, AS THEIR LINKAGE PROVIDES THE HINGE. ABOVE THAT, ANY COMBINATION MAY BE USED. FOR TOWERS OVER 6m (MEASURED ABOVE THE HINGE) A JIB MUST BE INSTALLED TO RAISE THE TOWER USING THE CHAIN HOIST. ALTERNATIVELY, A FORKLIFT OR TELEHANDLER WITH A ROLLER OR NYLON BLOCK FITTED ON THE TINE MAY RAISE THE TOWERS.

NOTE: • REGULAR 400mm BOX TRUSS - CLS MADE OR OTHERWISE - MUST NOT BE USED. TOWERS MUST BE CONFIGURED SYMMETRICALLY AROUND STAGE TO ENSURE EQUAL RESISTANCE AND LOADING AGAINST LATERAL FORCES.

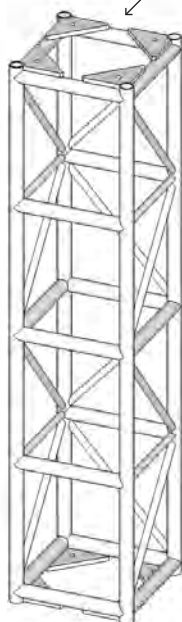
GS03 - 3m TOWER SECTION W/ COUPLINGS



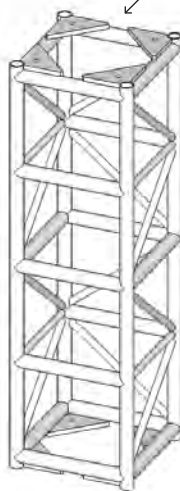
GS18 - 3m TOWER SECTION



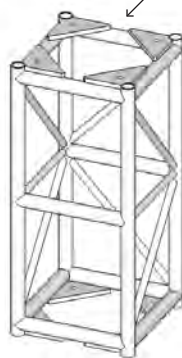
GS19 - 2m TOWER SECTION



GS20 - 1.5m TOWER SECTION



GS21 - 1m TOWER SECTION



GS04 - 0.7m TOWER SECTION W/ COUPLINGS

CLS Australia P/L
1 Rogers Street
Port Melbourne VIC 3207
P: (03) 9646 8890 E: info@clsa.com.au

©2009 CLSA PTY. LTD.



CONCERT LIGHTING SYSTEMS AUSTRALIA