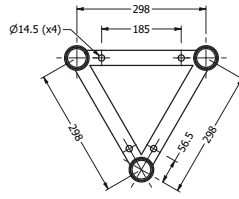


TRI TRUSS 300MM CENTRES (APEX DOWN)

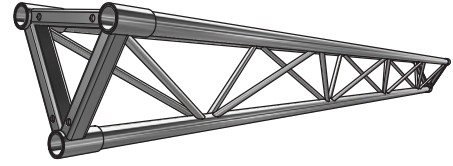
PART No. TR23

PARTS LIST

Chords	50 x 3mm CHS
End Sleeves	57.2 x 75 x 3.6 CHS
Webs	19 x 3mm CHS
End Joining Braces	32 x 32 x 6mm SHS
Note:	
1. All tubes from Aluminium Alloy 6061 T6	
2. Weld Material 5356	



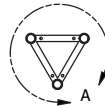
DETAIL A



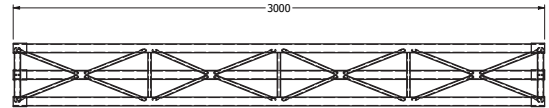
PERSPECTIVE VIEW (APEX DOWN)

JOINING KIT

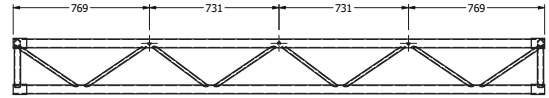
3 x Alloy Truss Pin 230 x 43 x 3mm CHS	
4 x High Tensile Machine Bolt 4" x 1/2" UNC Plated Grade 8.8	
8 x Washers High Tensile 26 x 13.8 x 3mm Grade F436	
4 x Zinc Plated 1/2" UNC Wingnut	
Note:	
1. Pin from Aluminium Alloy 6061 T6	
2. Thread should be kept lubricated	
3. Spring Washer or Nylor Nut should be used if truss is subject to vibration	



END VIEW



TOP VIEW



FRONT VIEW

ALLOWABLE LOADING

SPAN m	UDL kg/m	DEFLECTION mm	MAXIMUM ALLOWABLE POINT LOADS				SPAN total weight
			CPL kgs	DEFLECTION mm	TPL kgs	QPL kgs	
3 (no join)	756	7	1172	5	879	586	16
3 (with join)	756	7	1172	5	879	586	17.5
4	437	11	874	9	672	437	23
5	278	18	694	14	520	347	28
6	191	26	574	17	430	287	33.5
7	139	35	487	28	365	243	40
8	105	45	421	37	315	210	45.5
9	81	56	368	46	276	185	51
10	65	70	327	57	244	163	57.5
11	53	84	291	69	181	146	63
12	43	99	261	83	155	131	68

LOAD TABLE GUIDELINES

- *Loading figures are only valid for static loads.
- *Loading figures are only valid for single spans with supports at both ends.
- *All static systems, other than single spans, need an individual structural calculation. Please contact a structural engineer or call CLSA for further assistance.
- *Loading figures are calculated according to and in full compliance with Australian Standards.
- *The self-weight of the trusses is already taken into account
- *Loading figures are only valid for the cross sectional orientation of the truss as shown by the icon in the loading table.
- *The interaction between bending moment and shear force at the connection point is already taken into account.
- *Truss spans can be assembled from different truss lengths.
- *CLSA recommends a 15% deduction on allowable loadings for repetitive use truss.