

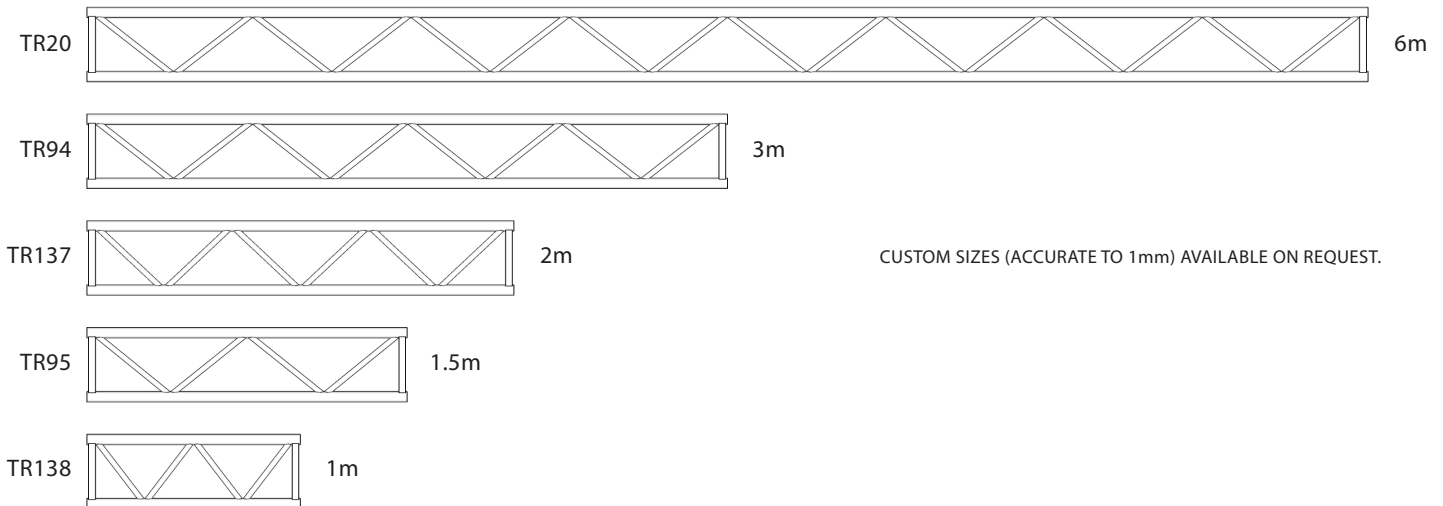
# CLS HEAVY-DUTY FLAT-TRUSS

TR20 TR94 TR95 TR137 TR138

## FEATURES:

CLS 300mm HEAVY-DUTY TRUSS IS DESIGNED FOR A COMBINATION OF SIMPLE FIXTURES AND BASIC MOVING FIXTURES (COLOUR-SCROLLERS ETC) IN A THEATRE CONTEXT. IT'S MADE FROM STRONGER SCAFFOLD-TUBE AND THE SAME WEBBING AS OUR 400 & 500mm BOX TRUSS PRODUCTS.

NOTE: • PICKUP NO MORE THAN EVERY FOUR METRES. SEE HANGING-BRACKETS PAGE FOR OPTIONS THAT BEST-GRIP THE TRUSS SAFELY FOR INSTALLATION AND ALSO MINIMISE LEAN AND SWINGING.  
• FLAT-TRUSS IS ONLY STRUCTURAL WHEN KEPT AS CLOSE TO PERFECTLY VERTICAL AS PRACTICAL. IT MUST NOT BE USED HORIZONTALLY, OR HUNG FROM ANY FITTING THAT RENDERS IT OFF-AXIS. KEEP HEAVIER LOADS AS CLOSE AS POSSIBLE TO PICKUP-POINTS - THESE HELP KEEP THE TRUSS LEVEL AND RIGID. IF FLAT-TRUSS BEGINS TO BOW, DE-RIG IMMEDIATELY, AS IT BECOMES NO STRONGER THAN THE CHORD MATERIAL. RE-RIG ONLY ONCE IT HAS RETURNED TO ZERO-DEFLECTION.



CUSTOM SIZES (ACCURATE TO 1mm) AVAILABLE ON REQUEST.

©2008 CLSA PTY. LTD.

63-65 KINGSWAY, SOUTHBANK VIC 3006  
ph 03 9682 6111 fax 03 9682 6777

info@clsa.com.au

60 EPSOM ROAD, ROSEBERY NSW 2018  
ph 02 9697 2500 fax 02 9697 2522

ABN 14 005 422 319



CONCERT LIGHTING SYSTEMS AUSTRALIA