

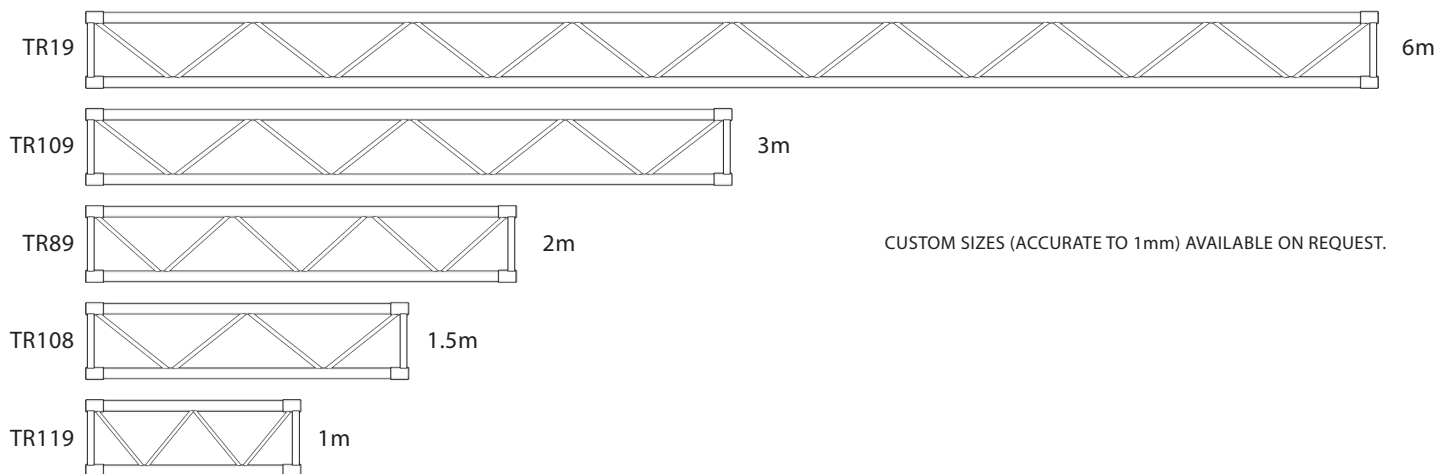
CLS LIGHT-DUTY FLAT-TRUSS

TR19 TR89 TR108 TR109 TR119

FEATURES:

CLS 300mm LIGHT-DUTY FLAT-TRUSS IS IDEAL FOR SIMPLE FIXTURES IN A LIGHTING GALLERY, DRAPE-SUPPORT, OR TO SUPPORT SIMPLE FIXTURES & SCENERY BETWEEN ELEMENTS OF LARGER RIGS.

NOTE: • FLAT-TRUSS IS ONLY STRUCTURAL WHEN KEPT AS CLOSE TO PERFECTLY VERTICAL AS PRACTICAL. IT MUST NOT BE USED HORIZONTALLY, OR HUNG FROM ANY FITTING THAT RENDERS IT OFF-AXIS. KEEP HEAVIER LOADS AS CLOSE AS POSSIBLE TO PICKUP-POINTS - THESE HELP KEEP THE TRUSS LEVEL AND RIGID. IF FLAT-TRUSS BEGINS TO BOW, DE-RIG IMMEDIATELY, AS IT BECOMES NO STRONGER THAN THE CHORD MATERIAL. RE-RIG ONCE IT HAS RETURNED TO ZERO-DEFLECTION.



CUSTOM SIZES (ACCURATE TO 1mm) AVAILABLE ON REQUEST.

©2008 CLSA PTY. LTD.

63-65 KINGSWAY, SOUTHBANK VIC 3006
ph 03 9682 6111 fax 03 9682 6777

info@clsa.com.au

60 EPSOM ROAD, ROSEBERY NSW 2018
ph 02 9697 2500 fax 02 9697 2522

ABN 14 005 422 319



CONCERT LIGHTING SYSTEMS AUSTRALIA