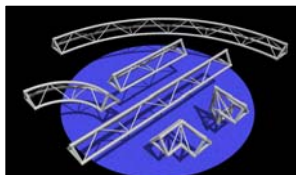
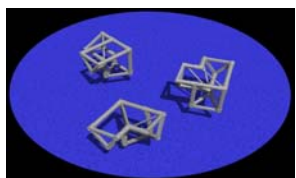


Product Code	Product Description		Trade Ex-GST	Trade Inc-GST
1. CLS ALLOY TRUSS				
<u>ALLOY FLAT TRUSS (300mm C-C)</u>				
<u>ALLOY TUBE (50 x 3 mm)</u>				
TR19	6m Alloy Flat Truss	(300mm C-C)	618.00	679.80
TR109	3m Alloy Flat Truss	(300mm C-C)	457.00	502.70
TR89	2m Alloy Flat Truss	(300mm C-C)	403.50	443.85
TR108	1.5m Alloy Flat Truss	(300mm C-C)	376.00	413.60
TR119	1m Alloy Flat Truss	(300mm C-C)	349.50	384.45
PINS & BOLTS				
TR38	Truss Pin (2 required per joint) - each		10.00	11.00
TR41	Truss Bolt Set High Tensile (2 required per joint) - each		4.00	4.40
FLAT TRUSS ACCESSORIES				
TR43	Flat Truss Winch Up Adaptor	(300mm C-C)	100.00	110.00
<u>ALLOY FLAT TRUSS HEAVY DUTY (300mm C-C)</u>				
<u>(SCAFFOLD TUBE (48.4 X 4.45mm))</u>				
TR20	6m Alloy Flat Truss Heavy Duty	(300mm C-C)	618.00	679.80
TR94	3m Alloy Flat Truss Heavy Duty	(300mm C-C)	457.00	502.70
TR137	2m Alloy Flat Truss Heavy Duty	(300mm C-C)	403.50	443.85
TR95	1.5m Alloy Flat Truss Heavy Duty	(300mm C-C)	376.00	413.60
TR138	1m Alloy Flat Truss Heavy Duty	(300mm C-C)	349.50	384.45
PINS & BOLTS				
TR96	Truss Pin (2 required per joint) - each		12.00	13.20
TR41	Truss Bolt Set High Tensile (2 required per joint) - each		4.00	4.40
<u>ALLOY TRI TRUSS (250mm C-C)</u>				
TR122	3m Tri Truss Section	(250mm C-C)	645.00	709.50
TR80	2m Tri Truss Section	(250mm C-C)	516.00	567.60
TR81	1m Tri Truss Section	(250mm C-C)	387.00	425.70
PINS & BOLTS				
TR38	Truss Pin (3 required per joint) - each		10.00	11.00
TR41	Truss Bolt High Tensile (4 required per joint) - each		4.00	4.40
<u>ALLOY TRI TRUSS LIGHT DUTY (300mm C-C)</u>				
TR30	6m Tri Truss Light Duty	(300mm C-C)	925.00	1,017.50
TR31	5m Tri Truss Light Duty	(300mm C-C)	795.00	874.50
TR32	4m Tri Truss Light Duty	(300mm C-C)	666.00	732.60
TR33	3m Tri Truss Light Duty	(300mm C-C)	537.00	590.70
TR34	2m Tri Truss Light Duty	(300mm C-C)	409.00	449.90
TR35	1m Tri Truss Light Duty	(300mm C-C)	280.00	308.00
TR36	0.5m Tri Truss Light Duty	(300mm C-C)	215.00	236.50
PINS & BOLTS				
TR39	Truss Pin (3 required per joint) - each		21.50	23.65
TR42	Truss Bolt Set High Tensile (4 required per joint) - each		4.50	4.95
ACCESSORIES				
TR45	Wall Plate	(300mm C-C)	150.00	165.00
<u>ALLOY TRI TRUSS LIGHT DUTY (450mm C-C)</u>				
TR26	6m Tri Truss Light Duty	(450mm C-C)	993.00	1,092.30
TR67	4.8m Tri Truss Light Duty	(450mm C-C)	825.00	907.50
TR68	3.6m Tri Truss Light Duty	(450mm C-C)	658.00	723.80
TR69	2.4m Tri Truss Light Duty	(450mm C-C)	490.00	539.00
TR70	1.2m Tri Truss Light Duty	(450mm C-C)	323.00	355.30

Product Code	Product Description		Trade Ex-GST	Trade Inc-GST
(ALLOY TRI TRUSS LIGHT DUTY (450mm C-C) CONTD)				
CORNERS				
TR28	90° Tri Truss Corner Light Duty	(450mm C-C)	571.00	628.10
TR29	T Section for Tri Truss Light Duty	(450mm C-C)	689.00	757.90

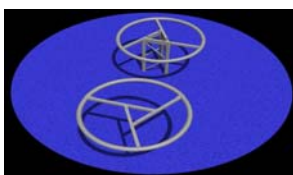
ALLOY TRI TRUSS (300mm C-C)

TR73	6m Tri Truss Section	(300mm C-C)	920.00	1,012.00
TR123	5m Tri Truss Section	(300mm C-C)	820.00	902.00
TR124	4m Tri Truss Section	(300mm C-C)	715.00	786.50
TR23	3m Tri Truss Section	(300mm C-C)	600.00	660.00
TR91	2.5m Tri Truss Section	(300mm C-C)	551.00	606.10
TR54	2.25m Tri Truss Section	(300mm C-C)	520.00	572.00
TR82	2m Tri Truss Section	(300mm C-C)	490.00	539.00
TR24	1.5m Tri Truss Section	(300mm C-C)	430.00	473.00
TR83	1m Tri Truss Section	(300mm C-C)	370.00	407.00
TR84	.75m Tri Truss Section	(300mm C-C)	340.00	374.00
TR134	0.5m Tri Truss Section	(300mm C-C)	310.00	341.00
CORNERS				
TR65	90° Vertical Corner (Apex Up)	(300mm C-C)	538.00	591.80
TR66	90° Vertical Corner (Apex Down)	(300mm C-C)	538.00	591.80
TR53	90° Horizontal Corner	(300mm C-C)	538.00	591.80
TR163	60° Horizontal Corner	(300mm C-C)	675.00	742.50
TR78	45° Horizontal Corner	(300mm C-C)	812.00	893.20
TR79	135° Horizontal Corner	(300mm C-C)	538.00	591.80

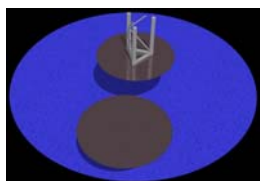


TR92	3 Way Corner (Right)	(300mm C-C)	774.00	851.40
TR93	3 Way Corner (Left)	(300mm C-C)	774.00	851.40
TR25	Snaplok Joiner (Apex Down)	(300mm C-C)	355.00	390.50
TR164	Snaplok Joiner (Apex Up)	(300mm C-C)	355.00	390.50
TR64	Hinged Joiner (Steel)	(300mm C-C)	378.00	415.80
TR72	Alloy 6 Way Cube	(300mm C-C)	600.00	660.00
TR102	T - Section (Horizontal)	(300mm C-C)	645.00	709.50
TR75	T - Section (Apex Down)	(300mm C-C)	645.00	709.50
TR76	4 Way Cross Section	(300mm C-C)	850.00	935.00
TR103	Universal Hinge Joiner (Steel) (Suits Tri & Box Truss)	(300mm C-C)	360.00	396.00
TR182	Universal Hinge Joiner (Steel) (Suits Tri Truss Only)	(300mm C-C)	240.00	264.00

Product Code	Product Description		Trade Ex-GST	Trade Inc-GST
(ALLOY TRI TRUSS (300mm C-C) CONT'D)				
HOKKER CORNERS				
TR150	Tri Truss Hokker Corner (Left)	(300mm C-C)	850.00	935.00
TR151	Tri Truss Hokker Corner (Right)	(300mm C-C)	850.00	935.00
TR152	Tri Truss Hokker Corner (Top)	(300mm C-C)	950.00	1,045.00
TR153	Tri Truss Hokker Footing Screw Jack Adaptor	(300mm C-C)	160.00	176.00

TRI TRUSS BASES & ACCESSORIES

TR74	Linton Ring (To suit Alloy Tri Truss) 1m Dia. (See Above)	(300mm C-C)	323.00	355.30
TR165	Hanging Plate (Apex Down) Chrome Plated	(300mm C-C)	150.00	165.00
TR166	Hanging Plate (Apex Up) Chrome Plated	(300mm C-C)	150.00	165.00
TR44	Tri Truss Winch Up Adaptor	(300mm C-C)	100.00	110.00
TR111	Suspension Bracket	(300mm C-C)	403.00	443.30
TR167	Universal Square Truss Base(600 x 600 x 6mm) suits Tri & Box Truss	(300mm C-C)	250.00	275.00
TR183	Universal Square Truss Base(1000 x 1000 x 6mm) suits Tri & Box Truss	(300mm C-C)	350.00	385.00



TR56	Universal Round Truss Base (1000 x 6mm) Suits Tri & Box Truss	(300mm C-C)	312.00	343.20
------	---	-------------	--------	--------

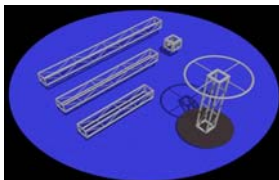
PINS & BOLTS

TR38	Truss Pin (3 required per join) - each		9.00	9.90
TR41	Truss Bolt High Tensile (4 required per join) - each		4.00	4.40
TR88	Truss Cube Bolt		4.00	4.40
TR71	Tri Truss Base Bolt & Washer		2.00	2.20

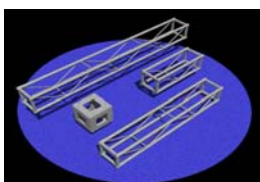
CURVED ALLOY TRI TRUSS (300mm C-C)

CT05	7.5m Radius Curved Section (15m dia. 30 deg) (Price per Section)	(12 Parts to Circle)	1,323.00	1,455.30
CT03	5m Radius Curved Section (10m dia. 45 deg) (Price per Section)	(8 Parts To Circle)	1,323.00	1,455.30
CT08	4m Radius Curved Section (8m dia. 45 deg) (Price per Section)	(8 Parts To Circle)	1,134.00	1,247.40
CT02	3.5m Radius Curved Section (7m dia. 90 deg) (Price per Section)	(4 Parts To Circle)	1,701.00	1,871.10
CT04	3m Radius Curved Section (6m dia. 90 deg) (Price per Section)	(4 Parts To Circle)	1,512.00	1,663.20
CT09	2.5m Radius Curved Section (5m dia. 90 deg) (Price per Section)	(4 Parts To Circle)	1,323.00	1,455.30
CT01	2m Radius Curved Section (4m dia. 90 deg) (Price per Section)	(4 Parts To Circle)	1,134.00	1,247.40
CT07	1.5m Radius Curved Section (3m dia. 90 deg) (Price per Section)	(4 Parts To Circle)	992.25	1,091.48
CT06	1m Radius Curved Section (2m dia. 90 deg) (Price per Section)	(4 Parts To Circle)	850.50	935.55

Product Code	Product Description		Trade Ex-GST	Trade Inc-GST
<u>ALLOY BABY BOX TRUSS (144mm C-C)</u>				
TR154	4m Alloy Box Truss Section	(144mm C-C)	421.50	463.65
TR155	3m Alloy Box Truss Section	(144mm C-C)	371.50	408.65
TR156	2m Alloy Box Truss Section	(144mm C-C)	321.50	353.65
TR157	1.5m Alloy Box Truss Section	(144mm C-C)	271.50	298.65
TR158	1m Alloy Box Truss Section	(144mm C-C)	221.50	243.65
TR159	0.5m Alloy Box Truss Section	(144mm C-C)	171.50	188.65

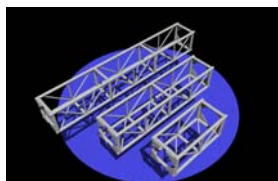


CORNERS & BASE PLATES				
TR160	Alloy 6 Way Cube		345.00	379.50
TR161	Linton Ring 650mm Diameter		293.00	322.30
TR162	Base Plate 650mm Diameter		250.00	275.00
BOLTS				
TR185	Bolt Set (includes bolt, 3 washers & wing nut)		4.00	4.40

ALLOY BOX TRUSS (300mm C-C)

TR125	4m Alloy Box Truss Section	(300mm C-C)	830.00	913.00
TR126	3m Alloy Box Truss Section	(300mm C-C)	700.00	770.00
TR139	2.5m Alloy Box Truss Section	(300mm C-C)	660.00	726.00
TR149	2.25m Alloy Box Truss Section	(300mm C-C)	635.00	698.50
TR127	2m Alloy Box Truss Section	(300mm C-C)	605.00	665.50
TR27	1.5m Alloy Box Truss Section	(300mm C-C)	550.00	605.00
TR128	1m Alloy Box Truss Section	(300mm C-C)	490.00	539.00
TR141	0.75m Alloy Box Truss Section	(300mm C-C)	465.00	511.50
TR129	0.5m Alloy Box Truss Section	(300mm C-C)	435.00	478.50
PINS & BOLTS				
TR38	Truss Pin (4 required per join) - each		9.00	9.90
TR41	Truss Bolt High Tensile (4 required per join) - each		4.00	4.40
TR88	Truss Cube Bolt		4.00	4.40
TR71	Tri Truss Base Bolt & Washer		2.00	2.20
CORNERS				
TR140	Alloy 6 Way Cube	(300mm C-C)	600.00	660.00
TR130	Hinge Joiner (Steel)	(300mm C-C)	409.00	449.90
TR168	90 Deg Horizontal Corner	(300mm C-C)	628.00	690.80
TR177	90 Deg Vertical Corner	(300mm C-C)	628.00	690.80
TR175	T - Section Horizontal	(300mm C-C)	753.00	828.30
TR176	4 Way Cross Joiner	(300mm C-C)	924.00	1,016.40
BOX TRUSS ACCESSORIES				
TR56	Universal Truss Base (Steel 1m Dia.) Also suits Tri Truss	(300mm C-C)	312.00	343.20
TR111	Suspension Bracket	(300mm C-C)	403.00	443.30

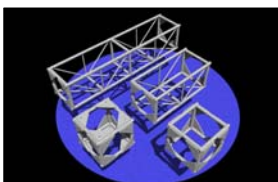
Product Code	Product Description		Trade Ex-GST	Trade Inc-GST
(ALLOY BOX TRUSS (300mm C-C) CONT'D)				
<u>CURVED ALLOY BOX TRUSS (300MM C-C)</u>				
CT10	3m Radius Curved Section (6m dia. 90 deg) (Price per Section)	(4 Parts To Circle)	1,656.00	1,821.60
CT11	2m Radius Curved Section (4m dia. 90 deg) (Price per Section)	(4 Parts To Circle)	1,260.00	1,386.00
CT12	1.5m Radius Curved Section (3m dia. 90 deg) (Price per Section)	(4 Parts To Circle)	1,161.00	1,277.10
CT13	1m Radius Curved Section (2m dia. 90 deg) (Price per Section)	(4 Parts To Circle)	1,062.00	1,168.20

ALLOY BOX TRUSS (400MM C-C)

TR131	6m Box Truss Heavy Duty	(400mm C-C)	1,802.00	1,982.20
TR132	5m Box Truss Heavy Duty	(400mm C-C)	1,592.00	1,751.20
TR118	4m Box Truss Heavy Duty	(400mm C-C)	1,382.00	1,520.20
TR117	3m Box Truss Heavy Duty	(400mm C-C)	1,173.00	1,290.30
TR116	2m Box Truss Heavy Duty	(400mm C-C)	963.00	1,059.30
TR181	1.5m Box Truss Heavy Duty	(400mm C-C)	858.50	944.35
TR115	1m Box Truss Heavy Duty	(400mm C-C)	754.00	829.40
TR135	6 Way Joiner Heavy Duty	(400mm C-C)	1,272.00	1,399.20

PINS & BOLTS

TR100	Truss Bolt High Tensile (4 required per join) - each		4.00	4.40
ACCESSORIES				
TR112	Suspension Bracket	(400mm C-C)	430.00	473.00

ALLOY BOX TRUSS (500mm C-C)

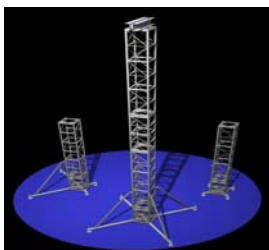
TR104	3m Box Truss Heavy Duty	(500mm C-C)	1,371.00	1,508.10
TR105	2m Box Truss Heavy Duty	(500mm C-C)	1,124.00	1,236.40
TR173	1.5m Box Truss Heavy Duty	(500mm C-C)	1,045.50	1,150.05
TR106	1m Box Truss Heavy Duty	(500mm C-C)	922.00	1,014.20
TR180	0.5m Box Truss Heavy Duty	(500mm C-C)	798.50	878.35
TR97	8ft Box Truss Heavy Duty	(500mm C-C)	1,180.00	1,298.00
TR178	6ft Box Truss Heavy Duty	(500mm C-C)	1,082.00	1,190.20
TR98	4ft Box Truss Heavy Duty	(500mm C-C)	904.00	994.40
TR179	2ft Box Truss Heavy Duty	(500mm C-C)	766.00	842.60
TR99	4 Way Joiner Heavy Duty	(500mm C-C)	1,136.00	1,249.60
TR107	6 Way Joiner Heavy Duty	(500mm C-C)	1,484.00	1,632.40
TR136	Hinge Joiner (Alloy)	(500mm C-C)	847.00	931.70
PINS & BOLTS				
TR100	Truss Bolt High Tensile (4 required per join) - each		4.00	4.40

Product Code	Product Description		Trade Ex-GST	Trade Inc-GST
<u>ALLOY STACKING TRUSS 500MM</u>				
TR169	1m Alloy Stacking Truss Section	(500mm C-C)	1,056.00	1,161.60
TR170	2m Alloy Stacking Truss Section	(500mm C-C)	1,248.00	1,372.80
TR171	3m Alloy Stacking Truss Section	(500mm C-C)	1,400.00	1,540.00
TR172	4 Way Corner	(500mm C-C)	1,200.00	1,320.00
TR173	Brace Bar 500mm	(500mm C-C)	108.00	118.80
<u>ALLOY BOX TRUSS HEAVY DUTY (570mm C-C)</u>				
TR59	5 Way Joiner Heavy Duty	(570mm C-C)	1,419.00	1,560.90
TR57	2.4m Box Truss Heavy Duty	(570mm C-C)	1,245.00	1,369.50
TR58	1.2m Box Truss Heavy Duty	(570mm C-C)	1,017.00	1,118.70
PINS & BOLTS				
TR60	Truss Pin (4 required per join) - each		18.75	20.63
TR61	Truss R Clip		0.45	0.50
<u>ALLOY FOLDING TRUSS HEAVY DUTY</u>				
TR120	3m Alloy Folding Truss	(450mm C-C)	2,010.00	2,211.00
TR121	2m Alloy Folding Truss	(450mm C-C)	1,656.00	1,821.60
PINS & BOLTS				
TR60	Truss Pin (4 required per join) - each		18.75	20.63
TR61	R Clip		0.45	0.50
FOLDING TRUSS ACCESSORIES				
TR113	Suspension Bracket	(450mm C-C)	484.00	532.40

2. CLS GROUND SUPPORT

<u>ALLOY BOX TRUSS 500MM C-C</u>				
GS01	4 Way Trolley Section	(500mm C-C)	1,875.00	2,062.50
GS02	Lifting Plates	(500mm C-C)	150.00	165.00

ALLOY BOX TRUSS TOWER 400MM C-C



GS03	3m Tower Design Section c/w couplings	(400mm C-C)	1,630.00	1,793.00
GS04	0.7m Tower Design Section c/w couplings	(400mm C-C)	1,130.00	1,243.00
GS18	3m Tower Design Section	(400mm C-C)	1,323.00	1,455.30
GS19	2m Tower Design Section	(400mm C-C)	1,063.00	1,169.30
GS20	1.5m Tower Design Section	(400mm C-C)	933.50	1,026.85
GS21	1m Tower Design Section	(400mm C-C)	804.00	884.40

Product Code	Product Description	Trade Ex-GST	Trade Inc-GST
(GROUND SUPPORT CONT'D)			
GS05	Flat Head Pins & R Clips	18.75	20.63
GS07	Steel Bases c/w 100mm Castors	750.00	825.00
GS06	0.5m Short Leg c/w 1 Swivel Foot	200.00	220.00
GS08	1.5m Legs c/w 2 Swivel Feet	375.00	412.50
GS09	Alloy Braces c/w Coupler & Pin	290.60	319.66
GS10	Alloy Cat Heads	950.00	1,045.00
GS11	M16 Bolt Sets	6.00	6.60
TR60	Truss Pin & R Clip	18.75	20.63

ALLOY BOX TRUSS TOWER 300MM C-C

GS12	4 Way Trolley Section	(300mm C-C)	P.O.A.	P.O.A.
GS13	3m Section c/w couplings	(300mm C-C)	P.O.A.	P.O.A.
GS14	0.7m Section c/w couplings	(300mm C-C)	P.O.A.	P.O.A.
GS15	Steel Bases c/w 100mm Castors & Winch	(300mm C-C)	P.O.A.	P.O.A.
GS16	4 x 1m Short Leg c/w 1 Swivel Foot	(300mm C-C)	P.O.A.	P.O.A.
GS17	Alloy Cat Heads	(300mm C-C)	P.O.A.	P.O.A.

3. CLS STEEL TRUSS**STEEL FLAT WEB TRUSS (12"C-C)**

TR86	20ft Flat Web Truss Section	(12"C-C)	538.00	591.80
TR01	12ft Flat Web Truss Section	(12"C-C)	376.00	413.60
TR02	10ft Flat Web Truss Section	(12"C-C)	336.00	369.60
TR03	8ft Flat Web Truss Section	(12"C-C)	296.00	325.60
TR04	4ft Flat Web Truss Section	(12"C-C)	215.00	236.50
TR05	90 Degree Flat Truss Joiner	(12"C-C)	136.00	149.60
TR07	4 Way Flat Truss Joiner	(12"C-C)	257.00	282.70
TR06	3 Way Flat Truss Joiner	(12"C-C)	193.00	212.30

STEEL BOX TRUSS (18"C-C)

TR12	20ft Box Truss Section	(18" C-C)	1,381.60	1,519.76
TR13	16ft Box Truss Section	(18" C-C)	1,164.90	1,281.39
TR14	12ft Box Truss Section	(18" C-C)	947.10	1,041.81
TR15	10ft Box Truss Section	(18" C-C)	841.50	925.65
TR16	8ft Box Truss Section	(18" C-C)	729.30	802.23
TR17	4ft Box Truss Section	(18" C-C)	510.40	561.44
TR55	2ft Box Truss Section	(18" C-C)	405.90	446.49

CORNERS

TR18	90 Degree Box Truss Joiner	(18" C-C)	552.20	607.42
TR77	45 Degree Box Truss Joiner	(18" C-C)	594.00	653.40
TR85	Hinged Box Truss Joiner	(18" C-C)	721.60	793.76
TR21	Universal Box Truss Joiner	(18" C-C)	1,089.00	1,197.90
TR22	T Section for Box Truss	(18" C-C)	947.10	1,041.81
TR62	4 Way Box Truss Joiner	(18" C-C)	676.50	744.15
TR63	5 Way Box Truss Joiner	(18" C-C)	751.30	826.43

PINS & BOLTS

TR37	Truss Pin (4 required per join) - each	(18" C-C)	17.20	18.92
TR40	Truss Bolt High Tensile (4 required per join) - each	(18" C-C)	3.00	3.30

Product Code	Product Description		Trade Ex-GST	Trade Inc-GST
<u>STEEL TRI TRUSS LIGHT DUTY (136mm C-C)</u>				
TR142	4m Tri Truss Light Duty	(136mm C-C)	300.00	330.00
TR143	3m Tri Truss Light Duty	(136mm C-C)	240.00	264.00
TR144	2m Tri Truss Light Duty	(136mm C-C)	175.00	192.50
TR145	1m Tri Truss Light Duty	(136mm C-C)	125.00	137.50
TR146	0.5m Tri Truss Light Duty	(136mm C-C)	80.00	88.00
CORNERS				
TR147	90° Tri Truss Corner Light Duty	(136mm C-C)	85.00	93.50
TR148	Mini Base (steel)	(136mm C-C)	100.00	110.00
<u>STEEL BOX TRUSS LIGHT DUTY (200mm O.D.)</u>				
TR47	4m Box Truss Light Duty	(200mm O.D.)	300.00	330.00
TR48	3m Box Truss Light Duty	(200mm O.D.)	240.00	264.00
TR49	2m Box Truss Light Duty	(200mm O.D.)	175.00	192.50
TR50	1m Box Truss Light Duty	(200mm O.D.)	125.00	137.50
TR51	0.5m Box Truss Light Duty	(200mm O.D.)	80.00	88.00
CORNERS				
TR52	90° Box Truss Corner Light Duty	(200mm O.D.)	85.00	93.50
TR101	Mini Base (steel)		100.00	110.00

4. DRAPE SUPPORT SYSTEM

DS01	Telescopic Uprights (Vertical) 1m - 1.5m		147.00	161.70
DS02	Telescopic Uprights (Vertical) 2.4m - 4m		190.00	209.00
DS03	Telescopic Uprights (Vertical) 2.4m - 6m		300.00	330.00
DS04	Telescopic Crossbars (Horizontal) 1m - 1.5m		90.00	99.00
DS05	Telescopic Crossbars (Horizontal) 1.8m - 3m		129.00	141.90
DS06	Black Base Plates 200 x 360 x 5mm		33.00	36.30
DS07	Black Base Plates 450 x 450 x 5mm		66.00	72.60
DS08	Black Base Plates 600 x 600 x 5mm		93.00	102.30
DS09	Spigot & Screw Assembly		16.00	17.60



5. STANDS & ACCESSORIES

<u>PUSH UP STAND</u>				
ST03	Push Up Stand Heavy Duty (complete upright & base)	(1.85m - 3.30m)	237.00	260.70
ST58	Push Up Stand Heavy Duty (complete upright & base)	(1.25m - 2.2m)	215.00	236.50
ST80	"NEW" Push Up Stand Light Duty (complete upright & base)	(1.85m - 2.4m)	160.00	176.00
<u>PUSH UP STAND WITH STEEL SQUARE FLAT BASE</u>				
ST89	Push Up Stand H/D c/w Flat Square Steel Base 3.3m	(1.85m - 3.30m)	300.00	330.00
ST90	Push Up Stand H/D c/w Flat Square Steel Base 2.2m	(1.25m - 2.2m)	280.00	308.00
<u>PUSH UP STAND ACCESSORIES</u>				
ST47	Pole for Push Up Stand 3.30m (Outer & Inner Poles)		154.00	169.40
ST88	Pole for Push Up Stand 2.2m (Outer & Inner Poles)		132.00	145.20
ST36	Base for 3.3m Push Up Stand		130.00	143.00
ST52	Insert Pole for Push Up Stand		54.00	59.40
ST60	Feet to suit Push Up Stand		3.25	3.58
ST51	Square Base Plate for Push Up Stand / w/o 40N.B. Adaptor	(600 x 600 x 6)	160.00	176.00
ST79	40N.B. Adaptor to suit Square Plate for Push Up		45.00	49.50

Product Code	Product Description		Trade Ex-GST	Trade Inc-GST
(STAND & ACCESSORIES CONTD)				
<u>T BARS</u>				
ST50	1.5m T Bar (c/w 25mm Spigot)		43.00	47.30
ST68	1.0m T Bar (c/w 25mm Spigot)		41.00	45.10
<u>FOLLOWSPOT STAND</u>				
ST40	Followspot Stand	(1.00m - 1.70m)	355.00	390.50
<u>FOLLOWSPOT STAND ACCESSORIES</u>				
ST61	Insert Pole for Followspot Stand		108.00	118.80
<u>WINCH UP STANDS</u>				
ST04	4m (13ft) Winch Up Stand	(Maximum Load 100Kg)	753.00	828.30
<u>WINCH UP STAND ACCESSORIES & PARTS</u>				
ST05	Winch Up T Piece	(Straight)	37.00	40.70
ST06	Winch Up T Piece	(Offset)	37.00	40.70
ST18	Clamp Ring to suit 4m Winch Up Stand		22.00	24.20
ST07	Winch	(DL-900)	58.00	63.80
ST48	Winch with Brake	(DLB - 800)	122.00	134.20
ST34	Winch Latch		9.15	10.07
ST35	Winch Spring		4.00	4.40
ST63	Angled Plastic Foot		2.15	2.37
ST81	Sliding Brace Bracket		36.00	39.60
TR44	Tri Truss Winch Up Adaptor (Truss Fork)		100.00	110.00
ST50	1.5m T Bar (c/w 25mm Spigot)		43.00	47.30
<u>VMB TOWER LIFTS</u>				
ST78	VMB Tower Lift - Model TE-064Pro (Max Height - 5.35m)	((Maximum Load 100kg)	2,112.31	2,323.54
ST77	VMB Tower Lift - Model TE-076Pro (Max Height - 6.5m)	((Maximum Load 200kg)	3,059.00	3,364.90
<u>CLS FLOOR STANDS</u>				
ST01	Floor Stand - (Square Tube) - Black	(Square Tube)	21.00	23.10
ST91	Floor Stand - (Square Tube) - Chrome	(Square Tube)	26.00	28.60
ST02	Floor Stand - (Round Tube) - Black	(Round Tube)	21.00	23.10
ST92	Floor Stand - (Round Tube) - Chrome	(Round Tube)	26.00	28.60
<u>TRI WHEELS</u>				
ST08	Tri Wheel	(3/8" BSW)	1.20	1.32
ST09	Tri Wheel	(5/16" BSW)	1.20	1.32
ST10	Tri Wheel	(1/4" BSW)	1.20	1.32

Product Code	Product Description		Trade Ex-GST	Trade Inc-GST
6. CLS RIGGING ACCESSORIES				
<u>SPIGOTS</u>				
ST41	3/8" BSW Spigot (Chrome Plated)	(100 x 19mm)	15.50	17.05
ST11	1/2" UNC Spigot (Chrome Plated)	(100 x 25mm)	15.50	17.05
ST12	3/8" BSW Spigot (Chrome Plated)	(100 x 25mm)	15.50	17.05
ST62	10mm Spigot (Chrome Plated)	(100 x 25mm)	15.50	17.05
ST64	TV Spigot	(1 1/8" x 1/2" BSW)	22.00	24.20
<u>RIGGING EYES</u>				
ST73	M10 Eyebolt		9.50	10.45
ST74	M10 Eyenut		6.70	7.37
ST75	M12 Eyebolt		8.00	8.80
ST87	M12 Eyenut		8.30	9.13
<u>GIRDER CLAMPS</u>				
GC01	1 Tonne Girder Clamp	(Suits Flange 75 - 220mm)	70.00	77.00
GC02	2 Tonne Girder Clamp	(Suits Flange 75 - 220mm)	84.00	92.40
GC03	3 Tonne Girder Clamp	(Suits Flange 100 - 250mm)	126.00	138.60
GC04	5 Tonne Girder Clamp	(Suits Flange 125 - 270mm)	150.00	165.00
<u>ROUND SLINGS</u>				
RS01	1m Span Set - Black	(2 Tonne)	17.00	18.70
RS02	2m Span Set - Black	(2 Tonne)	27.00	29.70
RS03	3m Span Set - Black	(2 Tonne)	47.00	51.70
RS04	4m Span Set - Black	(2 Tonne)	57.00	62.70
<u>BOW SHACKLES</u>				
ST65	3 1/4 Tonne Bow Shackles		12.00	13.20
ST69	2 Tonne Bow Shackles		10.00	11.00
ST46	1 Tonne Bow Shackles		5.00	5.50
ST17	1/2 Tonne Bow Shackles		3.00	3.30
ST27	3/4 Tonne Bow Shackles		4.00	4.40
<u>ALLOY/STEEL TUBE</u>				
ST15	Galvanised Steel Tube per metre	(48.3 x 2.3 mm)	9.00	9.90
ST16	Alloy Tube per metre	(50.00 x 3.00mm)	14.00	15.40
ST42	Alloy Scaffold Tube per metre	(48.4 x 4.47mm)	17.20	18.92
ST93	Black Anodised Scaff Tube per metre		22.00	24.20
<u>PAR BARS/BOLT SETS</u>				
CL09	Par Bar (Black)	(4 x Lamp)	21.50	23.65
CL15	Par Bar (Chrome)	(4 x Lamp)	32.00	35.20
CL23	Par Bar (Black)	(2 x Lamp)	13.00	14.30
CL21	Bolt Sets (inc. Wing Nut & 3 Washers)	(3/8" BSW)	1.20	1.32
<u>DROPPER BARS</u>				
ST23	4m Dropper Bar	(Heavy Duty Chrome)	237.00	260.70
ST24	3m Dropper Bar	(Heavy Duty Chrome)	204.00	224.40
ST25	2m Dropper Bar	(Heavy Duty Chrome)	172.00	189.20
ST53	1.5m Dropper Bar	(Heavy Duty Chrome)	140.00	154.00
ST26	1m Dropper Bar	(Heavy Duty Chrome)	108.00	118.80
ST37	0.5m Dropper Bar	(Heavy Duty Chrome)	75.00	82.50
ST38	0.3m Dropper Bar	(Heavy Duty Chrome)	65.00	71.50

Product Code	Product Description		Trade Ex-GST	Trade Inc-GST
(CLS RIGGING ACCESSORIES CONT'D)				
<u>STEEL RIGGING BOXES</u>				
ST94	Steel Rigging Box Small (55 x 22.5 x 22cm)		30.00	33.00
ST95	Steel Rigging Box Large (77 x 34 x 26cm)		60.00	66.00
<u>COUPLERS</u>				
ST31	Single Coupler	(Pressed)	15.00	16.50
ST32	Swivel Coupler	(Forged)	22.00	24.20
ST33	Double Coupler 90 deg	(Forged)	20.00	22.00
ST76	KUPO Trigger Clamp / Heavy Duty		44.55	49.01
ST70	KUPO Alloy Single Coupler		40.50	44.55
ST96	Alloy Single Coupler (25mm) To Suit Alloy Baby Box Truss		29.00	31.90
ST71	Alloy Single Coupler (Rated @ 500Kg)		31.00	34.10
ST14	Alloy 90 deg Fixed Coupler (Rated @ 500Kg)		60.00	66.00
ST28	Alloy Swivel Coupler (Rated @ 500Kg)		60.00	66.00
ST82	Alloy Coupler c/w Rigging Eye		74.00	81.40
ST30	External Pipe Joiner		20.00	22.00
ST97	Internal Pipe Joiner		20.00	22.00
<u>SAFETY WIRES</u>				
<u>Safety Wires Rated @ 50Kg</u>				
ST55	"NEW" 50cm Safety Wire c/w Snaphook Rated @ 50Kg <i>(The 50cm Safety Wire can be used on smaller fixtures & barndoors)</i>	(0.50m x 2mm)	10.00	11.00
ST44	75cm Safety Wire c/w Snaphook Rated @ 50Kg	(0.75m x 3mm)	11.00	12.10
ST98	1m Safety Wire c/w Snaphook Rated @ 50Kg	(1.00m x 3mm)	14.00	15.40
<u>Safety Wires Rated @ 100Kg</u>				
ST72	1m Safety Wire c/w Extra Large Snaphook Rated @ 100Kg	(1.00m x 4mm)	19.00	20.90
ST29	1.5m Safety Wire c/w Extra Large Snaphook Rated @ 100Kg	(1.50m x 4mm)	21.00	23.10
ST20	2m Safety Wire c/w Extra Large Snaphook Rated @ 100Kg	(2.00m x 4mm)	23.00	25.30
ST54	Wire Rope 3mm per metre		2.20	2.42
(Custom sized Safety Wires are also available)				
<u>CHAIN BAGS</u>				
MS05	Chain Block Bags - Standard	(Up to 12m Chain)	48.50	53.35
MS27	Chain Block Bags - Large	(Up to 18m Chain)	120.00	132.00
MS06	Chain Motor Bags - Standard	(Up to 20m Chain)	242.00	266.20
MS19	Chain Motor Bags - Large	(Up to 30m Chain)	269.00	295.90
MS20	Chain Motor Bags - Extra Large	(Up to 37m Chain)	301.00	331.10
<u>SHOT BAGS</u>				
MS14	Shot Bags 10Kg		24.00	26.40
<u>SASH CORD</u>				
MS09	Black Sash Cord (6mm)	(per metre)	2.00	2.20
<u>CABLE TIES</u>				
MS17	Cable Ties (96mm x 2.5mm) (Black & White Available)	(Pack of 100)	6.00	6.60
MS03	Cable Ties (190mm x 4.8mm) (Black & White Available)	(Pack of 100)	9.00	9.90
MS02	Cable Ties (289mm x 4.8mm) (Black & White Available)	(Pack of 100)	12.00	13.20
MS18	Cable Ties (360mm x 4.8mm) (Black & White Available)	(Pack of 100)	16.00	17.60
MS23	Velcro Cable Ties Black - Pkt 20 Ties (19mm x 200mm)	(Pack of 20)	16.00	17.60
MS24	Velcro Cable Ties Black - Pkt. 15 Ties (25mm x 300mm)	(Pack of 15)	19.50	21.45
MS25	Velcro Cable Ties Black - Roll of 100 Ties (19mm x 200mm)	(Roll of 100)	57.40	63.14
MS26	Velcro Cable Ties Black - Roll of 75 Ties (25mm x 300mm)	(Roll of 75)	62.30	68.53

Product Code	Product Description	Trade Ex-GST	Trade Inc-GST
7. CHAIN BLOCKS			
CB01	OZ Chain Block - 1 Ton c/w 6m Lift	240.00	264.00
MS05	Chain Block Bag - (Holds Up To 12m Of Chain)	48.50	53.35
MS27	Chain Block Bag - (Holds Up To 18m Of Chain)	120.00	132.00

8. CLS CUSTOM PLASMA BRACKETS

PB01	Custom Made Projector Brackets	P.O.A.	P.O.A.
------	--------------------------------	--------	--------

9. CLS MOTOR CONTROLLERS

Note: Motor Controllers only supplied with Holsts

MC1	2 Way Motor Controller c/w Pickle	2,150.00	2,365.00
MC2	4 Way Motor Controller c/w Pickle	3,422.00	3,764.20
MC3	8 Way Motor Controller c/w Pickle	4,163.00	4,579.30
MC4	C.M. Pickle c/w EP-4 Connector	258.00	283.80

10. CLS CLAMPS

HOOK CLAMPS

CL01	Hook Clamp c/w 10mm Hole	(19mm Bar)	5.40	5.94
CL02	Hook Clamp c/w 10mm Hole	(25mm Bar)	6.45	7.10
CL12	Hook Clamp c/w 10mm Hole	(32mm Bar)	6.45	7.10
CL03	Hook Clamp c/w 1/2" Hole (SWL 20Kg)	(50mm Bar)	7.10	7.81
CL04	Hook Clamp c/w 10mm Hole (SWL 20Kg)	(50mm Bar)	7.10	7.81
CL25	Hook Clamp (Chrome) c/w 10mm Hole (SWL 10Kg)	(50mm Bar)	6.00	6.60
CL31	Hook Clamp (Straight) c/w 10mm Hole	(50mm Bar)	10.00	11.00
CL08	Hook Clamp c/w 10mm Hole	(75mm Bar)	10.75	11.83
CL21	Bolt Set to suit Hook Clamps (inc. 3 x washers & wing nut)		1.20	1.32

C' HOOKS

CL05	C Hook 150mm	(50 to 50mm Bar)	9.20	10.12
CL06	C Hook 150mm	(25 to 50mm Bar)	10.00	11.00
CL24	C Hook 300mm	(50 to 50mm Bar)	14.00	15.40
CL07	C Hook 600mm	(50 to 50mm Bar)	16.00	17.60
CL22	C Hook 1000mm	(50 to 50mm Bar)	21.50	23.65

HEAVY DUTY HOOK CLAMPS

CL17	Heavy Duty Hook Clamp c/w 10mm hole (SWL 30Kg)	(50mm Bar)	12.00	13.20
CL14	Heavy Duty Hook Clamp c/w 1/2" hole (SWL 30Kg)	(50mm Bar)	12.00	13.20

T.V. CLAMP & ACCESSORIES

CL10	T.V. Barrel Clamp (100kg Rating)	(48mm Bar)	78.00	85.80
CL18	Chain & Pin to suit T.V. Clamp		8.00	8.80
CL19	Lock Handles to suit T.V. Clamp		8.00	8.80
CL26	Turning Handle (Chrome Plated) Threaded		9.00	9.90

Product Code	Product Description		Trade Ex-GST	Trade Inc-GST
(CLS CLAMPS CONT'D)				
<u>BOOM ARM BRACKETS</u>				
CL11	Boom Arm Bracket (Twisted)	(48mm Bar)	18.00	19.80
CL20	Boom Arm Bracket (Straight)	(48mm Bar)	18.00	19.80
CL30	Boom Arm (Half Length Bracket)	(48mm Bar)	17.00	18.70
<u>ALTMAN / WALL TRACK CLAMP</u>				
CL13	Altman Clamp		20.00	22.00
CL16	Wall Track Clamp	(Hook not included)	21.50	23.65

11. CLS COLOUR FRAMES

GF01	Patt 23 Colour Frame	(101mm ²)	9.00	9.90
GF02	Minum / Minuette Colour Frame (Selecon Acclaim)	(125 mm ²)	9.00	9.90
GF03	Prelude Colour Frame	(150 mm ²)	9.00	9.90
GF15	Source Four Colour Frame	(160 mm ²)	9.00	9.90
GF17	Strand SL Zoom Colour Frame	(160 mm ²)	9.00	9.90
GF04	T' Spot Colour Frame	(165 mm ²)	9.00	9.90
GF05	Patt 123 Colour Frame	(166 mm ²)	9.00	9.90
GF06	Harmony Colour Frame	(185 mm ²)	10.00	11.00
GF14	Selecon 1.2K Fresnel Colour Frame	(185 mm ²)	10.00	11.00
GF16	Selecon Pacific Profile Colour Frame	(185 mm ²)	10.00	11.00
GF07	Leko Colour Frame	(190 mm ²)	10.00	11.00
GF18	Kupo Multipar Colour Frame (Black Only)	(195 mm ²)	10.00	11.00
GF08	Patt 743 / Patt 223 Colour Frame	(216 mm ²)	11.00	12.10
GF09	Par 56 Colour Frame	(229 mm ²)	11.00	12.10
GF13	Patt 137 Colour Frame	(243 x 233 mm)	14.00	15.40
GF10	Cadenza Colour Frame	(245 mm ²)	14.00	15.40
GF11	Par 64 Colour Frame	(254 mm ²)	14.00	15.40
GF12	Patt 243 Colour Frame	(300 mm ²)	21.50	23.65







12. CLS PATTERN HOLDERS

PH01	CCT Minuette - "M Size"	(hole 50mm/width 74mm)	19.00	20.90
PH02	Coemar Accento - "M Size"	(hole 50mm/width 71mm)	19.00	20.90
PH03	Tulla Profile / Mini Zoom - "M Size"	(hole 50mm/width 76mm)	19.00	20.90
PH04	Patt 23 - "B Size"	(hole 70mm/width 88mm)	19.00	20.90
PH05	Altman Leko - "B Size"	(hole 70mm/width 85mm)	19.00	20.90
PH06	CCT Silhouette - "B Size"	(hole 70mm/width 113mm)	19.00	20.90
PH07	Selecon Zoomspot 1200 - "B Size"	(hole 70mm/width 114mm)	19.00	20.90
PH13	Selecon Acclaim 650W Zoomspot - "B Size"	(hole 70mm/width 96mm)	19.00	20.90
PH15	Selecon Pacific Zoomspot - "B Size"	(hole 70mm/width 96mm)	19.00	20.90
PH16	Selecon Pacific Zoomspot - "M Size"	(hole 50mm/width 96mm)	19.00	20.90
PH09	T' Spot - "B Size"	(hole 70mm/width 108mm)	19.00	20.90
PH10	Harmony / Prelude - "B Size"	(hole 70mm/width 108mm)	19.00	20.90
PH14	Source Four (B Size) - "B Size"	(hole 70mm/width 96mm)	19.00	20.90
PH21	Source Four (M Size) - "M Size"	(hole 50mm/width 96mm)	19.00	20.90
PH12	Cadenza (2K Foll/spot) - "A Size"	(hole 80mm/width 121mm)	21.50	23.65
PH11	Donuts To Suit 650w Minuette - B Size Hole		5.50	6.05
PH19	Donuts To Suit 650w Minuette - M Size Hole		5.50	6.05
PH08	Donuts To Suit 1.2K Fresnel - B Size Hole		8.50	9.35
PH18	Donuts To Suit Pacific Profiles - Available in A & B Size Hole		8.50	9.35

Product Code	Product Description	Trade Ex-GST	Trade Inc-GST
13. MULTIPARS			
<u>KUPO MULTIPAR HO</u>			
KM01	Kupo Multipar HO Black w/o HPL 575w Lamp	126.36	139.00
KM02	Kupo Multipar HO Silver w/o HPL 575w Lamp	126.36	139.00
<u>KUPO MULTIPAR HOG</u>			
KM03	Kupo Multipar HOG Black w/o HPL 575w Lamp	162.73	179.00
KM04	Kupo Multipar HOG Silver w/o HPL 575w Lamp	162.73	179.00
<u>MULTIPAR BARNDOORS</u>			
KM05	Kupo Multipar Barndoor - Black	36.36	40.00
KM06	Kupo Multipar Barndoor - White	36.36	40.00

14. PAR CANS, MIRROR BALLS & ACCESSORIES

PAR CANS

<u>Par 64 Alloy Cans</u>				
PLH01	Par 64 Alloy Can Long (Black)	 (c/w Frame, Wiring Set)	80.00	88.00
PLH02	Par 64 Alloy Can Long (Polished)	(c/w Frame, Wiring Set)	80.00	88.00
<u>Par 56 Alloy Cans</u>				
PLH03	Par 56 Alloy Can Long (Black) with lamp adjuster	 (c/w Frame, Wiring Set & Plug)	70.00	77.00
PLH04	Par 56 Alloy Can Long (Polished) with lamp adjuster	(c/w Frame, Wiring Set & Plug)	70.00	77.00
<u>Par 56 Alloy Stubble Cans</u>				
PLH50	Par 56 Alloy Can - Stubble (Black)	 (c/w Colour Frame & Wiring Set)	59.00	64.90
PLH51	Par 56 Alloy Can - Stubble (Polished)	(c/w Colour Frame & Wiring Set)	59.00	64.90
<u>Par 46 Alloy Cans</u>				
PLH46	Par 46 Alloy Can (Black)	 (c/w Frame, E27 Base & Plug)	50.00	55.00
PLH47	Par 46 Alloy Can (Polished)	(c/w Frame, E27 Base & Plug)	50.00	55.00
<u>Par 30 Alloy Cans</u>				
PLH52	Par 30 Alloy Can (Black)	 (c/w Frame, E27 Base & Cable)	40.00	44.00
PLH53	Par 30 Alloy Can (Silver)	(c/w Frame, E27 Base & Cable)	40.00	44.00
<u>Par 20 Alloy Cans</u>				
PLH54	Par 20 Alloy Can (Black)	 (c/w Frame, E27 Base & Cable)	35.00	38.50
PLH55	Par 20 Alloy Can (Silver)	(c/w Frame, E27 Base & Cable)	35.00	38.50

Product Code	Product Description		Trade Ex-GST	Trade Inc-GST
(PAR CANS, MIRROR BALLS & ACCESSORIES CONT'D)				
<u>Par 16 Alloy Cans 12v Version</u>				
PLH07	Par 16 Alloy Can (Black)		(c/w Wiring Set & Gel Frame) 28.00	30.80
PLH05	Par 16 Alloy Can (Silver)		(c/w Wiring Set & Gel Frame) 28.00	30.80
<u>PAR 16 STUBBIE VERSION</u>				
PLH39	Par 16 Alloy Stubbie Can (Black)		(c/w Wiring Set & Gel Frame) 28.00	30.80
PLH40	Par 16 Alloy Stubbie Can (Silver)		(c/w Wiring Set & Gel Frame) 28.00	30.80
<u>Par 16 Alloy Cans 240v Version</u>				
PLH148	Par 16 Alloy Can 240v Version (Black)		(c/w 240v Lamp, Cable & Plug) 30.00	33.00
PLH149	Par 16 Alloy Can 240v Version (Chrome)		(c/w 240v Lamp, Cable & Plug) 30.00	33.00
<u>PAR SAFES</u>				
PLH122	Par Safe with 80cm Silicone Cable & Earth Lug		20.00	22.00
<u>BARNDOORS</u>				
PLH56	Barndoor for Par 64 - Black / Silver		55.00	60.50
PLH58	Barndoor for Par 56 - Black / Silver		49.00	53.90
PLH60	Barndoor for Par 46 - Black / Silver		36.00	39.60
PLH131	Barndoor for Par 30 - Black / Silver		40.00	44.00
PLH123	Barndoor for Par 20 - Black / Silver		30.00	33.00
PLH29	Barndoor for Par 16 - Black / Silver		27.00	29.70
<u>COLOUR FRAMES</u>				
PLH93	Par 64 Colour Frame - Black / Silver		13.00	14.30
PLH94	Par 56 Colour Frame - Black / Silver		11.00	12.10
PLH08	Par 56 Stubbie Colour Frame - Black / Silver		11.00	12.10
PLH95	Par 46 Colour Frame - Black / Silver		9.20	10.12
PLH99	Par 20 Colour Frame - Black / Silver		6.00	6.60
PLH45	Par 16 Colour Frame - Black Silver		4.55	5.01
<u>PAR 16 TRANSFORMERS</u>				
PLH30	Atco Par 16 Transformer c/w lead & plug (Copper)		(12v x 50VA) 18.00	19.80
PLH138	Electronic Transformer (Mouse) - 240V -60VA c/w lead & plug		(240V x 60VA) 16.00	17.60
PLH32	Atco Par 16 Transformer		(12v x 100VA) w/o plug 40.00	44.00
PLH27	Atco Par 16 Transformer		(12v x 200VA) w/o plug 87.00	95.70
<u>PINSPOTS</u>				
PLH06	Pin Spot Fixture (Black) Kupo		(c/w Transformer & Plug) 32.00	35.20
PLH70	Pin Spot Fixture (Silver) Kupo		(c/w Transformer & Plug) 35.00	38.50
PLH76	Gel Caps (assorted colours)		(8 Colours) 3.00	3.30
PLH105	Transformer (to suit Pinspot)		15.00	16.50
<u>STROBES</u>				
PLH82	Hanging Strobe 4" clear tube c/w lead & 240v Plug		25.00	27.50
PLH150	Point Strobe / Egg Strobe E27 Base		25.00	27.50
PLH71	Disco 75w Power Strobe - 75W 0-10Vdc		90.00	99.00
PLH139	Zap Strobe 75P 75W 0-10Vdc		100.00	110.00
PLH140	Golden Strobe Standard 3000W 0-10dc		245.00	269.50
PLH141	Golden Strobe DMX 3000W DMX512		300.00	330.00
PLH142	Golden Strobe Controller		71.00	78.10
PLH143	Strobe Controller - 1 Channel		35.00	38.50
PLH144	Strobe Controller 4 Channel		270.00	297.00
PLH154	Martin Atomic Strobe 3000 DMX		1,544.55	1,699.01

Product Code	Product Description	Trade Ex-GST	Trade Inc-GST
(PAR CANS, MIRROR BALLS & ACCESSORIES CONT'D)			
<u>UV PROJECTOR</u>			
PLH145	UV Gun 400w Projector c/w lamp	375.00	412.50
PLH153	UV Gun 125w Projector c/w lamp	205.45	226.00
			
<u>BLINDERS</u>			
PLH114	Molefay Duet (2 Way Blinder) (ex - 2 x DWE Lamps)	(c/w plug) 180.00	198.00
PLH120	4 Way Blinder (ex - 4 x DWE Lamps) (Unwired)	(w/o plug) 200.00	220.00
PLH115	8 Way Blinder (ex - 8 x DWE Lamps) (Unwired)	(w/o plug) 280.00	308.00
<u>POLICE BEACONS</u>			
PLH127	Police Beacon (Low Voltage) 'Blue' 12v x 55w c/w lamp	(12v x 55w) 160.00	176.00
<u>MIRROR BALLS CHROME</u>			
PLH33	2" Mirror Ball Chrome (57mm)	4.00	4.40
PLH34	4" Mirror Ball Chrome (102mm)	8.00	8.80
PLH124	6" Mirror Ball Chrome (153mm)	12.00	13.20
PLH18	8" Mirror Ball Chrome (203mm)	20.00	22.00
PLH14	12" Mirror Ball Chrome (305mm)	38.00	41.80
PLH15	16" Mirror Ball Chrome (406mm)	65.00	71.50
PLH16	20" Mirror Ball Chrome (508mm)	120.00	132.00
PLH19	24" Mirror Ball Chrome (610mm)	220.00	242.00
PLH128	30" Mirror Ball Chrome (750mm)	650.00	715.00
			
<u>MIRROR CYLINDER</u>			
MCY01	Mirror Cylinder 300mm	60.00	66.00
MCY02	Mirror Cylinder 500mm	89.00	97.90
MCY03	Mirror Cylinder 1000mm	120.00	132.00
			
<u>MIRROR BALL MOTORS / COLOUR WHEELS</u>			
PLH38	Battery Mirror Ball Motor (Batteries not included)	15.00	16.50
PLH17	2 RPM Mirrorball Motor (suits sizes 8" to 16" Mirrorball)	20.00	22.00
PLH91	Heavy Duty Mirrorball Motor (suits 24" Mirrorball)	85.00	93.50
PLH92	Extreme Heavy Duty Mirrorball Motor - SWL 40Kg	210.00	231.00
PLH20	Mirrorball Mounting Bracket	20.00	22.00
PLH12	Mirrorball motor mounted to bracket	45.00	49.50
			
<u>ACCESSORIES & SPARE PARTS</u>			
PLH13	Par 56/64 Wiring Set with Silicone cable	(c/w 0.5m Flex) 24.00	26.40
PLH26	Par 64 Raylight Reflector Kit (Mogul) (c/w Socket)	24.00	26.40
PLH37	Par 56 Raylight Reflector Kit (Mogul) (c/w Socket)	24.00	26.40
PLH09	Par 64 Raylight Reflector Kit (c/w High Temp Cable)	32.00	35.20
PLH10	Par 56 Raylight Reflector Kit (c/w High Temp Cable)	32.00	35.20
PLH75	Par 64/56 Tri Nut (to suit Litecraft Par Cans Only) (High Temp)	(2.5cm long thread) 4.00	4.40
PLH79	Par 64/56 Tri Nut to suit other series of Par Cans (High Temp)	(3cm long thread) 5.00	5.50
PLH88	Par 64/56 Pin (to suit Litecraft Par Cans)	2.50	2.75
			

Product Code	Product Description	Trade Ex-GST	Trade Inc-GST
(PAR CANS, MIRROR BALLS & ACCESSORIES CONT'D)			
PLH74	Spring Knobs for Par 64/56 Cans	4.00	4.40
PLH106	Cable Gland for Par 64/56 Cans	5.00	5.50
PLH22	Locating Pins	3.50	3.85
PLH121	Par 64 Yoke (Black / Chrome)	18.50	20.35
PLH85	Par 64 Retaining Ring	6.00	6.60
PLH86	Par 56 Retaining Ring	6.00	6.60
PLH87	Par 36 Pin Spot Retaining Ring	4.00	4.40
PLH102	Raylight Spider	15.00	16.50

15. LED

LED PINSPOTS

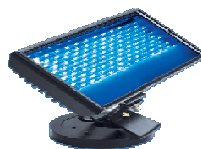
LED10	LED Pinspot (Chrome) - 66 LEDss	(5 Pin DMX)	130.00	143.00
LED11	LED Pinspot (Black) - 66 LEDss	(5 Pin DMX)	130.00	143.00

LED PAR 56

LED12	LED Par 56 (Chrome) - 153 LEDs	320.00	352.00
LED13	LED Par 56 (Black) - 153 LEDs	320.00	352.00

LED WALL WASHER

LED14	LED Wall Washer IP44	908.18	999.00
LED15	LED Honeycomb - LED Wall Washer - 36 LEDs	1,362.73	1,499.00
LED16	LED Honeycomb - LED Wall Washer - 72 LEDs	2,090.00	2,299.00



LED NEON FLEX



LED01	LED Neon Flex 240v Blue Per 91cm	100.00	110.00
LED02	LED Neon Flex 240v White Per 91cm	162.73	179.00
LED03	LED Neon Flex 240v Red Per 152cm	100.00	110.00
LED04	LED Neon Flex 240v Orange Per 152cm	100.00	110.00
LED05	LED Neon Flex 240v Yellow Per 152cm	100.00	110.00
LED06	LED Neon Flex 240v Amber Per 152cm	100.00	110.00
LED07	LED Neon Flex 240v Green Per 91cm	162.73	179.00
LED08	Neon Flex Mounting Clip	0.91	1.00
LED09	Neon Flex Connector	1.82	2.00

16. 400W METAL HALIDE FLOODLIGHT

SY01	Sylvania 400w Floodlight c/w 240 Plug	330.00	363.00
------	---------------------------------------	--------	--------

Product Code	Product Description	Trade Ex-GST	Trade Inc-GST
--------------	---------------------	--------------	---------------

17a. SELECON FRESNELS



ACCLAIM 650W FRESNEL

Small fresnel (110mm lens) designed for Short Throws, the standard luminaire for the small stage. Features include adjustable yoke, smooth focus, automatic disconnection of mains supply.

SE100	Acclaim Fresnel supplied with T/27 650w Lamp	305.00	335.50
SE748	Acclaim Fresnel - White supplied with T/27 650w Lamp	396.00	435.60
SE101	Barndoor	45.00	49.50
SE749	Barndoor - White Ext./Black Int.	75.00	82.50
SE124	Lens Safety Mesh	14.00	15.40

RAMA FRESNEL

SE129	Rama Fresnel 150mm Lens GX9.5 Socket supplied with T/29	c/w standard yoke & plug	520.00	572.00
SE137	Rama Fresnel 150mm Lens GX9.5 Socket supplied with T/29	c/w Fast Focus Technology	570.00	627.00
SE144	Barndoor - new model		100.00	110.00
SE124	Lens Safety Mesh		14.00	15.40
SE145	Fast Focus Pan Kit		50.00	55.00



RAMA HP FRESNEL

SE146	Rama HP Fresnel 175mm Lens GX9.5 Socket supplied with T/29	c/w standard yoke & plug	630.00	693.00
SE147	Rama HP Fresnel 175mm Lens GX9.5 Socket supplied with T/29	c/w Fast Focus Technology	680.00	748.00
SE144	Barndoor - new model		100.00	110.00
SE124	Lens Safety Mesh		14.00	15.40
SE145	Fast Focus Pan Kit		50.00	55.00

ARENA THEATRE FRESNEL 2K

2000w 200mm (8 Inch lens) GY16 lampbase
Features include adjustable yoke, smooth focus, automatic disconnection of mains supply.



SE128	Arena Theatre Fresnel 2000w posi slide focus	(c/w CP/72/43 lamp)	925.00	1,017.50
SE125	Barndoor for Arena Theatre Fresnel		190.00	209.00
SE126	Lens Safety Mesh		22.00	24.20

ARENA THEATRE FRESNEL 2.5kw - 200mm dia lens (G22)

2500w 200mm diameter lens G22 lampbase

SE127	Arena Theatre Fresnel c/w CP91/92 lamp		945.00	1,039.50
SE125	Barndoor for Arena Theatre Fresnel		190.00	209.00
SE126	Lens Safety Mesh		22.00	24.20



Product Code	Product Description	Trade Ex-GST	Trade Inc-GST
--------------	---------------------	--------------	---------------

(SELECON FRESNELS CONT'D)**ARENA HIGH PERFORMANCE FRESNEL**

2000w/2500w Stage/Studio fresnel 250mm (10 Inch) lens GY16 lampbase

Features include adjustable yoke, smooth focus, automatic disconnection of mains supply.

SE104	Arena High Performance Fresnel 2K (10 inch Lens) (GY16)	(c/w CP72/43 2000W Lamp)	1,252.00	1,377.20
SE119	Arena High Performance Fresnel Barndoor		260.00	286.00
SE123	Lens Safety Mesh		28.00	30.80

**ARENA "HIGH PERFORMANCE" FRESNEL**

2500w/2000w Fresnel with 250mm (10 Inch) lens G22 lampbase.

Features include adjustable yoke, smooth focus, automatic disconnection of mains supply.

SE105	Arena High Performance Fresnel (10 inch lens) (G22 lampbase)	(c/w CP92/91 Lamp G22 Base)	1,275.00	1,402.50
SE106	Arena High Performance Barndoor		260.00	286.00
SE123	Lens Safety Mesh		28.00	30.80

17b. SELECON PLANO CONVEX SPOTS**ACCLAIM PC 650W**

New model compact PC (110mm lens) designed for the smaller stage including drama studios, small theatres, display etc. (GY9.5 lampbase)

SE200	Acclaim PC with mains isolating microswitch (110mm Lens)	(c/w T/27 650W Lamp)	335.00	368.50
SE201	Acclaim PC Barndoor		45.00	49.50
SE124	Lens Safety Mesh		14.00	15.40

RAMA PC

SE150	Rama PC 150mm Lens GX9.5 Socket Supplied with T/29 1200w Lamp	(c/w standard yoke & plug)	580.00	638.00
SE151	Rama PC 150mm Lens GX9.5 Socket Supplied with T/29 1200w Lamp	(c/w Fast Focus Technology)	630.00	693.00
SE144	Barndoor - new model		100.00	110.00
SE124	Lens Safety Mesh		14.00	15.40
SE145	Fast Focus Pan Kit		50.00	55.00

**RAMA HP PC**

SE154	Rama PC 175mm Lens GX9.5 Socket Supplied with T/29 1200w Lamp	(c/w standard yoke & plug)	660.00	726.00
SE155	Rama PC 175mm Lens GX9.5 Socket Supplied with T/29 1200w Lamp	(c/w Fast Focus Technology)	710.00	781.00
SE144	Barndoor - new model		100.00	110.00
SE124	Lens Safety Mesh		14.00	15.40
SE145	Fast Focus Pan Kit		50.00	55.00



Product Code	Product Description	Trade Ex-GST	Trade Inc-GST
(SELECON PLANO CONVEX SPOTS CONTD)			
<u>ARENA PC2000</u>			
2000w PC for large theatres, long throws and studios. 200mm lens. (GY16 lampbase)			
SE204	Arena PC2000 (200mm Lens)	1,050.00	1,155.00
SE206	Arena PC Barndoor	190.00	209.00
SE126	Lens Safety Mesh	22.00	24.20



17c. SELECON HUI / LUI CYC/FLOOD RANGE

HUI 500w/800w CYC AND GROUNDROW RANGE



HUI CYC 500

Asymmetric reflector for even illumination of cyclorama or backcloths up to 6 metres high. Available as a single unit or in multiple battens of 3 or 4, fitted with full yokes. Tempered safety glass, safety chain anchor points and dual microswitch mains cutout are standard safety features.

HC01	HUI Single Cyc - Supplied with QI500w Lamp	270.00	297.00
HC02	HUI 3-Way Cyc Batten - Supplied with QI500w Lamps	788.00	866.80
HC03	HUI 4-Way Cyc Batten - Supplied with QI500w Lamps	970.00	1,067.00
HC04	HUI Cyc / Flood Barndoor	60.00	66.00
HC05	HUI / LUI Colour Filter Holder	18.00	19.80
HC06	HUI / LUI Safety Glass	18.00	19.80

HUI FLOOD 500

Symmetrical reflector providing an even flood of light. Available as a single unit or in multiples of 3 or 4s which are supplied with yokes. Tempered safety glass, safety chain anchor points and dual microswitch mains cutout are standard safety features.

HC07	HUI Single Flood - Supplied with QI500w Lamp	270.00	297.00
HC08	HUI 3 - Way Flood Batten - Supplied with QI500w Lamps	788.00	866.80
HC09	HUI 4 - Way Flood Batten - Supplied with QI500w Lamps	970.00	1,067.00
HC04	HUI Cyc / Flood Barndoor	60.00	66.00
HC05	HUI / LUI Colour Filter Holder	18.00	19.80
HC06	HUI / LUI Safety Glass	18.00	19.80

LUI 1000w CYC AND GROUNDROW RANGE



LUI CYC 1000

Asymmetric reflector for even illumination of cyclorama or backcloths up to 6 metres high. Available as a single unit or in multiple battens of 3 or 4, fitted with full yokes. Tempered safety glass, safety chain anchor points and dual pole microswitch mains cutout are standard safety features.

LC01	LUI Single Cyc - Supplied with QI1000w Lamp	335.00	368.50
LC02	LUI 3 - Way Cyc Batten with Tails - Supplied with QI1000w Lamps	815.00	896.50
LC03	LUI 4 - Way Cyc Batten with Tails - Supplied with QI1000w Lamps	998.00	1,097.80
LC04	LUI Cyc / Flood Barndoor	60.00	66.00
LC05	LUI / HUI Colour Filter Holder	18.00	19.80
LC06	LUI / HUI Safety Glass	18.00	19.80

Product Code	Product Description	Trade Ex-GST	Trade Inc-GST
(SELECON LUI FLOOD CONT'D)			
<u>LUI FLOOD 1000</u>			
Symmetrical reflector providing an even of light. Available as a single unit or in multiples of 3 or 4s which are supplied with full yokes. Tempered safety glass, safety chain anchor points and dual microswitch mains cutout are standard safety features.			
LC07	LUI Single Flood - Supplied with Q11000w Lamp	335.00	368.50
LC08	LUI 3 - Way Flood Batten with Tails - Supplied with Q11000w Lamps	815.00	896.50
LC09	LUI 4 - Way Flood Batten with Tails - Supplied with Q11000w Lamps	998.00	1,097.80
LC04	LUI Cyc / Flood Barndoor	60.00	66.00
LC05	LUI / HUI Colour Filter Holder	18.00	19.80
LC06	LUI / HUI Safety Glass	18.00	19.80

17d. SELECON PROFILES



ACCLAIM 500/650W ZOOMSPOT

High output ellipsoidal, variable beam profiles.

Features include interchangeable lens tray assemblies, adjustable yoke, rotatable gobo holder, smooth focus, easy & safe access for relamping and maintenance.

SE400	Acclaim Zoomspot 650W 18° - 34°	(c/w T 27 650W Lamp)	610.00	671.00
SE401	Acclaim Zoomspot 650W 24° - 44°	(c/w T 27 650W Lamp)	610.00	671.00
SE750	Acclaim Adjustable Iris - 20 Leaf		225.00	247.50
SE751	Acclaim Gobo Holder M Size		30.00	33.00
SE752	Lens Safety Mesh		14.00	15.40

"NEW" - ACCLAIM AXIAL ZOOMSPOT

50% Increase in light output. Hot Mirror.

All accessories as for Acclaim Profiles



SE423	Acclaim Axial Zoomspot 18-34	(c/w GKV 600w Lamp)	610.00	671.00
SE753	Acclaim Axial Zoomspot 18-34 White	(c/w GKV 600w Lamp)	770.00	847.00
SE425	Acclaim Axial Zoomspot 24-44	(c/w GKV 600w Lamp)	610.00	671.00
SE754	Acclaim Axial Zoomspot 24-44 White	(c/w GKV 600w Lamp)	770.00	847.00
SE403	Acclaim Axial 24 - 44 Lens Tray		245.00	269.50
SE407	Acclaim Axial 18 - 34 Lens Tray		245.00	269.50

17e. SELECON FOLLOWSPOT RANGE

PACIFIC FOLLOWSPOT

Cool beam & all the operational advantages of Selecon's Pacific heat management technology

Choice of 600/800w: 1000w; 80v 1200w or MSR 575W Hot Restrike lamp sources



SE500	Pacific Followspot - 600/800w Tungston Halogen	Supplied with GKV 600w Lamp	1,770.00	1,947.00
SE501	Pacific Followspot - 1000w Tungston Halogen	Supplied with BP 1000w Lamp	1,770.00	1,947.00
SE130	Pacific Followspot - 1200w 80v Power Supply	Supplied with CP110 1200 Lamp	2,957.00	3,252.70
SE158	Pacific Followspot - MSR 575 Hot Restrike with Universal P/Supply	NO LAMP	4,480.00	4,928.00
SE755	Pacific Followspot 4 Colour Changer		460.00	506.00
SE756	Fold Down Followspot Stand		390.00	429.00
SE757	Pacific Followspot Pattern Holder - A Size		85.00	93.50

Product Code	Product Description	Trade Ex-GST	Trade Inc-GST
(SELECON FOLLOWSPOT RANGE CONT'D)			
<u>PERFORMER SERIES 2 FOLLOWSPOTS</u>			
Selecon's new range of High Performance Followspots feature integrated electronic mains power supply, 24 leaf iris, dowsers, cutters, CTO and diffusion frost supplied with lamp, six colour changer and tripod based fold down stand.			
SE508	Tahi Followspot: Wide Angle 18 deg - 24 deg	12,000.00	13,200.00
SE514	Rua Followspot: Medium Angle 9 deg - 16 deg	12,000.00	13,200.00
SE510	Tora Followspot: Narrow Angle 4 deg - 8 deg	15,800.00	17,380.00
SE511	Pattern Holder for the Performer Series 2 Models	38.00	41.80
SE512	A Set of 3 Braking Wheels for the Performer Series F/Spot Stand	39.00	42.90



17f. SELECON AURORA CYC/FLOOD RANGE

AURORA 625/1000/1250w CYC/GROUNDROW RANGE

Asymmetrical reflector for even illumination of cyclorama or backcloths up to 9 metres high. Available as a single unit or in multiple battens. Features high efficiency, smooth output reflector design, robust construction. Extended filter life, connector options and pole operation tilt. Tempered safety glass, safety chain anchor points, dual pole microswitch mains cutout are standard safety features.

All Units are supplied with P2/12 1250w Lamps

SE600	Aurora Single 1000/1250 Cyc Unit	527.00	579.70
SE601	Aurora Single 1000/1250 Pole Op Tilt	627.00	689.70
SE603	Aurora 4 Way Linear 1000/1250	1,765.00	1,941.50
SE604	Aurora 4 Way Linear 1000/1250 Cyc c/w Weiland Connectors	1,915.00	2,106.50
SE605	Aurora 4 Way Linear Cyc with x 2 Weiland 16 Pin Conn. In/out	1,915.00	2,106.50
SE614	Aurora 4 Way Linear 1/1.2k Cyc c/w Socapex Connectors	2,150.00	2,365.00
SE615	Aurora 4 Way Linear 1/1.2k Cyc c/w Socapex 19 Connectors	2,395.00	2,634.50
SE616	Aurora 4 Way square Cyc with separate top/bottom pole op tilt	2,170.00	2,387.00
SE617	Aurora 4 Way square Cyc	2,100.00	2,310.00
SE618	Aurora Barndoor	120.00	132.00
SE619	Aurora Safety Glass	35.00	38.50
SE620	Aurora Colour Frame	55.00	60.50



AURORA 625/1000/1250w FLOOD RANGE

Symmetrical reflector version providing an even flood of light. Ideal for display & controlled working applications. Tempered safety glass & dual pole microswitch mains cutout are standard safety features.

All Units are supplied with P2/12 1250w Lamps

SE606	Aurora Single 1/1.2k Flood - Supplied with P2/12 1250w Lamp	527.00	579.70
SE607	Aurora Single Flood Pole Operation Tilt - c/w P2/12 1250w Lamp	627.00	689.70
SE133	Aurora Two way linear Flood - cable tails - c/w P2/12 1250w Lamps	1,087.00	1,195.70
SE134	Aurora Four way linear - cable tails - c/w P2/12 1250w Lamps	1,765.00	1,941.50
SE608	Aurora Flood Barndoor	120.00	132.00



Product Code	Product Description	Trade Ex-GST	Trade Inc-GST
(SELECON AURORA CYC/FLOOD RANGE CONT'D)			
<u>AURORA 625/1000/1250 GROUNDROW RANGE</u>			
A purpose designed, groundrow range available in single hinged or 4 way batters.			
Adjustable feet, straight colour frame, multi pin connector options and safety glass.			
All Units Are Supplied With P2/12 1250w Lamps			
SE609	Aurora Single Groundrow with hinges	527.00	579.70
SE610	Aurora 4 Way Groundrow	1,845.00	2,029.50
SE611	Aurora 4 Way Groundrow c/w Socapex Connectors	1,895.00	2,084.50
SE612	Aurora 4 Way Groundrow - X2 Socapex 16 Pin Conn in/out	2,285.00	2,513.50
SE135	Aurora 4 Way Groundrow c/w Weiland Connectors	1,895.00	2,084.50
SE136	Aurora 4 Way Groundrow - X2 Weiland 16 Pin Conn in/out	2,285.00	2,513.50



17g. SELECON PACIFIC PROFILES

The Pacific; an innovative range of 575/600 or 1000w TH, CDM MSR & 80v compact axial profiles. A compact filament lamp mounted axially, base down in an ellipsoidal reflector together with the use of cold mirror technology provides active heat management. The Pacific's optical system ensures a bright, efficient & cool beam of light. Finishes - Black, Chrome Finish.

PACIFIC ZOOMSPOT STANDARD - PAC1228

Compact sized variable beam zoomspot using base axial lamp technology. Medium throw. Beam Angles 12-28

SE720	Pacific Zoom 12/28 c/w 575/600w Lamp Module & Plug	Supplied with GKV 600w Lamp	882.00	970.20
SE721	Pacific Zoom 12/28 c/w 1000w Lamp Module & Plug	Supplied with BP 1000w Lamp	882.00	970.20
SE707	Safety Mesh Zoom 12/28		18.00	19.80
SE711	Colour Frame 12/28		14.00	15.40
SE714	Pacific Gobo Holder ZM 12/28 M Size pattern		35.00	38.50
SE716	Pacific Gobo Holder ZM 12/28 M Size for glass patterns		35.00	38.50



PACIFIC ZOOMSPOT STANDARD - PAC1435

Compact sized variable beam zoomspot using base axial lamp technology. Medium throw. Beam Angles 14-35

SE758	Pacific Zoom 14/35 c/w 575/600w Lamp Module & Plug	Supplied with GKV 600w Lamp	882.00	970.20
SE761	Pacific Zoom 14/35 c/w 1000w Lamp Module & Plug	Supplied with BP 1000w Lamp	882.00	970.20

Accessories as for PAC1435




PACIFIC ZOOMSPOT 5.5/13 Narrow

Narrow angle Zoom for long throw applications
5.5 to 13 degrees.

SE722	Pacific Zoom 5.5/13 c/w 575/600w Lamp Module & Plug	Supplied with GKV 600w Lamp	1,380.00	1,518.00
SE723	Pacific Zoom 5.5/13 c/w 1000w Lamp Module & Plug	Supplied with BP 1000w Lamp	1,380.00	1,518.00
SE717	Pacific 5.5/13 NO Lamp Module (order separately)		1,190.00	1,309.00
SE718	Pacific Pattern Holder - standard M Size		35.00	38.50
SE719	Pacific Pattern Holder - M Size for glass gobos		35.00	38.50
SE725	Safety Mesh to fit 5.5/13 lens tube		22.00	24.20
SE726	Pacific 5.5/13 Colour frame		26.00	28.60
SE727	Pacific 5.5/13 Lens Tube complete		850.00	935.00
SE762	Heavy Duty Yoke for Pacific 5.5-13 Zoomspot		180.00	198.00



Product Code	Product Description		Trade Ex-GST	Trade Inc-GST
(SELECON PACIFIC PROFILES CONT'D)				
<u>PACIFIC ZOOMSPOT WIDE PAC 23-50</u>				
Compact sized, variable beam zoomspot using base axial technology. Beam angles 23-50 degrees.				
SE728	Pacific Zoom 23/50 c/w 575/600w Lamp Module & plug		Supplied with GKV 600w Lamp	882.00 970.20
SE729	Pacific Zoom 23/50 c/w 1000w Lamp Module & plug		Supplied with BP 1000w Lamp	882.00 970.20
SE730	Pacific 23/50 Zoom. NO Lampodule (order separately)			692.00 761.20
SE731	Pacific Safety Mesh Fixed and Wide			18.00 19.80
SE733	Pacific Wide/Fixed Colour Frame			14.00 15.40

<u>PACIFIC FIXED BEAM - PAC20, PAC30, PAC40, PAC50</u>				
Compact sized, fixed beam profile using base axial lamp technology. Beam angles 20,30,40 & 50.				
SE734	Pacific Fixed Beam c/w 575/600w Lamp Module & Plug (no lens)		Supplied with GKV 600w Lamp	800.00 880.00
SE735	Pacific Fixed Beam c/w 1000w Lamp Module & Plug (no lens)		Supplied with BP 1000w Lamp	800.00 880.00
SE736	Pacific Fixed Beam Luminaire - NO Lamp Module (order sep)			540.00 594.00
<u>Lenses</u>				
SE737	20 deg Pacific Lens Assembly colour code red			98.00 107.80
SE738	30 deg Pacific Len Assembly colour code brown			98.00 107.80
SE739	40 deg Pacific Len Assembly colour code grey			98.00 107.80
SE740	50 deg Pacific Len Assembly colour code blue			98.00 107.80

<u>PACIFIC 90 DEG</u>				
The world's only 90 degree profile.				
The fixture can either be purchased as a complete system with the lamp module of choice or as the lens tube only.				
SE741	Pacific 90 with 575/600w Lamp Module c/w plug		Supplied with GKV 600w Lamp	980.00 1,078.00
SE742	Pacific 90 with 1000w Lamp Module c/w plug		Supplied with BP 1000w Lamp	980.00 1,078.00
SE743	Pacific 90 - NO Lamp Module (order separately)			790.00 869.00
SE744	Pacific Gobo Holder Fixed/Wide A Size Pattern			35.00 38.50

17h. DESIGN STENCILS

SE759	Stencil of Selecon Luminaires 1.25 Scale			24.00 26.40
SE760	Stencil of Selecon Luminaires 1.50 Scale			24.00 26.40

17i. SELECON SPARE PARTS

<u>KNOBS</u>				
SE700	Lens/Lamptray Adjustment Knob			7.50 8.25
SE702	Locking Clamp 4 Star Knob			9.00 9.90
SE703	Acclaim Rear Handle			12.00 13.20
SE704	Acclaim Yoke Locking Handle			18.00 19.80

Product Code	Product Description	Trade Ex-GST	Trade Inc-GST
(SELECON SPARE PARTS CONT'D)			
<u>SHUTTERS</u>			
SE706	Shutter (complete with handles) to suit: Acclaim, 1200 Zoomspot & Condensor, Arena Zoomspot)	15.00	16.50
SE139	Shutter Blade - Acclaim Axial	12.00	13.20
SE140	Shutter Blade - Pacific	12.00	13.20
<u>LENSES / FRESNELS</u>			
SE708	Acclaim Fresnel lens - 100mm dia	42.50	46.75
SE709	Compact Fresnel 150mm dia lens	105.00	115.50
SE710	High Performance Fresnel 1200 - 175mm dia lens	220.00	242.00
SE715	Arena Theatre Fresnel - 200mm diameter lens	155.00	170.50
SE141	Arena High Performance Fresnel - 250mm diameter lens	310.00	341.00
SE142	Acclaim P.C. - 100mm diameter lens	95.00	104.50
SE745	Compact PC - 150mm diameter lens	155.00	170.50
SE746	High Performance PC 1200 - 175mm dia lens	195.00	214.50
SE747	Arena PC - 200mm diameter lens	235.00	258.50

18. ETC

<u>ETC Source Four Luminaire</u>			
ETC01	ETC Source Four 5 Deg Luminaire	1,114.54	1,225.99
ETC02	ETC Source Four 10 Deg Luminaire	899.09	989.00
ETC03	ETC Source Four 14 Deg Luminaire	872.73	960.00
ETC04	ETC Source Four 19, 26, 36, 50 Deg Luminaires	631.82	695.00
ETC05	ETC Source Four 70, 90 Deg Luminaires	872.73	960.00
NB: Source Four Luminaire prices include one colour frame & a standard Australian power plug. Lamp & Hook Clamp are not included			

<u>Source Four PAR Luminaire</u>			
ETC06	Source Four PAR Luminaire with Enhanced Aluminium Reflector	313.63	344.99
ETC07	Source Four PAR Luminaire with Metal Cold Mirror (Cool Beam) Reflector	531.82	585.00
ETC08	Source Four PARNEL Luminaire	440.91	485.00
NB: Source Four PAR Luminaire prices include one colour frame & a standard Australian power plug. Lamp & Hook Clamp are not included			

19. MARTIN

<u>MAC SERIES</u>			
MAC01	MAC 250 Krypton c/w lamp	(c/w MSD 250/2 Lamp)	4,817.27 5,299.00
MAC02	MAC 250 Entour c/w lamp	(c/w MSD 250/2 Lamp)	5,726.36 6,299.00
MAC03	MAC 250 Wash c/w lamp	(c/w Lamp)	5,180.91 5,699.00
MAC04	MAC 550 c/w lamp	(c/w HTI 400 W/D3 Lamp)	POA
MAC05	MAC 600 c/w lamp	(c/w HSR/575 Lamp)	8,180.91 8,999.00
MAC06	MAC 700 Profile	(c/w Lamp)	POA
MAC07	MAC 700 Wash	(c/w Lamp)	POA
MAC08	MAC 2000 II (Includes Double Case)	(c/w HMI1200 W/S Lamp)	POA
MAC09	MAC 2000 II Performance (Includes Double Case)	(c/w HMI1200 W/S Lamp)	POA
MAC10	MAC 2000E II (Includes Double Case)	(c/w HMI1200 W/S Lamp)	POA
MAC11	MAC 2000 Wash (Includes Double Case)	(c/w HMI1200 W/S Lamp)	POA

Product Code	Product Description		Trade Ex-GST	Trade Inc-GST
(MARTIN CONT'D)				
<u>MAC SERIES ROADCASES</u>				
MAC12	MAC 250 / 300 Roadcase Holds 2 Units		1,544.55	1,699.01
MAC13	MAC 250 Krypton / Entour Dual Flight Case		1,544.55	1,699.01
MAC14	MAC 500 / 600 Roadcase Holds 2 Units		1,544.55	1,699.01
MAC15	MAC 550 / 700 Dual Flightcase		1,544.55	1,699.01
<u>MARTIN EGO SERIES DISCO EFFECTS</u>				
MAC16	Martin Ego 1	(c/w lamp)	817.27	899.00
MAC18	Martin Ego 3	(c/w lamp)	817.27	899.00
MAC19	Martin Ego 4 DMX	(c/w lamp)	908.18	999.00
MAC17	Martin Ego 5 DMX	(c/w lamp)	908.18	999.00
MAC22	Martin Ego 6 DMX	(c/w lamp)	908.18	999.00
MAC20	Martin Ego Remote Control inc. 5m Cable		71.82	79.00
MAC23	Ego Flight Bag		135.45	149.00
<u>MARTIN FREEKIE</u>				
MAC25	Martin Freekie DMX Controller		908.18	999.00

20. THE GREAT AMERICAN MARKET

<u>GREAT AMERICAN GOBO PATTERNS</u>				
GAM01	Gobo Patterns	(A, B, D, E, G, M, & V Patterns)	30.00	33.00
GAM13	TV Patterns	(Matt 130x130mm,image 89mm)	47.00	51.70
GAM05	Meshtone Patterns	(Matt 101x114mm,image 76mm)	43.00	47.30
<u>BLACKWRAP / BLACKWRAP TAPE</u>				
GAM37	BlackWrap	(50' x 12")	72.00	79.20
GAM03	BlackWrap	(25' x 24")	72.00	79.20
GAM02	Blackwrap Tape	(2in. X 80ft)	70.00	77.00
<u>GAMCOMMAND II</u>				
GAM11	Gam Command II (with LED display)		695.00	764.50
<u>GAMTEST DMX</u>				
GAM44	Gamtest DMX		390.00	429.00
<u>STIK UP</u>				
GAM27	Stick Up Kit: 3 Heads, 3 lamps, Accessories (specifit lamps)		920.00	1,012.00
GAM15	Stick Up Kit in Hardwall Case		1,710.00	1,881.00
GAM16	Stick Up Head (Including Pins & Extension Arms)		238.00	261.80
GAM17	Mounting Block		19.90	21.89
GAM18	Road Case For 3 Heads & Accessories		790.00	869.00
GAM30	JCV 240v x 200w Lamp		70.00	77.00

Product Code	Product Description		Trade Ex-GST	Trade Inc-GST
(THE GREAT AMERICAN MARKET CONT'D)				
<u>TWINSPIN II</u>				
GAM28	TwinSpin Souce IV (Variable Speed)	(Variable Speed 220v)	1,190.00	1,309.00
GAM29	TwinSpin Souce IV (w / line speed control)	(w / control 220v)	1,290.00	1,419.00
GAM04	TwinSpin Souce IV Jr. (Variable Speed)	(Variable Speed 220v)	1,190.00	1,309.00
GAM06	TwinSpin Souce IV Jr. (w / line speed control)	(w / control 220v)	1,290.00	1,419.00
<u>GAMTORCH</u>				
GAM19	Gamtorch (The Torch That Is Self-Extinguishing)	16 gauge steel tubing	538.00	591.80
GAM20	Gamfuel (tray of 14 pellets)		10.00	11.00
GAM21	Gamfuel (Carton of 14 Trays)		119.90	131.89

21. LSC CONSOLES & DIMMERS

<u>MINIM</u>				
LS43	Minim 24 Faders, 36 memory DMX Channel Console		1,250.00	1,375.00
<u>OPTIONS FOR MINIM CONSOLE</u>				
LS38	Minim 19" Rack Mount Kit		90.00	99.00
LS39	Minim External Memory Module		150.00	165.00
<u>MAXIM DMX CHANNEL CONSOLES</u>				
LS12	Maxim - S 24 Faders, 512 DMX Channel Console		1,950.00	2,145.00
LS13	Maxim - S 24 Faders, 512 DMX Channel Console	(c/w video and disk)	2,600.00	2,860.00
LS14	Maxim - M 48 Faders, 512 DMX Channel Console		3,000.00	3,300.00
LS15	Maxim - M 48 Faders, 512 DMX Channel Console	(c/w video and disk)	3,650.00	4,015.00
LS01	Maxim - M 48 Faders, 512 DMX Channel Console	(c/w PATPAD unit)	6,590.00	7,249.00
LS16	Maxim - L 72 Faders, 1024 DMX Channel Console		5,500.00	6,050.00
LS17	Maxim - L 72 Faders, 1024 DMX Channel Console	(c/w PATPAD unit)	8,250.00	9,075.00
LS18	Maxim - XL 96 Faders, 1024 DMX Channel Console		7,000.00	7,700.00
LS19	Maxim - XL 96 Faders, 1024 DMX Channel Console	(c/w PATPAD unit)	9,750.00	10,725.00
LS20	Maxim - XXL 120 Faders, 1024 DMX Channel Console		8,500.00	9,350.00
LS21	Maxim - XXL 120 Faders, 1024 DMX Channel Console	(c/w PATPAD unit)	11,250.00	12,375.00
<u>OPTIONS FOR MAXIM CONSOLE</u>				
LS22	VGA video & 3.5" Disk Drive option for MAX/S & MAX/M consoles		700.00	770.00
LS23	MAXIM PATPAD Moving Light unit (not available for M/S & M/M)		3,250.00	3,575.00
LS25	15" LED Gooseneck Console Light for LSC Control Desks		80.00	88.00

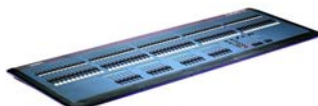
Product Code	Product Description	Trade Ex-GST	Trade Inc-GST
(LSC CONSOLES & DIMMERS CONT'D)			
<u>XTC 1024 DMX CHANNEL CONSOLE</u>			
LS52	Xtc 100 Moving Lights, 1024 DMX Channel Console	4,990.00	5,489.00
<u>OPTIONS FOR XTC</u>			
LS53	Xtc 19" Rack Mount Kit	90.00	99.00
LS54	15" LED Gooseneck Console Light for LSC Control Desks	80.00	88.00
<u>PORTABLE DIMMERS</u>			
<u>ePAK</u>			
LS32	ePAK 12 ch. X 10A, 12 x 3 Pin Aust Connectors, tail & plug incl.	2,600.00	2,860.00
LS06	ePAK 12 ch. X 10A, 2 x 16 Pole Weiland Connectors, tail incl.	2,800.00	3,080.00
LS07	ePAK 12 ch. X 10A, 2 x 19 Pin Socapex Connectors, tail incl.	2,800.00	3,080.00
<u>ePRO</u>			
LS33	ePRO 12 Ch. X 13A, 12 x 3 pin Aust connectors, tail & plug incl.	3,590.00	3,949.00
LS34	ePRO 12 Ch. X 13A, 16 Pole Weiland connectors, tail incl.	3,590.00	3,949.00
LS35	ePRO 12 ch. X 13A, 2 x 19 Pin Socapex Connectors, tail incl.	3,590.00	3,949.00
<u>e1220</u>			
LS02	e1220 12 ch. X 20A, 12 x 3 pin Australian cnnectors, 1P+N MCB'S	4,400.00	4,840.00
LS03	e1220 12 ch. X 20A, 2 x 19 pin Socapex connectors, 1P+N MCB'S	4,400.00	4,840.00
LS04	e1220 12 ch. X 20A, screw terminal i/o connectors, 1P+N MCB'S.	4,400.00	4,840.00
<u>IPAK DIMMER</u>			
LS55	IPAK Dimmer 12ch x 10A, 12 x 3 Pin Aust. Connectors	(No Tail or Plug) 2,600.00	2,860.00
LS56	IPAK Dimmer 12ch x 10A, Screw Terminal Output Connectors	(No Tail or Plug) 2,950.00	3,245.00
<u>IPRO DIMMERS</u>			
LS57	IPRO Dimmer 12ch x 13A, 12 x 3 Pin Australian Connectors	3,590.00	3,949.00
LS58	IPRO Dimmer 6ch x 25A, 12 x 3 Pin Australian Connectors (6 Pairs)	3,590.00	3,949.00
LS59	IPRO Dimmer 12ch x 13A, Screw Terminals for input power	3,590.00	3,949.00
LS60	IPRO Dimmer 12ch x 13A, Screw Terminal o/p conns, 1P+N MCB'S	3,990.00	4,389.00
LS61	IPRO Dimmer 6ch x 25A, Screw Terminals for input power	3,590.00	3,949.00
<u>MONOPAK PORTABLE DIMMER</u>			
LS37	monoPAK 10A Portable Dimmer complete with input & oput leads	520.00	572.00
<u>IPATCH PANEL PANELS</u>			
LS62	iPatch 24 Circuit Patch Panel complete with 10A Test Circuit	1,200.00	1,320.00
LS63	iPatch 30 Circuit Patch Panel complete with 10A Test Circuit	1,350.00	1,485.00
LS64	iPatch 36 Circuit Patch Panel complete with 10A Test Circuit	1,500.00	1,650.00
LS65	iPatch 42 Circuit Patch Panel complete with 10A Test Circuit	1,650.00	1,815.00
LS66	iPatch 48 Circuit Patch Panel complete with 10A Test Circuit	1,800.00	1,980.00
<u>MINI PATCH PANELS</u>			
LS67	miniPATCH 6 Circuit Patch Panel	450.00	495.00
LS68	miniPATCH12 Circuit Patch Panel	550.00	605.00




Product Code	Product Description	Trade Ex-GST	Trade Inc-GST
(LSC CONSOLES & DIMMERS CONT'D)			
<u>W-DMX BLACKBOX</u>			
LS69	Blackbox S-1 Transmitter	1,495.00	1,644.50
LS70	Blackbox R-512 Receiver	895.00	984.50
<u>ROAD CASES</u>			
LS46	Minim - Aluminium Road Case Fully Lined	380.00	418.00
LS39	Xtc - Aluminium Road Case Fully Lined	400.00	440.00
LS40	Maxim S - Aluminium Road Case Fully Lined	400.00	440.00
LS41	Maxim M - Aluminium Road Case Fully Lined	430.00	473.00
LS42	Maxim MP - Aluminium Road Case Fully Lined	520.00	572.00
LS43	Maxim L - Aluminium Road Case Fully Lined	560.00	616.00
LS44	Maxim XL - Aluminium Road Case Fully Lined	640.00	704.00
LS45	Maxim XXL - Aluminium Road Case Fully Lined	720.00	792.00

22. JANDS CONSOLES & DIMMERS

<u>STAGE LIGHTING CONSOLES</u>			
JC18	Stage 12 Channel Lighting Console	950.00	1,045.00
JC19	Stage 24 Channel Lighting Console	1,495.45	1,645.00
JC83	Flightcase for Stage 12 ch Console	887.27	976.00
JC84	Flightcase for Stage 24 ch Console	887.27	976.00
<u>Accessories for Stage Consoles</u>			
JC97	Plug Pak for Stage 12/24 Power Supply PSU	23.00	25.30
<u>ESP 11 LIGHTING CONSOLES</u>			
JC04	ESP II 24 Channel 12 Scene Memory	3,631.82	3,995.00
JC06	ESP II 48 Channel 24 Scene Memory	4,995.45	5,495.00
JC89	Flightcase for ESP II 24 ch Console	869.09	956.00
JC90	Flightcase for ESP II 48 ch Console	1,160.00	1,276.00
<u>EVENT LIGHTING CONSOLES</u>			
JC07	Event 24 Channel Lighting Console	4,631.82	5,095.00
JC92	Flightcase for Event 24 ch Console	987.27	1,086.00
<u>EVENT PLUS LIGHTING CONSOLES</u>			
JC20	Event Plus 48 Channel Lighting Console	7,450.00	8,195.00
JC93	Flightcase for Event Plus 48 ch Console	1,322.73	1,455.00



Product Code	Product Description		Trade Ex-GST	Trade Inc-GST	
(JANDS CONSOLES & DIMMERS CONT'D)					
<u>EVENT 408 MOVING LIGHT CONSOLES</u>					
JC37	Event 408 Lighting Control Console		6,540.91	7,195.00	
JC69	Flightcase for Event 408 Console		1,160.00	1,276.00	
<u>EVENT 416 MOVING LIGHT CONSOLES</u>					
JC38	Event 416 Lighting Control Console		9,268.18	10,195.00	
JC70	Flightcase for Event 416 Console		1,160.00	1,276.00	
<u>HOG MOVING LIGHT CONSOLES</u>					
JC29	Hog 500 Moving Light Console (Controls up to 500 channels)		11,813.64	12,995.00	
JC39	Hog 1000 Moving Light Console (Controls up to 1000 channels)		16,359.09	17,995.00	
JC94	Flightcase for Hog 500		913.64	1,005.00	
JC95	Flightcase for Hog 1000		1,140.91	1,255.00	
<u>VISTA CONSOLES</u>					
JC85	Vista 2 Console		45,863.64	50,450.00	
JC86	Vista 4 Console		58,363.64	64,200.00	
JC87	Flightcase for Vista 2		1,587.27	1,746.00	
JC88	Flightcase for Vista 4		1,950.00	2,145.00	
<u>DIMMERS</u>					
<u>4 PAK II</u>					
JC15	4 PAK II		599.00	658.90	
JC99	Road Case to suit Jands 4 Pak II		70.00	77.00	
<u>FPX PORTABLE DIMMERS</u>					
<u>(All Dimmers are supplied with a 40Amp Plug)</u>					
JC52	FP12-A (JND-FPX-A) Digital Dimmer (Australian)		(12 x 2.4kW - 10A)	2,450.00	2,695.00
JC96	FPX 12 (JND-FP12-H) Digital Dimmer (Hardwired)		(12 x 2.4kW)	2,450.00	2,695.00
<u>FP12 WALL MOUNT DIMMERS</u>					
<u>(All Dimmers are supplied with a 40Amp Plug)</u>					
JC54	FP12 - A (JND-FP12WM-A) Wall Mount Digital Dimmer		(12 x 2.4kW - 10A)	2,722.73	2,995.00
JC55	FP12 - H (JND-FP12WM-H) Wall Mount Digital Dimmer Hardwired		(12 x 2.4kW)	3,222.73	3,545.00
<u>HP12 TR PORTABLE DIMMERS</u>					
<u>(All Dimmers are supplied with a 40Amp Plug)</u>					
JC56	HP12TR - A (JND-HP12TR-A) Digital Dimmer		(12 x 2.4kW - 10 A)	3,904.55	4,295.01

Product Code	Product Description	Trade Ex-GST	Trade Inc-GST	
(JANDS CONSOLES & DIMMERS CONT'D)				
<u>FP12 WM WALL MOUNT DIMMERS</u>				
(All Dimmers are supplied with a 40Amp Plug)				
JC63	FP12 - A (JND-HP12WMTR-A) Wall Mount Digital Dimmer	(12 x 2.4kW - 10A)	2,722.73	2,995.00
JC65	FP12 - H (JND-HP12WMTR-H) Wall Mount Digital Dimmer Hardwired	(12 x 2.4kW)	3,222.73	3,545.00
<u>HP12 SC PORTABLE DIMMERS</u>				
(All Dimmers are supplied with a 40Amp Plug)				
JC66	HP12SC - A (JND-HP12SC-A) Professional Digital Dimmer	(12 x 2.4kW - 10A)	5,450.00	5,995.00
<u>HP 6 C PORTABLE DIMMERS</u>				
(All Dimmers are supplied with a 40Amp Plug)				
JC03	HP 6 C High Performance Digital Dimmer - Australian	(6 x 6kW, 20A Outlets)	4,086.36	4,495.00
<u>DMX 512 DISTRIBUTION</u>				
JC81	JND - DD8 DMX 512 Distribution	 (1 Input, 8 Isolated Outputs)	995.45	1,095.00
JC82	JND - DD6-2 DMX 512 Distributor		(60 Channels)	995.45
<u>POWER DISTRIBUTION SYSTEMS</u>				
JC08	Power Distribution System 12 x 2.4kW; Australian 10A Outlets 12 x 10A Circuit Breaker; 3 Phase 32A Main RCD Breaker LED Indicators; 2m 3 Phase Flexible Supply Cable; 3 Phase Plug; 3RU Jands Code: JND-PDS12R		1,722.73	1,895.00
JC10	Power Distribution System RCD Rack Mount 3RU; 6 x 20Amp cct 12 Outlet with 3 x RCD Jands Code: JND-PDS6R		1,722.73	1,895.00
JC42	Power Distribution System Rack Mount 7RU; 4 x 50Amp 3 x 10 Amp Powerlock in/out Jands Code: JND-PDS453		8,177.27	8,995.00
<u>ROOBARS - EQUIPMENT RACKS</u>				
JC11	Stackable Rollcage: Heavy Duty Steel; Provides Front & Rear Support for 3RU Dimmer, Amplifier etc; Bolt Holes to Facilitate Truss Mounting		213.64	235.00
JC98	Stackable Rollcage: Heavy Duty Steel; Provides Front & Rear Support for 4RU Dimmer, Amplifier etc; Bolt Holes to Facilitate Truss Mounting		213.64	235.00
<u>LITTLITE DESK LIGHTS</u>				
JC12	Littlite 450mm (18") for use in most Jands Lighting Consoles	(Right Angle)	113.64	125.00
JC14	Littlite 450mm (18") for use in most Jands Lighting Consoles	(Straight)	113.64	125.00

Product Code	Product Description	Trade Ex-GST	Trade Inc-GST
--------------	---------------------	--------------	---------------

23. THEATRELIGHT DIMMERS

DIMMERS

THD01	Single Fade Dimmer - 10 Amps total load capacity	400.00	440.00
THD02	Twin Fade Dimmer - 10 Amps total load capacity	485.00	533.50



(19" Rack, or Wall Mount)

DMX-512 SPLITTERS

THD03	4 Way DMX-512 Splitter - Fully Isolated	410.00	451.00
THD04	8 Way DMX-512 Splitter - Flexible XLR Configuration	910.00	1,001.00

24. TAPES

NASHUA GAFFA TAPE

TA01	Nashua 357 Gaffa Tape x 1 Roll	(Blk, White, Silver) 40m x 48mm	18.00	19.80
TA02	Nashua 357 Gaffa Tape x Box 24 Rolls	(Blk, White, Silver) 40m x 48mm	360.00	396.00
TA03	Nashua Gaffa Tape x 1 Roll	(White) 40m x 24mm	9.15	10.07
TA17	Nashua Gaffa Tape x 1 Roll	(Black) 40m x 24mm	9.15	10.07
TA20	Nashua Gaffa Tape x Box 48 Rolls	(Blk, White) 40m x 24mm	430.00	473.00
TA21	Nashua 510 All Weather Matte Gaffa Tape	(Blk) 50mm x 27.5m	20.00	22.00
TA25	Nashua 510 All Weather Matte Gaffa Tape x Box 24 Rolls	(Blk) 50mm x 27.5m	432.00	475.20
TA29	Gaffers Tape (12mm) (non reflective) x 1 Roll	(Blk) 12mm x 35m	8.50	9.35

COLOURED CLOTH TAPE

TA04	Coloured Cloth Tape (25m x 48mm)	(all colours)	9.00	9.90
TA07	Coloured Cloth Tape (25m x 24mm)	(all colours)	5.00	5.50

SILVER TAPE/PVC TAPE

TA08	Silver 3M Polyester Tape	(65m x 12mm)	42.00	46.20
TA16	Silver 3M Polyester Tape	(65m x 25mm)	69.00	75.90
TA05	P.V.C. Tape (Nitto)	(20m x 19mm)	1.91	2.10

HIGH TEMPERATURE TAPE

TA06	Permacel Gel Tape	(66m x 15mm)	16.00	17.60
TA10	Permacel Gel Tape	(66m x 20mm)	20.00	22.00
TA11	Permacel Gel Tape	(66m x 24mm)	25.00	27.50

GLO TAPE

TA09	Rosco Glo Tape	(5m x 25mm)	22.00	24.20
------	----------------	-------------	-------	-------

FLUORESENT CLOTH TAPE

TA26	Pink Fluorescent Cloth Tape 1"	(24mm x 40m)	18.50	20.35
TA27	Yellow Fluorescent Cloth Tape 1"	(24mm x 40m)	18.50	20.35
TA28	Orange Fluorescent Cloth Tape 1"	(24mm x 40m)	18.50	20.35
TA30	Green Fluorescent Cloth Tape 1"	(24mm x 40m)	18.50	20.35

DOUBLESIDED TAPE

TA14	Doublesided Tape 1"	(25m x 24mm)	11.00	12.10
TA15	Doublesided Tape 2"	(25m x 48mm)	20.00	22.00

HAZARD TAPE / PACKING TAPE

TA22	Hazard Tape (Black & Yellow)	(48mm x 33m)	22.00	24.20
TA24	Hazard Tape (Black & Yellow) Cloth Tape	(48mm x 25m)	12.00	13.20

Product Code	Product Description		Trade Ex-GST	Trade Inc-GST
25. FILTERS				
<u>GAMCOLOUR FILTERS</u>				
COLOUR FILTER				
FI01	Gamcolor Filter per Sheet	(24" x 20")	16.00	17.60
FI02	Gamcolor Filter per Roll	(24" x 50')	298.00	327.80
DIFFUSION				
FI13	Gamcolor Diffusion per Sheet	(48" x 20")	20.00	22.00
FI11	Gamcolor Diffusion per Roll	(48" x 25')	258.00	283.80
CINEFILTER				
FI12	Gamcolor Cinefilter per Sheet	(48" x 20")	23.00	25.30
FI14	Gamcolor Cinefilter per Roll	(48" x 25')	290.00	319.00
GAMFUSION				
FI22	Gamfusion Filter per Sheet	(24" x 20")	16.00	17.60
<u>LEE FILTER</u>				
COLOUR EFFECT				
FI03	Lee Colour Filter - (1 to 5 Sheets)	(50cm x 1.22m)	19.00	20.90
FI03	Lee Colour Filter - (6 Sheets & Up)	(50cm x 1.22m)	17.00	18.70
FI04	Lee Colour Filter per Roll	(7.62m x 1.22m)	154.00	169.40
COLOUR CORRECTION				
FI05	Lee Colour Correction Filter - (1 to 5 Sheets)	(50cm x 1.22m)	19.00	20.90
FI05	Lee Colour Correction Filter - (6 Sheets & Up)	(50cm x 1.22m)	17.00	18.70
FI06	Lee Colour Correction Filter Roll	(7.62m x 1.22m)	154.00	169.40
DIFFUSION				
FI07	Lee Diffusion Filter - (1 to 5 Sheets)	(50cm x 1.22m)	19.00	20.90
FI07	Lee Diffusion Filter - (6 Sheets & Up)	(50cm x 1.22m)	17.00	18.70
FI08	Lee Diffusion Filter per Roll	(7.62m x 1.22m)	154.00	169.40
HIGH TEMPERATURE				
FI16	Lee High Temp Filter per Sheet	(46" x 22")	30.00	33.00
FI23	Lee High Temp Filter per Roll	(46" x 13')	150.00	165.00
REFLECTION MEDIA				
FI26	Lee Reflector Sheets (271, 272, 273, 274)	(54" x 43")	40.00	44.00
FI35	Lee Reflector Roll (271, 272, 273, 274)	(1.37m x 6.77m)	174.00	191.40
SCRIM				
FI15	Lee Scrim Sheet (270, 275)	(60" x 43")	54.00	59.40
FI38	Lee Scrim Roll (270, 275)	(22'3" x 60')	248.00	272.80
GRID CLOTH				
FI45	Grid Cloth Roll (430, 432)	(7.62m x 1.37m)	180.00	198.00
FI46	Grid Cloth Sheet (430, 432)	(1.37m x 1.09m)	36.00	39.60
POLARISER				
FI19	Lee Polariser Sheets (239 - Half)	(19" x 19")	192.00	211.20
FI21	Lee Polariser Sheets (239 - Full)	(50" x 19")	486.00	534.60

Product Code	Product Description		Trade Ex-GST	Trade Inc-GST
(FILTERS CONT'D)				
HEAT SHIELD				
FI39	Heatshield per Sheet (269)	(1.22m x 0.51m) (48" x 20")	30.00	33.00
FI30	Heatshield per Roll (269)	(25' x 48") (7.62m x 1.22m)	278.00	305.80
TOUGH SPUN				
FI31	Lee Tough Spun (Non Flame Retardant) (214, 215, 229)	(25' x 36")	88.00	96.80
FI32	Lee Tough Spun (Flame Retardant) (261, 262, 263, 264, 265)	(25' x 48")	120.00	132.00
BLACK FOIL				
FI36	Black Foil (Roll Size 12" x 50')		66.00	72.60
FI37	Black Foil (Roll Size 24" x 25')		66.00	72.60
<u>ROSCO SUPERGEL FILTER</u>				
FI09	Rosco Supergel per sheet	(60cm x 50cm)	16.00	17.60
FI17	Rosco Supergel per roll	(60cm x 7.62m)	155.00	170.50
SHRINK MIRROR				
FI43	Shrink Mirror - (Sold By The Metre)		35.00	38.50
FI44	Shrink Mirror - Full Roll (1.4m x 9.1m)		250.00	275.00
POLARIZING FILTER				
FI10	Rosco Polarizing Sheet	(48cm x 50cm)	105.00	115.50
FI18	Rosco Polarizing Roll	(48cm x 3.04m)	450.00	495.00
HEAT SHIELD				
FI29	Heat Shield per sheet	(60cm x 50cm)	22.00	24.20
FI34	Heat Shield per roll	(60cm x 7.6m)	210.00	231.00
FI33	Heat Shield per roll	(120cm x 7.6m)	364.00	400.40
CINEFOIL / BLACKWRAP				
FI42	Rosco Cinefoil / Blackwrap (30cm x 3m)		25.00	27.50
FI40	Rosco Cinefoil / Blackwrap (30cm x 15.25m)		68.00	74.80
<u>SWATCHBOOKS / CHINAGRAPHS</u>				
FI25	Rosco Swatchbook		4.55	5.01
FI20	Rosco Designer Colour Selector		35.00	38.50
FI27	Lee Swatch Book		4.00	4.40
FI24	Lee Filter Master Swatch Book		295.00	324.50
FI28	Gam Swatch Book		4.00	4.40
FI41	Chinagraph Pencils (White only)		3.00	3.30

26. CONTROL CABLES & CONNECTORS

CCC07	Canon 14 Pin Inline Plug		97.00	106.70
CCC08	Canon 14 Pin Inline Socket		137.95	151.75
CCC09	16 Core Flexible Multicore per Metre	(0616, 0.25mm)	6.75	7.43
CCC10	Socapex 37 Pin Male Line Connector		82.00	90.20
CCC11	Socapex 37 Pin Female Line Connector		92.00	101.20
CCC12	Socapex 37 Pin Male Chassis Connector		87.00	95.70
CCC13	Socapex 37 Pin Female Chassis Connector		61.00	67.10

Product Code	Product Description	Trade Ex-GST	Trade Inc-GST
(CONTROL CABLES & CONNECTORS CONT'D)			
CCC16	Belden Data Cable (8102) per Metre - (DMX)	3.90	4.29
CCC17	Mic Cable per Metre (Canare Cable)	1.80	1.98
CCC18	Amphenol 3 Pin Inline Plug	4.65	5.12
CCC19	Amphenol 3 Pin Inline Socket	6.00	6.60
CCC20	Amphenol 4 Pin Inline Plug	6.30	6.93
CCC21	Amphenol 4 Pin Inline Socket	8.00	8.80
CCC14	Amphenol 5 Pin Inline Plug	10.25	11.28
CCC15	Amphenol 5 Pin Inline Socket	12.00	13.20
CCC22	Neutrik DMX 3 to 5 Pin Male	25.00	27.50
CCC23	Neutrik DMX 5 to 3 Pin Male	25.00	27.50

27. POWER CABLES & CONNECTORS

PCC01	Silicon Cable per metre	(3 X 1.00mm ²)	4.50	4.95
PCC02	Black Flex per metre	(3 X 1.00mm ²)	2.15	2.37
PCC03	Black Flex per metre	(3 X 1.50mm ²)	2.75	3.03
PCC04	Clipsal 439/110	(Male 110V)	8.50	9.35
PCC05	Clipsal 438/110	(Female 110V)	13.50	14.85
PCC06	Clipsal 439	(Male 240V)	3.90	4.29
PCC07	Clipsal 438	(Female 240V)	7.20	7.92
PCC08	Clipsal 463AS	(Plug Adap. 240V)	8.35	9.19
PCC09	Clipsal Plug 56P532	(32 AMP, 3 Phase)	92.00	101.20
PCC10	Clipsal Socket 56CSC532	(32 AMP, 3 Phase)	160.00	176.00
PCC11	Socapex 19 Pin Male Line Connector		80.00	88.00
PCC12	Socapex 19 Pin Female Line Connector		80.00	88.00
PCC13	Socapex 19 Pin Male Chassis Connector		69.00	75.90
PCC14	Socapex 19 Pin Female Chassis Connector		50.00	55.00
PCC23	Socapex 7 Pin Male Line		53.00	58.30
PCC24	Socapex 7 Pin Female Line		70.00	77.00
PCC25	Socapex 7 Pin Male Chassis		61.00	67.10
PCC26	Socapex 7 Pin Female Chassis		35.00	38.50
PCC15	Camlok J Series Male Line Connector		40.50	44.55
PCC16	Camlok J Series Female Line Connector		40.50	44.55
PCC17	Camlok J Series Male Chassis Connector		44.00	48.40
PCC18	Camlok J Series Female Chassis Connector		44.00	48.40
PCC19	Black Flex per metre (NBR / NBR)	(5 X 6.00mm ²)	9.50	10.45
PCC21	Black Flex per metre (NBR / NBR)	(7 X 1.50mm ²)	3.85	4.24
PCC20	Black Flex per metre (NBR / NBR)	(18 X 1.50mm ²)	9.00	9.90
PCC30	Black Rubber Flex per metre (EPR / CPE)	(5 X 6.00mm ²)	10.60	11.66
PCC22	Figure 8 Flex per metre	(2 X 0.75mm ²)	0.90	0.99
PCC27	Y Splitter for Par 64		34.00	37.40

28. 240V EXTENSION LEADS

EXTENSION LEADS 240V

EL01	1m Black 240v Extension Lead c/w Moulded Plug & Socket	(15amp, 3 Pin Ext, 240v Cable)	7.20	7.92
EL02	2m Black 240v Extension Lead c/w Moulded Plug & Socket	(15amp, 3 Pin Ext, 240v Cable)	8.20	9.02
EL03	3m Black 240v Extension Lead c/w Moulded Plug & Socket	(15amp, 3 Pin Ext, 240v Cable)	10.00	11.00
EL04	5m Black 240v Extension Lead c/w Moulded Plug & Socket	(15amp, 3 Pin Ext, 240v Cable)	13.60	14.96
EL05	10m Black 240v Extension Lead c/w Moulded Plug & Socket	(15amp, 3 Pin Ext, 240v Cable)	21.65	23.82
EL06	15m Black 240v Extension Lead c/w Moulded Plug & Socket	(15amp, 3 Pin Ext, 240v Cable)	26.80	29.48
EL07	20m Black 240v Extension Lead c/w Moulded Plug & Socket	(15amp, 3 Pin Ext, 240v Cable)	33.80	37.18
EL17	30m Black 240v Extension Lead c/w Moulded Plug & Socket	(15amp, 3 Pin Ext, 240v Cable)	44.00	48.40

Product Code	Product Description	Trade Ex-GST	Trade Inc-GST
29. 110V EXTENSION LEADS			
<u>EXTENSION LEADS 110V</u>			
EL09	1m Black 110v Extension Lead	27.00	29.70
EL10	2m Black 110v Extension Lead	30.00	33.00
EL11	3m Black 110v Extension Lead	33.00	36.30
EL12	5m Black 110v Extension Lead	40.00	44.00
EL13	10m Black 110v Extension Lead	49.00	53.90
EL14	15m Black 110v Extension Lead	61.00	67.10
EL15	20m Black 110v Extension Lead	73.00	80.30
EL16	30m Black 110v Extension Lead	98.00	107.80
<u>IEC SOCKET EXTENSION</u>			
EL08	3m IEC Socket (10amp, Black)	8.60	9.46

30. SOCAPEX EXTENSION CABLES

SOX01	10m Socapex Extension Cable 6 Way - 240v	439.00	482.90
SOX02	20m Socapex Extension Cable 6 Way - 240v	494.00	543.40
SOX03	30m Socapex Extension Cable 6 Way - 240v	550.00	605.00
SOX04	40m Socapex Extension Cable 6 Way - 240v	605.00	665.50
SOX05	50m Socapex Extension Cable 6 Way - 240v	662.00	728.20
HEADERS & TAILS			
SOX06	Socapex Header 1m	268.00	294.80
SOX07	Socapex Tail 1m	265.00	291.50

31. WEILAND MULTICORES

<u>4 & 5 WAY WEILAND MULTICORES</u>			
<i>(Made with NBR/NBR)</i>			
WEL01	5m Weiland Type Multicores 4/5 Way - 240v	162.73	179.00
WEL02	10m Weiland Type Multicores 4/5 Way - 240v	192.73	212.00
WEL03	15m Weiland Type Multicores 4/5 Way - 240v	226.36	249.00
WEL04	20m Weiland Type Multicores 4/5 Way - 240v	257.27	283.00
WEL05	25m Weiland Type Multicores 4/5 Way - 240v	290.91	320.00
WEL06	30m Weiland Type Multicores 4/5 Way - 240v	321.82	354.00
WEL07	40m Weiland Type Multicores 4/5 Way - 240v	387.27	426.00

MOTOR LOOMS
coming soon....

Product Code	Product Description	Trade Ex-GST	Trade Inc-GST
(WEILAND MULTICORES CONT'D)			
<u>6 WAY WEILAND MULTICORES</u>			
<u>(Made with NBR/NBR)</u>			
WEL15	5m Weiland Type Multicores 6 Way - 240v	199.09	219.00
WEL16	10m Weiland Type Multicores 6 Way - 240v	255.45	281.00
WEL17	15m Weiland Type Multicores 6 Way - 240v	321.82	354.00
WEL18	20m Weiland Type Multicores 6 Way - 240v	386.36	425.00
WEL19	25m Weiland Type Multicores 6 Way - 240v	452.73	498.00
WEL20	30m Weiland Type Multicores 6 Way - 240v	518.18	570.00
WEL21	40m Weiland Type Multicores 6 Way - 240v	649.09	714.00
<u>WEILAND HEADER (BAR END)</u>			
WEL22	4 Way Weiland Header (Bar End)	177.27	195.00
WEL23	5 Way Weiland Header (Bar End)	190.00	209.00
WEL24	6 Way Weiland Header (Bar End)	216.36	238.00
<u>WEILAND TAIL (RACK END)</u>			
WEL25	4 Way Weiland Tail (Rack End)	155.45	155.00
WEL26	5 Way Weiland Tail (Rack End)	169.09	186.00
WEL27	6 Way Weiland Tail (Rack End)	192.73	212.00

32. 3 PHASE 32 AMP NBR EXTENSION CABLE

PHA01	3m 3 Phase 32amp Extension Cable (NBR / NBR)	329.00	361.90
PHA02	5m 3 Phase 32amp Extension Cable (NBR / NBR)	347.00	381.70
PHA03	10m 3 Phase 32 amp Extension Cable (NBR / NBR)	392.00	431.20
PHA04	15m 3 Phase 32 amp Extension Cable (NBR / NBR)	437.00	480.70
PHA05	20m 3 Phase 32 amp Extension Cable (NBR / NBR)	482.00	530.20
PHA06	25m 3 Phase 32 amp Extension Cable (NBR / NBR)	527.00	579.70
PHA07	30m 3 Phase 32 amp Extension Cable (NBR / NBR)	572.00	629.20
PHA08	40m 3 Phase 32 amp Extension Cable (NBR / NBR)	662.00	728.20
PHA09	50m 3 Phase 32 amp Extension Cable (NBR / NBR)	752.00	827.20

33. 3 PHASE 32 AMP RUBBER EXTENSION CABLE

PHA10	3m 3 Phase 32amp Extension Cable (RUBBER)	335.00	368.50
PHA11	5m 3 Phase 32amp Extension Cable (RUBBER)	357.00	392.70
PHA12	10m 3 Phase 32 amp Extension Cable (RUBBER)	412.00	453.20
PHA13	15m 3 Phase 32 amp Extension Cable (RUBBER)	467.00	513.70
PHA14	20m 3 Phase 32 amp Extension Cable (RUBBER)	522.00	574.20
PHA15	25m 3 Phase 32 amp Extension Cable (RUBBER)	577.00	634.70
PHA16	30m 3 Phase 32 amp Extension Cable (RUBBER)	632.00	695.20
PHA17	40m 3 Phase 32 amp Extension Cable (RUBBER)	742.00	816.20
PHA18	50m 3 Phase 32 amp Extension Cable (RUBBER)	852.00	937.20

Product Code	Product Description		Trade Ex-GST	Trade Inc-GST
34. DMX EXTENSION CABLES				
DMX01	1m DMX Extension Cable (Made with Beldon 8102 Cable)	(5 x Pin)	50.91	56.00
DMX02	3m DMX Extension Cable (Made with Beldon 8102 Cable)	(5 x Pin)	57.27	63.00
DMX03	10m DMX Extension Cable (Made with Beldon 8102 Cable)	(5 x Pin)	80.91	89.00
DMX04	15m DMX Extension Cable (Made with Beldon 8102 Cable)	(5 x Pin)	97.27	107.00
DMX05	20m DMX Extension Cable (Made with Beldon 8102 Cable)	(5 x Pin)	113.64	125.00
DMX06	30m DMX Extension Cable (Made with Beldon 8102 Cable)	(5 x Pin)	147.27	162.00
DMX07	40m DMX Extension Cable (Made with Beldon 8102 Cable)	(5 x Pin)	180.00	198.00
DMX08	50m DMX Extension Cable (Made with Beldon 8102 Cable)	(5 x Pin)	213.64	235.00
DMX09	60m DMX Extension Cable (Made with Beldon 8102 Cable)	(5 x Pin)	247.27	272.00

35. LAMPS

All lamps are listed in alphabetical order.

LA91	A1/216 - (G6.35) - Projection Lamp / Philips 7158XHP	(24v x 150w)	7.00	7.70
LA116	A1/231 Long Life EFP-LL 500 Hours		23.00	25.30
LA46	A1/233 - DYR (GY9.5)	(240V X 650W)	17.00	18.70
LA09	A1/244 - Raylight (GY9.5) 75 Hours	(240V X 500W)	20.00	22.00
LA96	Blacklight Blue (BC)	(240V X 75W)	9.00	9.90
LA101	Blacklight / Mercury Lamp 400w GES	(400W)	153.00	168.30
LA02	Blue Pinch BP1000 (Selecon Pacific)	(1000W)	48.00	52.80
LA31	BA9s 64111 (Desk Lamp)	(12V X 5W)	6.00	6.60
LA35	CID - (Pat 765) - 99-0222	(1000W)	260.00	286.00
LA67	CP23 / CP67- GX9.5	(240V X 650W)	46.55	51.21
LA29	CP40 / CP71 - 1K Fresnel (G22)	(240V X 1000W)	42.00	46.20
LA32	CP41 / CP73 - 2K Fresnel (G38) (Pat 293 Followspot)	(240V X 2000W)	57.00	62.70
LA36	CP43 / CP72 - 2K Fresnel (GY16)	(240V X 2000W)	56.00	61.60
LA40	CP61 - Par 64 NSP 300 hours	(240V X 1000W)	52.00	57.20
LA56	CP60 - Par 64 VNSP 300 Hours	(240V X 1000W)	52.00	57.20
LA57	CP62 - Par 64 MFL 300 Hours	(240V X 1000W)	52.00	57.20
LA130	CP91 - 2.5K (G22) (Selecon Performer)	(240V X 2500W)	80.00	88.00
LA131	CP92 - 2K	(240V X 2000W)	93.00	102.30
LA58	CP110 - 1.2K 6980Z (Selecon Pacific 82V) 300Hours	(80V x 1200W)	84.50	92.95
LA102	CP85 - 5K	(240v x 5000w)	143.00	157.30
LA112	Coloured Décor BC (Available in Blue or Red)	(240v x 40w)	2.50	2.75
LA71	Dataflash - HO1 (Dataflash / AF1000)		270.00	297.00
LA07	DWE - (Mole Fay) 100 Hours	(120V X 650W)	36.00	39.60
LA21	DXX - (Redhead)	(240V X 800W)	15.00	16.50
LA123	DDL - (GX5.3)	(20V X 150W)	13.00	14.30
LA133	EFP / 5H Philips 6834 (Disco Lamp)	(12V X 100W)	12.50	13.75
LA107	EFR - A1/232	(15V X 150W)	13.00	14.30
LA34	EHJ - 64657 Osram 300hrs (Trackspot / Solar 250)	(24V X 250W)	7.50	8.25
LA14	ES - (Pat 137)	(240V X 200W)	5.50	6.05
LA73	ELC (Osram) (GX5.3) 500 Hours "NEW"	(24V X 250W)	22.00	24.20

Product Code	Product Description		Trade Ex-GST	Trade Inc-GST
(LAMPS CONT'D)				
LA61	FEX - (Blondie)	(240V X 2000W)	48.50	53.35
LA12	FEP CP/77 - (G9.5) (Leko) 300 Hours	(240V X 1000W)	36.00	39.60
LA74	GKV 600w (Selcon Pacific)	(600w)	36.00	39.60
LA77	GES Clear 500w (Stand Patt 60)	(240V X 500W)	25.00	27.50
LA125	GES Clear 300w	(240V X 300W)	7.00	7.70
LA124	GU10 (MR16 240v) - 40Deg / 60Deg (Par 16 240v Version)	(240V X 50W)	9.00	9.90
LA50	H7604 - VNSP (Sealed Beam)	(12.8V X 50W)	31.20	34.32
LA08	HTI - 150 Single Ended (Osram) 750 Hours - (Mini Mac Profile)	(150w)	149.50	164.45
LA83	HTI - 300 DX (Clay/P Mini Scan HPE) 750 Hours	(300w)	210.00	231.00
LA98	HTI - 300 DEL (C/P Mini Scan HPE) 3000 Hours	(300w)	253.50	278.85
LA30	HTI-403W/24 - (Lyclan / PC)	(400W)	403.00	443.30
LA103	HTI - 400 W/D3 - (MAC 550)		260.00	286.00
LA134	HTI - 700/D4/75 - (Martin MAC 700)		253.00	278.30
LA69	Halogen HI - (Beacons)	(12V X 55W)	7.00	7.70
LA78	HMI 575W/GS Double Ended (Clay Paky Golden Scan) 750 Hours		221.00	243.10
LA100	HMI 575W/SE Single Ended (Osram) 750 hours		280.00	308.00
LA90	HMI 1200W/S Double Ended (Osram) (MAC 2000) 750 Hours	(1200W)	312.00	343.20
LA89	HPL 750 (ETC Source Four) (400 Hour)		39.00	42.90
LA104	HPL 575 (ETC Source Four) (400 Hour)		39.00	42.90
LA92	HLX 64610 BRL (Osram) 50 Hour	(12V X 50W)	6.00	6.60
LA93	HLX 64623 Longlife (Osram) 2000 Hour	(12V X 100W)	7.00	7.70
LA26	HLX 64640 (Osram) 50 Hour	(24V X 150W)	5.00	5.50
LA94	HLX 64655 (Osram) 50 Hour	(24V X 250W)	5.00	5.50
LA132	HLX 64657 (Osram) 300 Hour	(24V X 250W)	7.00	7.70
LA79	HSD 200/60 (Osram) (Martin Roboscan 518) 2000 Hours		149.50	164.45
LA13	HSD 250/60 - 2000 Hours (MAC 250, Vary Scan Special / Plus)		143.00	157.30
LA105	HSD 250/80 - 3000 Hours (MAC 250, Vary Scan Special / Plus)		143.00	157.30
LA122	HSD 250/UL - 6000 Hours "NEW" (MAC 250, Vary Scan Special / Plus)		162.00	178.20
LA108	HSR 575W/72 (Martin Mac 600) (1000 Hour)		254.00	279.40
LA117	HQI-T 150W (Abstract VR8)		34.00	37.40
LA118	K11 QI 200W (Selecon Hul / Lul)		6.00	6.60
LA119	K9 QI 300W (Selecon Hul / Lul)		6.00	6.60
LA120	K1 QI 500W (Selecon Hul / Lul)		6.00	6.60
LA109	K4 QI 1000 (Selecon Hul / Lul)	(240V X 1000W)	7.00	7.70
LA62	M/38 - GY9.5 2000 Hours	(240V X 300W)	26.00	28.60
LA84	MSR 575/2 (Mac 500 / 600) 750 Hours		253.00	278.30
LA52	MSR-700 - (Intellabeam 700) 1000 Hours	(700W)	295.00	324.50
LA63	MSR-1200/2 - (Cyberlight / Performer Followspot)	(1200W)	348.00	382.80
LA85	MSD 250 -2 (Philips) (Mac 250, Technobeam) 2000 Hours		195.00	214.50
LA80	MSD 200 (Philips)		185.00	203.50
LA23	MR 16/Halogen	(12V X 20W)	9.00	9.90
LA24	MR 16/Halogen	(12V X 50W)	8.00	8.80
LA42	MR 16/Halogen	(12V X 65W)	8.00	8.80
LA64	MR 16/Halogen	(12V X 75W)	8.00	8.80
LA87	MR 16 Coloured (Red, Blue, Yellow, Green)	(12V X 50W)	10.00	11.00

Product Code	Product Description		Trade Ex-GST	Trade Inc-GST
(LAMPS CONT'D)				
LA97	Par 46 - Halogen (Spot/Flood)	(240V X 100W)	16.60	18.26
LA10	Par 56 - WFL/MFL/NSP	(240V X 300W)	24.00	26.40
	PAR 64 120V VERSION			
LA11	Par 64 - WFL/MFL/NSP 4000 Hours	(120V X 1000W)	52.00	57.20
LA27	Par 64 (GE) - FFN - VNSP	(120V X 1000W)	62.00	68.20
	PAR 64 240V VERSION			
LA40	Par 64 CP/61 - NSP 300 hours	(240V X 1000W)	52.00	57.20
LA56	Par 64 CP/60 - VNSP 300 Hours	(240V X 1000W)	52.00	57.20
LA57	Par 64 CP/62 - MFL 300 Hours	(240V X 1000W)	52.00	57.20
LA106	Par 64 (GE) - EXG WFL 300 Hours	(240V X 1000W)	60.00	66.00
LA88	Par 38 (Spot/Flood)	(240V X 150W)	5.00	5.50
LA65	Par 30 - Halogen (Spot/Flood) 2500 Hours	(240V X 100W)	15.00	16.50
LA76	Par 20 - Halogen (Spot/Flood) 2500 Hours	(240V X 50W)	15.00	16.50
LA15	P2/7 - Cyc Unit 1000w	(240V X 1000W)	15.00	16.50
LA114	P2/12 - Cyc Unit 1250w	(240V X 1250W)	15.00	16.50
LA38	P2/20 - Cyc Unit 1000w	(240V X 1000W)	15.00	16.50
LA115	P2/11 - Cyc Unit 800w (Selecon Hul Cyc Unit)	(240V X 800W)	15.00	16.50
LA44	Ql 150 - Cyc Unit	(240V X 150W)	6.00	6.60
LA43	Ql 200 - Cyc Unit	(240V X 200W)	6.00	6.60
LA59	Ql 300 - Cyc Unit	(240V X 300W)	6.00	6.60
LA16	Ql 500 - Cyc Unit	(240V X 500W)	6.00	6.60
LA72	R7S 1500w	(240V X 1500W)	13.00	14.30
LA70	R50 - Gooseneck Lamp	(240V X 40W)	5.00	5.50
LA68	Reflector - 6423 (Roboscan)	(15V X 150W)	14.00	15.40
LA22	TLD - U.V. Tube 4ft (36W / 08)	36W	21.00	23.10
LA75	TLD - U.V. Tube 2ft (18W / 08)	18W	21.00	23.10
LA01	T/1 - (P28S) (Patt 23)	(240V X 500W)	45.00	49.50
LA03	T/11, T/19 - (GX9.5) (Patt 743, Selecon 1200) 750 Hours	(240V X 1000W)	35.70	39.27
LA28	T/14, T/20 - (P28S) (Patt 223 / 263)	(240V X 1000W)	50.00	55.00
LA48	T/15, T/23 - (P28S)	(240V X 1000W)	65.00	71.50
LA82	T/21 - GX9.5	(240V X 650W)	38.00	41.80
LA53	T/22, T/13 - (P28S)	(240V X 650W)	42.00	46.20
LA55	T24/T17 - (P28S)	(240V X 500W)	37.00	40.70
LA20	T/25, T/18 - Minutte (GY9.5)	(240V X 500W)	26.00	28.60
LA04	T/26, T/27 - Minutte (GY9.5) (Selecon Acclaim) 400 Hours	(240V X 650W)	27.00	29.70
LA33	T/29 - (GX9.5) (Cantata, Selecon 1200 Range) 400 Hours	(240V X 1200W)	38.00	41.80
LA18	4405 (GE) - Par 36	(12.8 X 30W)	11.00	12.10
LA05	4515 (GE) - (Par 36 Pinspot)	(6V X 30W)	6.40	7.04
LA17	4535 (GE) - Par 46	(6V X 30W)	20.00	22.00
LA19	4553 (GE) - Par 46 ACL	(28V X 250W)	26.00	28.60
LA06	4552 (GE) - Par 64 ACL	(28V X 250W)	52.00	57.20
LA37	4596 (GE) - Par 36 ACL	(28V X 250W)	33.00	36.30
LA81	4545 (GE) 100 Hours	(12V X 100W)	48.00	52.80
LA110	64514 - Osram 120v x 300w	(120v x 300W)	16.00	17.60
LA111	64515 - Osram 240v x 300w	(240v x 300W)	16.00	17.60

Product Code	Product Description		Trade Ex-GST	Trade Inc-GST
36. LAMP BASES & FUSES				
<u>LAMP BASES</u>				
LB08	GX9.5 Lamp Base	(GX9.5)	49.00	53.90
LB01	Leko Lamp Base	(G9.5)	45.00	49.50
LB06	Minulette Lamp Base	(GY9.5)	36.00	39.60
LB10	Acclaim Fresnel Lamp Base	(GY9.5)	36.00	39.60
LB18	Blue Pinch Lamp Base (Suits Selecon Pacific 1K)		40.00	44.00
LB09	Par 64 Ceramic Terminal Block		7.00	7.70
LB17	Par 16 Lamp Base (MR16)		7.50	8.25

<u>FUSES & FADERS</u>				
LB07	Jands Fuse	(10 Amp, 32 X 6.5mm)	2.00	2.20
LB04	LSC Fuse	(10 Amp, 23 X 5mm)	2.00	2.20
LB05	Strand Fuse	(10 Amp, 26 X 6.5mm)	2.00	2.20
LB02	Fuse Holder for Jands 4 Pack		15.00	16.50
LB13	Fuse Holder to suit Jands Road Pak (12 Channel Dimmer)		22.00	24.20
LB15	Fader for Jands 4 Pak		15.00	16.50
LB16	Fader for Jands Event Console		12.00	13.20

37. SMOKE / HAZE / DIFFUSION FLUID

CLS FOG FLUID FOR F100

<u>Stage Formula</u>				
FF19	Stage Formula 1 Litre (suitable for F100 & all smoke machines)	(1 Litre Container)	11.00	12.10
FF20	Stage Formula 5 Litre (suitable for F100 & all smoke machines)	(5 Litre Container)	27.50	30.25
FF21	Stage Formula 25 Litre (suitable for F100 & all smoke machines)	(25 Litre Container)	137.50	151.25

<u>Cold Flow Formula</u>				
FF22	Cold Flow Formula 1 Litre	(1 Litre Container)	12.00	13.20
FF23	Cold Flow Formula 5 Litre	(5 Litre Container)	42.00	46.20
FF24	Cold Flow Formula 25 Litre	(25 Litre Container)	181.50	199.65

<u>HQ Heavy Formula</u>				
FF25	HQ Heavy Formula 1 Litre	(1 Litre Container)	12.00	13.20
FF26	HQ Heavy Formula 5 Litre	(5 Litre Container)	42.00	46.20
FF27	HQ Heavy Formula 25 Litre	(25 Litre Container)	181.50	199.65

<u>CLS UNIQUE HEAVY FOG FLUID</u>				
FF41	Unique Heavy Fog Fluid - 25 Litre (suitable for Unique Hazer)	(25 Litre Container)	181.50	199.65
FF43	Unique Heavy Fog Fluid - 5 Litre (suitable for Unique Hazer)	(5 Litre Container)	49.50	54.45

<u>CLS MAJOR SMOKE</u>				
FF45	Major Smoke 1 Litre - (Economical fluid for all smoke machines)	(1 Litre Container)	11.00	12.10
FF01	Major Smoke 5 Litre - (Economical fluid for all smoke machines)	(5 Litre Container)	27.50	30.25
FF02	Major Smoke 25 Litre - (Economical fluid for all smoke machines)	(25 Litre Container)	137.50	151.25

Product Code	Product Description		Trade Ex-GST	Trade Inc-GST
(SMOKE / HAZE / DIFFUSION FLUID CONTD)				
<u>CLS HAZE FLUID</u>				
FF16	Regular Haze Fluid 1 Litre	(1 Litre Container)	12.00	13.20
FF18	Regular Haze Fluid 5 Litre	(5 Litre Container)	38.50	42.35
FF08	Regular Haze Fluid 25 Litre	(25 Litre Container)	165.00	181.50
<u>CLS STAR FLUID FOR STAR HAZER</u>				
FF32	Star Fluid 1 Litre - (Suitable for Le Maitre Star Hazer)	(1 Litre Container)	16.50	18.15
FF33	Star Fluid 5 Litre - (Suitable for Le Maitre Star Hazer)	(5 Litre Container)	55.00	60.50
FF40	Star Fluid 25 Litre - (Suitable for Le Maitre Star Hazer)	(25 Litre Container)	220.00	220.00
<u>CLS DIFFUSION FLUID FOR DF50</u>				
FF09	CLS Diffusion Fluid 1 Litre	(1 Litre Container)	20.00	22.00
FF04	CLS Diffusion Fluid 5 Litre	(5 Litre Container)	80.00	88.00
FF30	CLS Diffusion Fluid 25 Litre	(25 Litre Container)	300.00	330.00
<u>FLOW TAPS</u>				
FF03	Flow Tap to suit 25 Litre Containers		3.00	3.30
<u>ROSCO FOG FLUID</u>				
FF06	Rosco Fog Fluid	(1 Litre Container)	18.50	20.35
FF07	Rosco Fog Fluid	(4 Litre Container)	60.00	66.00
<u>LOOK POWER TINY FLUID</u>				
FF15	Look Power Tiny Fluid (250ml) Bottle	(250ml Bottle)	45.45	50.00
<u>BUBBLE FLUID</u>				
FF44	Super Bubble Fluid - 4 Litre Container	(4 Litre Container)	45.45	50.00

38. SMOKE / HAZE MACHINES

<u>JEM FOG MACHINES</u>				
SM38	Jem Magnum 550 Fogger		299.00	328.90
SM40	Jem Magnum 800 / Techno Fog		453.64	499.00
SM41	Jem ZR-12 AL Power Fogger		817.27	899.00
SM44	Jem ZR12 DMX Power Fogger		908.18	999.00
SM43	Jem ZR-33 Hi Mass Fogger		1,544.55	1,699.01
SM42	Jem ZR-12 / Technofog DMX Remote Control / Interface		271.82	299.00
<u>JEM HAZE MACHINES</u>				
SM02	Magnum Hazer		1,362.73	1,499.00
SM54	Jem Digital Remote For Magnum		271.82	299.00
<u>ROBE SMOKE & HAZE MACHINES</u>				
SM49	Robe Fog 1500FT		878.93	966.82
SM50	Robe Haze 400FT		1,278.36	1,406.20
SM51	Robe Faze 1000FT		1,037.87	1,141.66

Product Code	Product Description	Trade Ex-GST	Trade Inc-GST
(SMOKE / HAZE MACHINES CONT'D)			
<u>LOOK UNIQUE HAZER 2</u>			
SM04	Look Unique Hazer 2 - (The Unique offers the ultimate in atmosphere control)	3,635.45	3,999.00
SM55	Flight Case for Unique Hazer	726.36	799.00
<u>LOOK POWER TINY FOGGER</u>			
SM03	Power Tiny Fogger	2,726.36	2,999.00
SM05	Roadcase to Suit Power Tiny	200.00	220.00
<u>KUPO FOGMATE</u>			
SM47	Fogmate (Rechargeable Battery Powered Smoke Machine)	726.36	799.00
<u>BUBBLE MACHINE</u>			
SM53	Super Bubble Machine - c/w Metal Chassis	200.00	220.00
<u>DF50 DIFFUSION FOGGER</u>			
SM17	DF50 Diffusion Fogger	6,000.00	6,600.00

39. ROSCO PRODUCTS

<u>METAL GOBOS</u>			
RP02	Rosco Metal Gobos (All Standard Sizes)	(A, B & M Size)	35.00 38.50
RP03	Rosco Metal Gobos for brand-name moving lights	(Clay Paky, Martin etc.)	40.00 44.00
RP04	Rosco Mesh Metal Gobos	(A & B Sizes only)	45.00 49.50
<u>COLORIZER PATTERNS</u>			
RP05	Stripped Series B Size Glass Gobo		115.00 126.50
RP09	Featherlight Series B Size Glass Gobo		115.00 126.50
RP10	Free Flow Series B Size Glass Gobo		115.00 126.50
RP11	Colour Wave Patterns - B Size Glass Dichroic		145.00 159.50
RP12	Colour Wave Patterns - Moving Light Size		115.00 126.50
<u>SIGNATURE SERIES - GLASS <i>Moving Light Size</i></u>			
RP13	Black & White		110.00 121.00
RP14	Two Colour		200.00 220.00
RP15	Multi Colour		370.00 407.00
<u>SPECIAL EFFECTS PATTERNS</u>			
RP16	Image Glass B Size		65.00 71.50
RP17	Prismatics B Size		120.00 132.00
<u>GLO TAPE (GLOWS IN THE DARK)</u>			
TA09	Glo Tape (25mm x 5m)		22.00 24.20
<u>FLUORESCENT PAINT</u>			
RP08	Available in White, Red, Orange, Yellow, Green, Blue, Invisible Blue, Pink, Gold (0.95 Litre Cont.)		50.00 55.00

Product Code	Product Description		Trade Ex-GST	Trade Inc-GST
(ROSCO PRODUCTS CONT'D)				
<u>SUPERSATURATED PAINT</u>				
RP37	Supersaturated Starter Kit - one of each colour 30ml Pots	(30ml Pots)	50.00	55.00
RP38	Supersaturated (Refer to Rosco Catalogue for Colours Available)	(0.95 Litre Container)	49.00	53.90
RP18	White Concentrate 3.8 Litre	(3.8 Litre Container)	73.00	80.30
RP19	White Concentrate 19 Litre	(19 Litre Container)	250.00	275.00
RP20	Black Velour Concentrate 0.95 Litre	(0.95 Litre Container)	45.00	49.50
RP21	Black Velour Concentrate 3.8 Litre	(3.8 Litre Container)	73.00	80.30
<u>VIVID FX FLUORESCENT PAINT</u>				
RP39	Vivid FX Starter Kit (one of each colour) (60ml Pots)	(13 Colours in 60ml Pots)	55.00	60.50
RP07	(Refer to Rosco Catalogue for Colours Available in .478 Litre Containers)		37.00	40.70
RP06	(Refer to Rosco Catalogue for Colours Available in .95 Litre Containers)		58.00	63.80
<u>COLOURINE</u>				
RP01	Rosco Colorine (8 Colours, Clear & Thinner available)	(0.47 Litre Container)	40.00	44.00
<u>FLAMEX FLAME RETARDANTS</u>				
RP22	Roscoflamex C26 3.8 Litres - Cottons		80.00	88.00
RP23	Roscoflamex S33 3.8 Litres - Synthetics		80.00	88.00
RP24	Roscoflamex W40 3.8 Litres - Wood		80.00	88.00
RP25	Roscoflamex P50 - Paint Additive		32.00	35.20
<u>VIDEO PAINTS</u>				
RP26	TV White 3.8 Litre		53.00	58.30
RP27	TV Black 3.8 Litre		53.00	58.30
RP28	DigiComp Blue 3.8 Litre		120.00	132.00
RP29	DigiComp Green 3.8 Litre		145.00	159.50
RP30	DigiComp Red 3.8 Litre		170.00	187.00
<u>CLEARCOLOUR - INVISIBLE UV PAINTS</u>				
RP33	Clearcolour Starter Kit (5 Colours in 60ml Pots)		120.00	132.00
RP31	Clearcolour - 0.47L (Yellow, Green, Red, Blue, Black)		130.00	143.00
RP32	Clearcolour - 0.95L (Yellow, Green, Red, Blue, Black)		240.00	264.00
<u>VORTEX GOBO ROTATORS</u>				
RP40	Vortex Double Gobo Rotator - complete with controller for ETC Source Four, Shakespeare, Selecon Pacific & Strand SL		700.00	770.00

40. LIGHTING TOOLS

<u>LED WORK TORCHES</u>				
LT01	LED Torch (DAT 3L Super Bright) LED Torch		14.00	15.40
LT02	LED Torch (DAT 1X Super Bright) Xenon Torch		20.00	22.00
LT03	LED Head Torch (8 x LED)		25.00	27.50
<u>RIGGING GLOVES</u>				
LT04	Rigging Gloves (Cow Hide)		7.27	8.00
<u>PODGER</u>				
LT05	Podger 19/24mm		72.00	79.20