

ELEMENT BOX TRUSS 400MM CENTRES

PART No. TR208

PARTS LIST

Chords	50 x 3mm CHS
Cross Braces	50 x 3mm CHS
End Sleeves	57.2 x 75 x 3.6 CHS
Webs	19 x 3mm CHS
End Joining Braces	32 x 32 x 6mm SHS

Note:

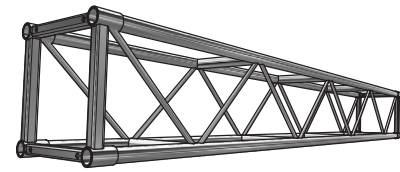
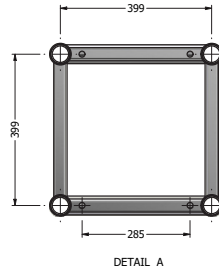
1. All tubes from Aluminium Alloy 6061 T6
2. Weld Material 5356

JOINING KIT

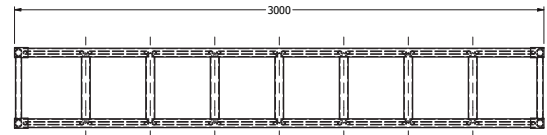
- 4 x Alloy Truss Pin 230 x 43 x 3mm CHS
- 4 x High Tensile Machine Bolt 4" x 1/2" UNC Plated Grade 8.8
- 8 x Washers High Tensile 26 x 13.8 x 3mm Grade F436
- 4 x Zinc Plated 1/2" UNC Wingnut

Note:

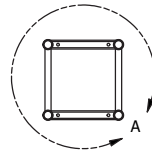
1. Pin from Aluminium Alloy 6061 T6
2. Thread should be kept lubricated
3. Spring Washer or Nyloc Nut should be used if truss is subject to vibration



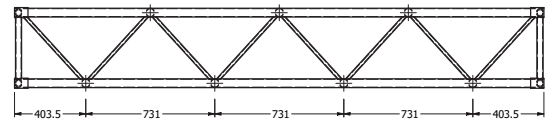
PERSPECTIVE VIEW



TOP VIEW



END VIEW



FRONT VIEW

ALLOWABLE LOADING

SPAN m	UDL kg/m	DEFLECTION mm	MAXIMUM ALLOWABLE POINT LOADS				SPAN total weight
			CPL kgs	DEFLECTION mm	TPL kgs	QPL kgs	
3 (no join)	836	2	2061	3	1546	1030	28.5
3 (with join)	836	2	2061	3	1546	1030	30
4	768	6	1537	5	1152	768	39.5
5	488	9	1219	7	914	610	55.5
6	388	13	1017	10	754	503	58.5
7	244	18	852	14	639	426	69.5
8	184	23	736	19	552	367	79
9	143	29	643	24	482	322	88.5
10	114	36	568	30	426	284	99.5
11	92	44	507	36	379	253	109
12	72	52	454	43	340	226	118.5
13	63	61	412	50	310	206	129.5
14	53	71	360	59	280	187	139
15	44	81	339	68	254	169	148.5

LOAD TABLE GUIDELINES

- *Loading figures are only valid for static loads.
- *Loading figures are only valid for single spans with supports at both ends.
- *All static systems, other than single spans, need an individual structural calculation. Please contact a structural engineer or call CLSA for further assistance.
- *Loading figures are calculated according to and in full compliance with Australian Standards.
- *The self-weight of the trusses is already taken into account
- *Loading figures are only valid for the cross sectional orientation of the truss as shown by the icon in the loading table.
- *The interaction between bending moment and shear force at the connection point is already taken into account.
- *Truss spans can be assembled from different truss lengths.
- *CLSA recommends a 15% deduction on allowable loadings for repetitive use truss.