

Box Truss 200MM CENTRES

PART No. TR243

PARTS LIST

Chords	50 x 3mm CHS
Cross Braces	19 x 3mm CHS
End Sleeves	57.2 x 75 x 3.6 CHS
Webs	19 x 3mm CHS
End Joining Braces	32 x 32 x 6mm SHS

Note:

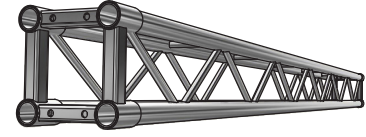
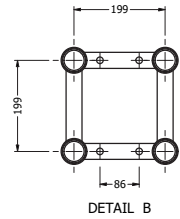
- All tubes from Aluminium Alloy 6061 T6
- Weld Material 5356

JOINING KIT

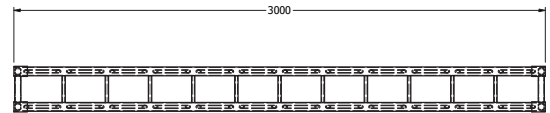
- 4 x Alloy Truss Pin 230 x 43 x 3mm CHS
- 4 x High Tensile Machine Bolt 4" x 1/2" UNC Plated Grade 8.8
- 8 x Washers High Tensile 26 x 13.8 x 3mm Grade F436
- 4 x Zinc Plated 1/2" UNC Wingnut

Note:

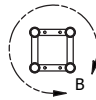
- Pin from Aluminium Alloy 6061 T6
- Thread should be kept lubricated
- Spring Washer or Nyloc Nut should be used if truss is subject to vibration



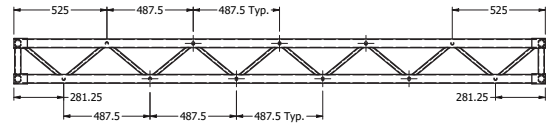
PERSPECTIVE VIEW



TOP VIEW



END VIEW



FRONT VIEW

ALLOWABLE LOADING

SPAN m	Uniformly Distributed Load		Centre Point Load		Single Load Third Points Load per Point	Single Load Forth Points Load per Point	SPAN total weight
	UDL kg/m	DEFLECTION mm	CPL kgs	DEFLECTION mm	TPL kgs	QPL kgs	
3 (no join)	683	6	1025	5	768	512	20
3 (with join)	683	6	1025	5	768	512	21.5
4	381	11	762	9	572	381	28
5	241	17	603	14	453	302	35
6	165	24	496	20	372	248	41.5
7	120	33	419	27	314	209	50
8	90	43	360	35	270	180	56.5
9	70	55	313	45	234	157	63
10	55	68	275	56	206	138	70
11	44	82	243	68	182	122	78
12	36	81	216	90	162	108	84.5

LOAD TABLE GUIDELINES

- *Loading figures are only valid for static loads.
- *Loading figures are only valid for single spans with supports at both ends.
- *All static systems, other than single spans, need an individual structural calculation. Please contact a structural engineer or call CLSA for further assistance.
- *Loading figures are calculated according to and in full compliance with Australian Standards.
- *The self-weight of the trusses is already taken into account
- *Loading figures are only valid for the cross sectional orientation of the truss as shown by the icon in the loading table.
- *The interaction between bending moment and shear force at the connection point is already taken into account.
- *Truss spans can be assembled from different truss lengths.
- *CLSA recommends a 15% deduction on allowable loadings for repetitive use truss.