

ELEMENT BOX TRUSS 300MM CENTRES

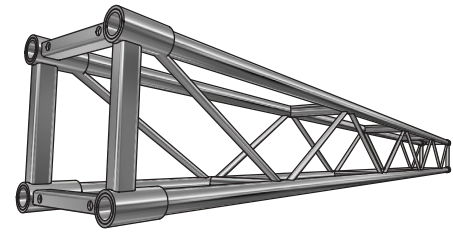
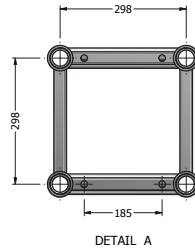
PART No. TR258

PARTS LIST

Chords	50 x 3mm CHS
Cross Braces	50 x 3mm CHS
End Sleeves	57.2 x 75 x 3.6 CHS
Webs	19 x 3mm CHS
End Joining Braces	32 x 32 x 6mm SHS

Note:

- All tubes from Aluminium Alloy 6061 T6
- Weld Material 5356



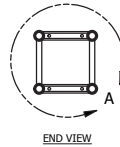
PERSPECTIVE VIEW

JOINING KIT

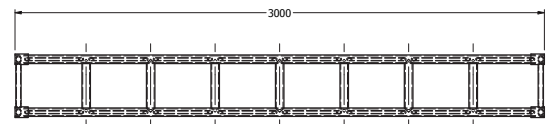
- 4 x Alloy Truss Pin 230 x 43 x 3mm CHS
- 4 x High Tensile Machine Bolt 4" x 1/2" UNC Plated Grade 8.8
- 8 x Washers High Tensile 26 x 13.8 x 3mm Grade F436
- 4 x Zinc Plated 1/2" UNC Wingnut

Note:

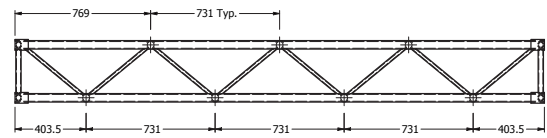
- Pin from Aluminium Alloy 6061 T6
- Thread should be kept lubricated
- Spring Washer or Nylon Nut should be used if truss is subject to vibration



END VIEW



TOP VIEW



FRONT VIEW

ALLOWABLE LOADING

SPAN m	UDL kg/m	DEFLECTION mm	MAXIMUM ALLOWABLE POINT LOADS				SPAN total weight
			CPL kgs	DEFLECTION mm	TPL kgs	QPL kgs	
3 (no join)	836	4	1538	4	1154	769	22
3 (with join)	836	4	1538	4	1154	769	23.5
4	573	8	1147	7	860	573	31
5	364	12	910	10	682	455	38
6	250	17	759	14	563	375	45.5
7	182	24	636	19	477	318	54
8	137	31	549	25	412	274	62
9	107	39	480	32	360	240	69
10	85	48	424	39	318	212	78
11	69	58	378	48	283	189	85
12	56	69	339	57	254	169	92.5

LOAD TABLE GUIDELINES

- *Loading figures are only valid for static loads.
- *Loading figures are only valid for single spans with supports at both ends.
- *All static systems, other than single spans, need an individual structural calculation. Please contact a structural engineer or call CLSA for further assistance.
- *Loading figures are calculated according to and in full compliance with Australian Standards.
- *The self-weight of the trusses is already taken into account
- *Loading figures are only valid for the cross sectional orientation of the truss as shown by the icon in the loading table.
- *The interaction between bending moment and shear force at the connection point is already taken into account.
- *Truss spans can be assembled from different truss lengths.
- *CLSA recommends a 15% deduction on allowable loadings for repetitive use truss.